

HOS MPSV FLEET

LIFE-OF-FIELD SUPPORT

Vessel Specifications and Equipment

Overview



MULTI-PURPOSE SUPPORT VESSELS

SALES@HORNBECKOFFSHORE.COM
WWW.HORNBECKOFFSHORE.COM

The highly innovative HOSMPSV™ Fleet provides marine solutions to meet the evolving needs of the deep water energy industry with a range of service capabilities from petroleum and chemical tankers to subsea intervention and operations support.

The accommodation fleet offers a wide range of offshore housing solutions, including “walk-to-work” features and many other amenities.

INDEX

VESSEL	PAGE #
HOS 250 & 265 (100 t Crane)	
HOS Mystique	6
HOS Ridgewind	7
HOS 310 (150 t crane)	
HOS Bayou	8
HOS 310ES (250 t crane)	
HOS Warland	9
HOS Woodland	10
HOS 400ES (250 t crane)	
HOS Warhorse	11
HOS Wild Horse	12
HOS 430 (400 t crane)	
HOS Iron Horse	13
HOS 370	
HOS Centerline	14
HOS Strongline	15
HOS FLOTEL (130 - 267 berths)	
HOS Briarwood (100 t crane).....	16
HOS Riverbend (35 t crane)	17
HOS Achiever (160 t crane).....	18

OFFSHORE HOSPITALITY

ONE SIZE DOES NOT FIT ALL

HOS RIVERBEND
194 BERTHS

HOS BRIARWOOD
130 BERTHS

HOS ACHIEVER
267 BERTHS

HOS IRON HORSE
245 BERTHS

OILFIELD ARMADA

WORLD'S LARGEST JONES ACT COMPLIANT MPSV FLEET

HOS MYSTIQUE &
HOS RIDGEWIND
100 t

HOS IRON HORSE
400 t

HOS BAYOU
150 t

HOS WARLAND & HOS WOODLAND
250 t

HOS WARHORSE & HOS WILD HORSE
250 t / 100 t



HOS MYSTIQUE

HOSMPSV 250 Class

Year built	2008	Potable water	30,850 gal (120 m ³)
Flag	United States	Rig fuel	145,900 gal (550 m ³)
Length	250 ft (76.2 m)	Rig water	321,980 gal (1,220 m ³)
Certifications	Oceans-SOLAS, USCG Subchapter I and L, SIP	FiFi monitors	1 x 3,000 gpm (680 m ³ /hr)
Classifications	ABS, ⚡DPS-2, ⚡A1, ACC, ⚡AMS, Loadline, OSV	Offshore crane	100 MT w/AHC, 35 m hook height, personnel lift rated 7.5 MT
Main engines	5,586 bhp	Deck crane	13 MT
Generators	Primary: 1,020 kW Auxiliary: 1,000 kW Deck: 1,250 kW	ROV	1 x 150 hp work class
Bow thrusters	2 x CPP tunnel (1,900 hp)	Hydro-acoustic	HIPAP 500 w/ deployment system
Stern thruster	1 x CPP tunnel (950 hp)	Transducer well	22 in diameter
Propellers	CPP, high efficiency 4-Blade	Roll damping	Anti-roll tank (active ballast), bilge keels
Rudder	Independent steering, fishtail	Berthing	57 people Gym, lounge, locker room
Deadweight	2,330 LT (2,370 MT)		
Deck area	5,130 ft ² (480 m ²) Rated: 5 MT/m ²		
Deck cargo	1,100 LT (1,120 MT)		
Dry bulk	6,240 ft ³ (180 m ³)		



HOS RIDGEWIND

HOSMEX 265 Class

Year built	2001	Deck area	5,430 ft ² (500 m ²) Rated: 5 MT/m ²
Flag	Mexico	Deck cargo	1,950 LT (1,980 MT)
Length	260 ft (79.2 m)	Liquid mud	9,410 bbl (1,500 m ³)
Certifications	Oceans-SOLAS	Brine	9,410 bbl (1,500 m ³)
Classifications	ABS, ⚡DPS-2, ⚡A1, ⚡AMS, ACC, Loadline, OSV, OSR-C2	Recovered Oil (>60° C FP)	9,410 bbl (1,500 m ³)
Main engines	6,780 hp	Potable water	20,530 gal (80 m ³)
Generators	Shaft: 4,000 kW Primary: 640 kW Auxiliary: 1,000 kW Deck: 2,500 kW	Watermaker	8,000 gpd (30 m ³ /day)
Bow thrusters	1 x CPP azimuth drop-down (1,200 hp) 1 x CPP tunnel (1,200 hp)	Rig fuel	144,580 gal (550 m ³)
Stern thrusters	2 x CPP tunnel (1,200 hp)	Rig water	395,260 gal (1,500 m ³)
Propellers	CPP, high-efficiency, 4-blade	Berthing	80 people Locker room, conference room, offices
Rudder	Independent steering, fishtail	Offshore crane	100 MT w/AHC, 2,000 m wire, 35 m hook height
Deadweight	3,070 LT 3,120 MT	Deck crane	18 MT
		ROV	1 x 200 hp work class



HOS BAYOU

HOSMPSV 310 Class

Year built	2014	Methanol	1,960 bbl (310 m ³)
Flag	United States	Potable water	62,550 gal (240 m ³)
Length	302 ft (92 m)	Watermaker	4,000 gpd (15 m ³ /day)
Certifications	Oceans-SOLAS, USCG Subchapter I and L	Rig fuel	268,280 gal (1,020 m ³)
Classifications	ABS, ✱DPS-2, ✱A1, ACP, ✱ACCU, ✱AMS, CRC, (E), FFV-I, HELIDK, Loadline, OSV, UWILD, OSR-C2	Rig water	519,160 gal (1,970 m ³)
Main generators	Main: 7,300 kW Auxiliary: 1,880 kW	FiFi monitors	2 x 5,280 gpd (2 x 1,200 m ³ /hr)
Main propulsion	2 x azimuth z-drives (6,700 hp)	Berthing	70 people Client offices, conference room, theater, hospital
Bow thrusters	2 x FPP tunnel (3,160 hp)	Helideck	Sikorsky S-61N / S-92N
Deadweight	5,190 LT (5,270 MT)	Offshore crane	150 MT w/ AHC, 2,900 m wire, 38 m hook height, personnel lift rated 7.5 MT
Deck area	7,595 ft ² (705.6 m ²) Rated: 5 MT/m ²	Deck crane	13 MT, personnel lift rated 0.6 MT
Deck cargo	2,075 LT (2,108 MT)	ROV	2 x 150 hp work class
Dry bulk	14,350 ft ³ (406 m ³)	DP reference	1 x HiPAP 500
Liquid mud	20,990 bbl (3,340 m ³)	Fast rescue craft	1 x 15 persons
		Roll reduction	Anti-roll tank



HOS WARLAND

HOSMPSV 310ES Class

Year built	2016	Watermaker	8,000 gpd (30 m ³ /day)
Flag	United States	Rig fuel	474,310 gal (1,800 m ³)
Length	302 ft (92.05 m)	Rig water:	619,320 gal (2,340 m ³)
Certifications	Oceans-SOLAS, USCG Subchapter I and L	FiFi monitors:	2 x 5,280 gpd (2 x 1,200 m ³ /hr)
Classifications	ABS, ✱DPS-2, ✱A1, ACP, ✱ACCU, ACP, ✱AMS, CRC, (E), ENVIRO, FFV-I, IHM, HELIDK, Loadline, SPS, OSV (HLC, HNLS, HDC), UWILD, OSR-C2	Total berthing:	85 people Hospital, 20 office stations, conference room, gym, cargo elevator
Main generators	9,000 kW	Helideck	Sikorsky S-61N / S-92N Helicopter restart capability
Main propulsion	2 x azimuth z-drives (6,700 hp)	Offshore crane	250 MT w/AHC, AT, 3,700 m wire, 42 m hook height, personnel lift rated 11 MT
Bow thrusters	1 x azimuth swing-down (1,180 hp) 2 x FPP tunnel (2,360 hp)	Deck crane	13 MT, personnel lift rated 0.6 MT
Stern thruster	1 x FPP tunnel (1,180 hp)	Tuggers	2 x 12 MT
Deadweight	5,130 LT (5,220 MT)	ROV	2 x 150 hp work class w/ ROV control room and workshop
Deck area	10,300 ft ² (957 m ²) Rated: 10 MT/m ²	DP reference	1 x HiPAP 500
Deck cargo	1,930 LT (1,960 MT)	Fast rescue craft	1 x 15 people
Liquid mud	19,120 bbl (3,040 m ³)	Moon pool	15 x 18 ft (4.6 x 5.5 m) w/ hatch
Methanol	1,730 bbl (270 m ³)		
Potable water	171,350 gal (650 m ³)		



HOS WOODLAND

HOSMPSV 310ES Class

Year built	2016	Potable water	171,350 gal (650 m ³)
Flag	United States	Watermaker	8,000 gpd (30 m ³ /day)
Length	302 ft (92.05 m)	Rig fuel	474,310 gal (1,800 m ³)
Certifications	Oceans-SOLAS, USCG Subchapter I and L	Rig water:	619,320 gal (2,340 m ³)
Classifications	ABS, ✱DPS-2, ✱A1, ACP, ✱ACCU, ACP, ✱AMS, CRC, (E), ENVIRO, FFV-I, IHM, HELIDK, Loadline, SPS, OSV (HLC, HNLS, HDC), UWILD, OSR-C2	FiFi monitors:	2 x 5,280 gpd (2 x 1,200 m ³ /hr)
Main generators	9,000 kW	Total berthing:	85 people Hospital, office stations (20), conference room, gym, cargo elevator
Main propulsion	2 x azimuth z-drives (6,700 hp)	Helideck	Sikorsky S-61N / S-92N
Bow thrusters	1 x azimuth swing-down (1,180 hp) 2 x FPP tunnel (2,360 hp)	Offshore crane	250 MT w/AHC, AT, 3,700 m wire, 42 m hook height, personnel lift rated 11 MT
Stern thruster	1 x FPP tunnel (1,180 hp)	Deck crane	13 MT, personnel lift rated 0.6 MT
Deadweight	5,130 LT (5,220 MT)	Tuggers	2 x 12 MT
Deck area	10,300 ft ² (957 m ²) Rated: 10 MT/m ²	ROV	2 x 150 hp work class w/ ROV control room and workshop
Deck cargo	1,930 LT (1,960 MT)	DP reference	1 x HiPAP 500
Liquid mud	19,120 bbl (3,040 m ³)	Fast rescue craft	1 x 15 people
Methanol	1,730 bbl (270 m ³)	Moon pool	15 x 18 ft (4.6 x 5.5 m) w/ hatch

HOS WARHORSE

HOSMPSV 400ES Class

Year built	TBD	Potable water	178,310 gal (680 m ³)
Flag	United States	Watermaker	8,000 gpd (30 m ³ /day)
Length	362 ft (110.34 m)	Rig fuel	561,310 gal (2,130 m ³)
Certifications	Oceans-SOLAS, USCG Subchapter I and L	Rig water	766,230 gal (2,900 m ³)
Classifications	ABS, ✱DPS-2, ✱A1, ACP, ✱ACCU, ✱AMS, CRC, GP, (E), ENVIRO, FFV-I, SPS, HELIDK, Loadline, RRDA, UWILD, OSV (HLC, HDC, HNLS)	FiFi monitors:	2 x 5,280 gpd (2 x 1,200 m ³ /hr)
Generators	Main: 9,000 kW Auxiliary: 3,450 kW	Berthing	102 people Client offices, 25 office stations, conference room/cinema, gym
Main propulsion	2 x azimuth z-drives (6,705 hp)	Helideck	Sikorsky S-61N / S-92N
Bow thrusters	1 x azimuth drop-down (1,180 hp) 2 x FPP tunnel (2,360 hp)	Offshore crane 1	250 MT w/AHC, AT, 3,700 m wire, 42 m hook height
Stern thruster	1 x FPP tunnel (1,180 hp)	Offshore crane 2	100 MT w/ AHC, 2,000 m wire
Deadweight	6,270 LT (6,370 MT)	Deck crane	13 MT, personnel lift rated 0.6 MT
Deck area	13,600 ft ² (1,260 m ²) Rated: 10 MT/m ²	Tuggers	2 x 12 MT
Deck cargo	2,750 LT (2,790 MT)	ROV	2 x 250 hp work class w/ ROV control room & workshop
Liquid mud	11,320 bbl (1,800 m ³)	DP reference	1 x HiPAP 500
Flammable	4,890 bbl (780 m ³)	Fast rescue craft	1 x 15 Person(s)
		Moon pool	15 x 18 ft (4.6 x 5.5 m)



HOS WILD HORSE

HOSMPSV 400ES Class

Year built	TBD	Flammable	4,890 bbl (780 m ³)
Flag	United States	Potable water	178,310 gal (680 m ³)
Length	362 ft (110.34 m)	Watermaker	8,000 gpd (30 m ³ /day)
Certifications	Oceans-SOLAS, USCG Sbcphtr I and L	Rig fuel	561,310 gal (2,130 m ³)
Classifications	ABS, ✕DPS-2, ✕A1, ACP, ✕ACCU, ✕AMS, CRC, GP, (E), ENVIRO, FFV-I, SPS, HELIDK, Loadline, RRDA, UWILD, OSV (HLC, HDC, HNLS)	Rig water	766,230 gal (2,900 m ³)
Generators	Main: 9,000 kW Auxiliary: 3,450 kW	FiFi monitors:	2 x 5,280 gpd (2 x 1,200 m ³ /hr)
Main propulsion	2 x azimuth z-drives (6,705 hp)	Berthing	102 people Client offices, 25 office stations, conference room/cinema, gym
Bow thrusters	1 x azimuth drop-down (1,180 hp) 2 x FPP tunnel (2,360 hp)	Helideck	Sikorsky S-61N / S-92N Helicopter restart capability
Stern thruster	1 x FPP tunnel (1,180 hp)	Offshore crane	250 MT w/AHC, AT, 3,700 m wire, 42 m hook height
Deadweight	6,570 LT (6,670 MT)	Deck crane	13 MT, personnel lift rated 0.6 MT
Deck area	13,700 ft ² (1,270 m ²) Rated: 10 MT/m ²	Tuggers	2 x 12 MT
Deck cargo	2,750 LT (2,790 MT)	ROV	2 x 250 hp work class w/ control room & workshop
Liquid mud	11,320 bbl (1,800 m ³)	DP reference	1 x HiPAP 500
		Moon pool	15 x 18 ft (4.6 x 5.5 m)



HOS IRON HORSE

HOSMPSV 430 Class

Year built	2009	Berthing	245 people Client offices, operations room, conference room, gym, locker room, 2 theaters, 2 recreational rooms, hospital
Flag	Mexico	Helideck	Sikorsky S-61N
Length	432 ft 1 in (131.7 m)	Offshore crane 1	400 MT w/AHC, 3,000 m wire, 42 m hook height, personnel lift rated 2 MT
Certifications	Oceans-SOLAS	Offshore crane 2	120 MT w/AHC, 1,550 m fast wire, personnel lift rated 1.5 MT
Classifications	ABS, ✕DPS-3, ✕A1, OSV, ✕ACCU, ✕AMS, HELIDK, HDC 10 t/m ² , Loadline	Roll damping	Active and passive
Main generators	11,536 kW	Fast rescue craft	1 x 15 people
Main propulsion	2 x CPP steerable azimuth (8,050 hp)	Moon pool	25.5 x 24.5 ft (7.8 x 7.5 m)
Bow thrusters	2 x CPP tunnel (3,600 hp) 1 x CPP azimuth drop-down (1,600 hp)		
Deadweight:	5,910 LT (6,000 MT)		
Deck Area:	8,130 ft ² (760 m ²) Rated: 10 MT/m ²		
Ballast water:	875,000 gal (3,310 m ³)		
Potable water:	137,450 gal (520 m ³)		
Watermaker:	28,000 gpd (110 m ³ /day)		
Ship's fuel:	352,340 gal (1,330 m ³)		



HOS CENTERLINE

HOSMPSV 370 Class

Year built	1992 / 2008	Deck area	11,600 ft ² (1,077.6 m ²) Rated: 5 MT/m ²
Flag	United States	Deck cargo	4,700 LT (4,780 MT)
Length	381 ft (116.1 m)	Brine	30,960 bbl (4,920 m ³)
Certifications	Oceans-SOLAS, USCG Subchapter I/L and D/O, OSRV	Cargo oil (D/O)	24,550 bbl (3,900 m ³)
Classifications	ABS, ✕DPS-2, ✕A1, ✕AMS, ACP, ACC, CRC, (E), ESP, Loadline, Oil Carrier/Chemical Carrier/OSV, UWILD	Fresh water	64,980 gal (250 m ³)
Main engines	8,000 kW	Liquid mud	30,960 bbl (4,920 m ³)
Main generators	1,275 kW	Rig fuel (I/L)	1,523,510 gal (5,770 m ³)
Main propulsion	2 x FPP steerable (6,000 hp)	Rig water	1,352,820 gal (5,120 m ³)
Bow thrusters	2 x CPP azimuth drop-down (3,000 hp) 1 x CPP Tunnel (1,500 hp)	Berthing	47 people (capable of installing additional deck berthing for 31 people) Client office, lounge
Stern thruster	1 x CPP Tunnel (1,500 hp)	Roll damping:	Anti-roll tank, passive
Deadweight	7,900 LT 8,030 MT	Deck cranes	3 x 20 MT
		Watermaker	9,000 gpd (30 m ³ /day)



HOS STRONGLINE

HOSFLEX 370 Class

Year built	1992 / 2008	Deck area	8,880 ft ² (830 m ²) Rated: 5 MT/m ²
Flag	United States	Deck cargo	4,700 LT (4,780 MT)
Length	381 ft (116.1 m)	Dry bulk	6,240 ft ³ (177 m ³)
Certifications	Oceans-SOLAS, USCG Subchapter I/L and D/O	Brine	30,960 bbl (4,920 m ³)
Classifications	ABS, ✕A1, ✕ACC, (E), ✕AMS, CRC, ✕DPS-2, ESP, FFV 1-NS, UWILD Loadline, OSR-C1, Oil/Chemical Carrier/OSV	Cargo oil (D/O) (<60 °C FP)	24,550 bbl (3,900 m ³)
Main engines	8,000 kW	Fresh water	64,980 gal (250 m ³)
Main generators	1,275 kW	Liquid mud	30,960 bbl (4,920 m ³)
Main propulsion	2 x FPP Steerable (6,000 hp)	Rig fuel (I/L)	1,523,510 gal (5,770 m ³)
Bow thrusters	2 x CPP Azimuth Drop-down (3,000 hp) 1 x CPP Tunnel (1,500 hp)	Rig water	1,352,820 gal (5,120 m ³)
Stern thruster	1 x CPP Tunnel (1,500 hp)	Berthing	52 people (capable of installing additional deck berthing for 56 people) Client office, lounge
Deadweight	7,870 LT (8,000 MT)	Roll damping	Anti-Roll Tank, Passive
		Deck cranes	3 x 20 MT
		Watermaker	5,000 gpd (20 m ³ /day)
		FiFi monitors	2 x 5,280 gpm (2 x 1,200 m ³ /hr)



HOS BRIARWOOD

HOSMAX 310EQH Class

Year built	2015	Potable Water:	62,549 gal 237 m ³
Flag	Unites States	Watermaker:	16,000 gpd (60 m ³ /day)
Length	302 ft (92 m)	Rig fue	268,280 gal (1,020 m ³)
Certifications	Oceans-SOLAS, USCG Subchapter I, and L	Rig water	528,040 gal (2,000 m ³)
Classifications	ABS, ✕DPS-2, ✕A1, ✕ACCU, ACP, ✕AMS, CRC, (E), ENVIRO, FFV-I, GP, HELIDK, Loadline, OSV, OSR-C2, UWILD	FiFi monitors	2 x 5,280 gpm (2 x 1,200 m ³ /hr)
Main engines	7,300 kW	Berthing	130 people 9 office stations, 2 galleys, 2 mess halls, 2 laundry rooms, gym, theater, 800 ft ² indoor smoking lounge/game room, hospital
Main propulsion	2 x azimuth z-drives (6,700 hp)	Helideck	Sikorsky S-92 Restart capability & luggage conveyor
Bow thrusters	2 x FPP tunnel (3,160 hp)	Offshore crane	100 MT w/ AHC, 2,000 m wire, 35 m hook height
Deadweight	5,233 LT (5,318 MT)	Deck crane	13 MT, personnel rated 0.6 MT
Deck area	5,596 ft ² (520 m ²) Rated: 5 MT/m ²	Liquid mud mixing	Hydraulic paddle agitators
Deck cargo	1,850 LT (1,880 MT)	Fast rescue craft	1 x 15 people
Dry bulk	14,350 ft ³ (406 m ³)	ROV:	1 x 150 hp work class
Liquid mud	21,417 bbl (3,405 m ³)		
Methanol	2,212 bbl (352 m ³)		
Recovered oil (<60° C FP)	2,212 bbl (352 m ³)		
Recovered oil (>60° C FP)	21,417 bbl (3,405 m ³)		



HOS RIVERBEND

HOSMPSV Flotel Class

Year built	2014	Rig water:	498,520 gal (1,880 m ³)
Flag	United States	FiFi monitors	2 x 5,280 gpm (2 x 1,200 m ³ /hr)
Length	292 ft (89 m)	Berthing	194 people Client offices w/ conference room, fitness center, men & women's locker/wash rooms, 2 theaters, recreational room, 800 ft ² indoor smoking lounge, hospital
Certifications	Oceans-SOLAS, USCG Subchapter I and L	Helideck	Sikorsky S-92 (12.6 MT) Luggage conveyor & helicopter restart capability
Classifications	ABS, ✕DPS-2, ✕A1, ACP, ✕ACCU, ✕AMS, CRC, (E), ENVIRO, GP, OSV, FFV-1, HELIDK, Loadline, UWILD	Offshore crane	35 MT, personnel rated 3.75 MT
Main engines	7,300 kW	Deck crane	13 MT, personnel rated 0.6 MT
Main propulsion	2 x azimuth z-drives (6,700 hp)	Offshore gangway	Active-motioncompensated Operating length 19.4 m / ±4 m Operating angle +20° / -15°
Bow thrusters	2 x FPP tunnel (3,160 hp)	Fast rescue craft	1 x 15 people
Deadweight	3,470 LT (3,520 MT)		
Dry bulk	8,200 ft ³ (230 m ³)		
Liquid mud / ballast	16,940 bbl (2,690 m ³)		
Potable water	139,560 gal (530 m ³)		
Watermaker	22,000 gpd (80 m ³ /day)		
Rig fuel	220,168 gal (833 m ³)		



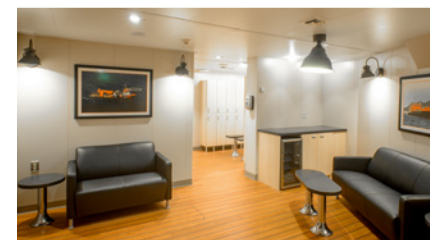
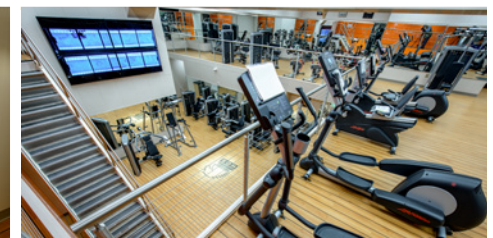
HOS ACHIEVER

HOSMPSV Flotel Class

Year built	2008
Flag	Vanuatu
Length	432 ft 1 in (131.7 m)
Certification	Oceans-SOLAS
Classification	ABS, ⚡DPS-3, ⚡A1, ⚡ACCU, ⚡AMS, HELIDK, HDC 10 t/m ² , Loadline
Generators	Main: 11,500 kW Auxiliary: 3,600 kW
Main propulsion	2 x FPP steerable azimuth (8,050 hp)
Bow thrusters	2 x CPP tunnel (3,600 hp) 1 x CPP drop-down azimuth (1,600 hp)
Deadweight	5,100 LT (5,180 MT)
Ballast water	859,250 gal (3,250 m ³)
Potable water	145,440 gal (550 m ³)
Watermaker	35,140 gpd (130 m ³ /day)
Ship's fuel	318,910 gal (1,207 m ³)

Berthing	267 people 4,000 ft ² fitness center 800 ft ² indoor smoking lounge 2 theaters 2 recreational rooms 3 conference rooms Client offices Men & women's locker/wash rooms Deck changing room Internet cafe Hospital
Helideck	Sikorsky S-92 (12 MT) Re-fueling and restart
Offshore crane	160 MT, personnel rated 5 MT
Offshore gangway	Active-motion compensated Operating length 19.4 m / ±4 m Operating angle +20° / -15°
Roll damping	Active and passive
Fast rescue craft	1 x 15 people

HOS Achiever Fitness Center



THE HOS® FLEET



HOS 200 OSV



HOS 240 OSV



HOS 250 OSV



HOS 265 OSV



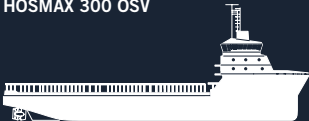
HOS 270 OSV



HOS 285 OSV



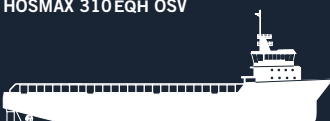
HOSMAX 300 OSV



HOSMAX 310 OSV



HOSMAX 310EQH OSV



HOSMAX 320 OSV

0 100 FT 200 FT 300 FT



HOSMPSV 250 & 265



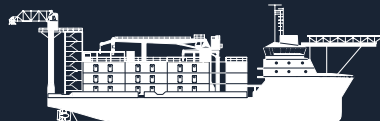
HOSMPSV 310



HOSMPSV 310 ES



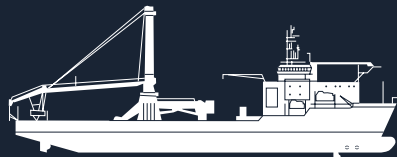
HOSMPSV 370



HOSMPSV FLOTEL



HOSMPSV 400 ES



HOSMPSV 430

0 100 FT 200 FT 300 FT 400 FT