

PRINCIPAL PARTICULARS

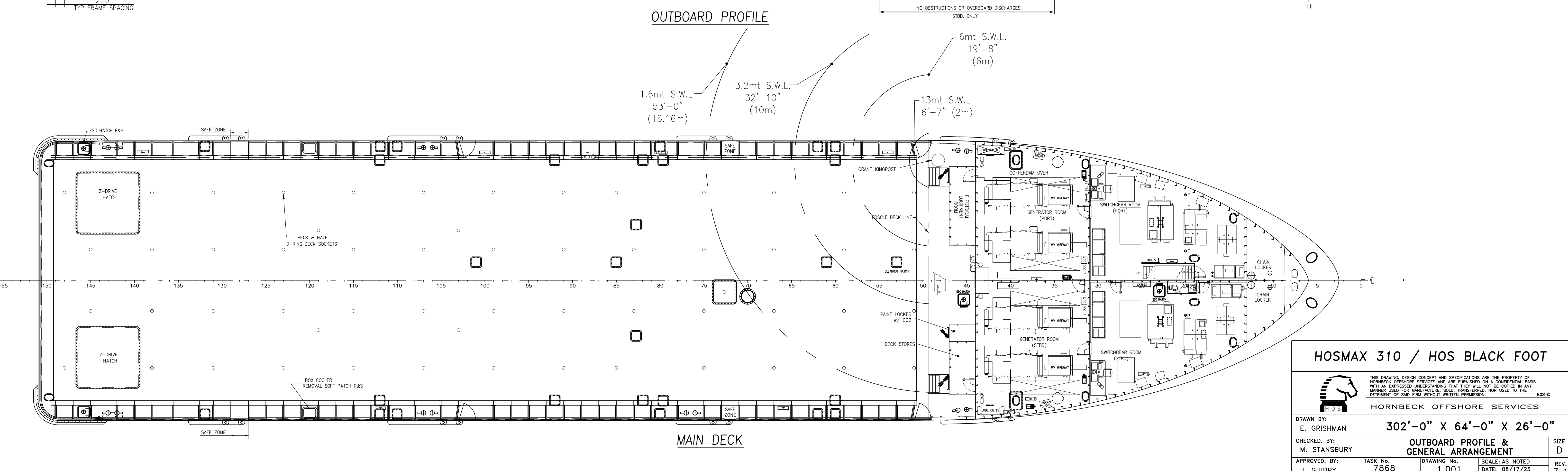
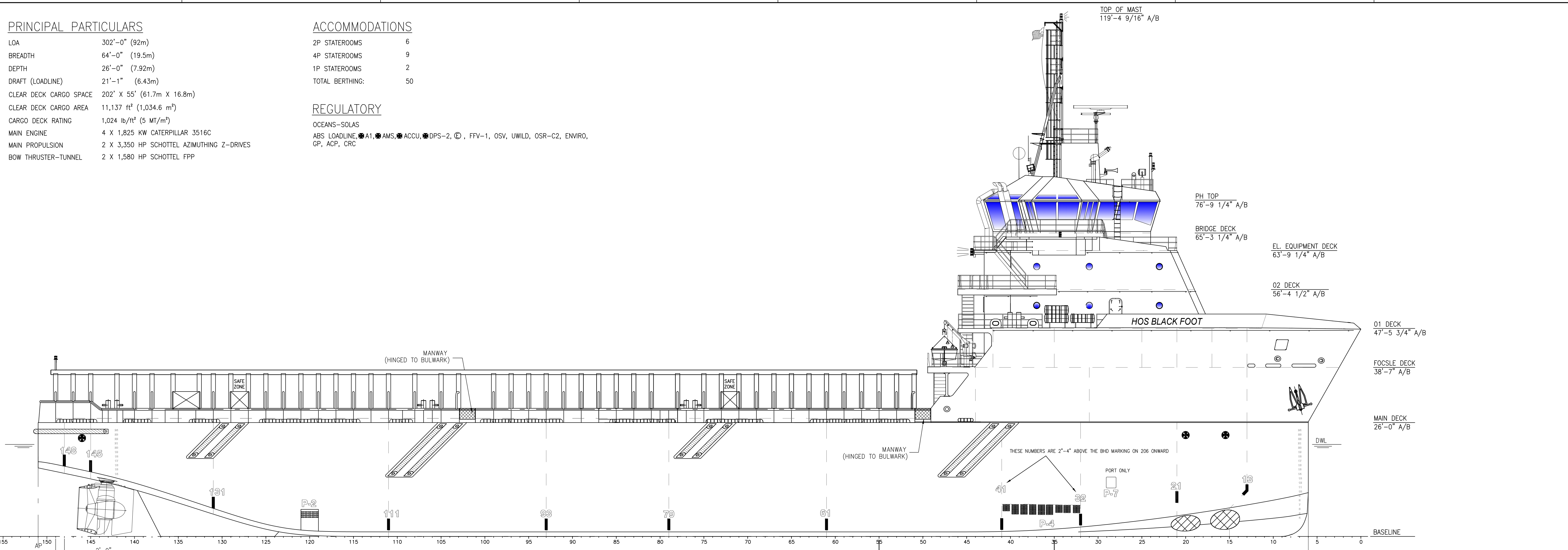
LOA	302'-0" (92m)
BREADTH	64'-0" (19.5m)
DEPTH	26'-0" (7.92m)
DRAFT (LOADLINE)	21'-1" (6.43m)
CLEAR DECK CARGO SPACE	202' X 55' (61.7m X 16.8m)
CLEAR DECK CARGO AREA	11,137 ft ² (1,034.6 m ²)
CARGO DECK RATING	1,024 lb/ft ² (5 MT/m ²)
MAIN ENGINE	4 X 1,825 KW CATERPILLAR 3516C
MAIN PROPULSION	2 X 3,350 HP SCHOTTEL AZIMUTHING Z-DRIVES
BOW THRUSTER-TUNNEL	2 X 1,580 HP SCHOTTEL FPP

ACCOMMODATIONS

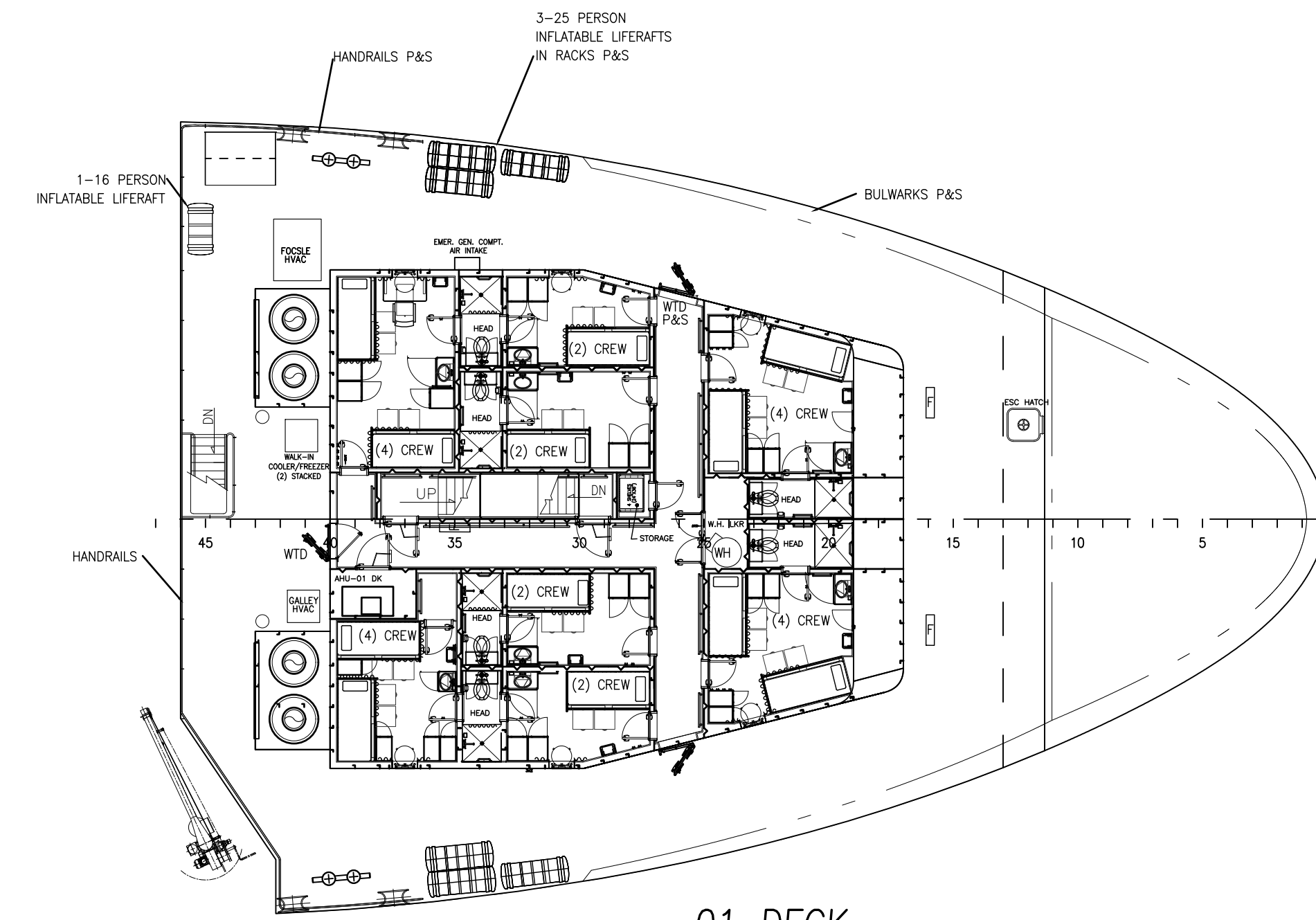
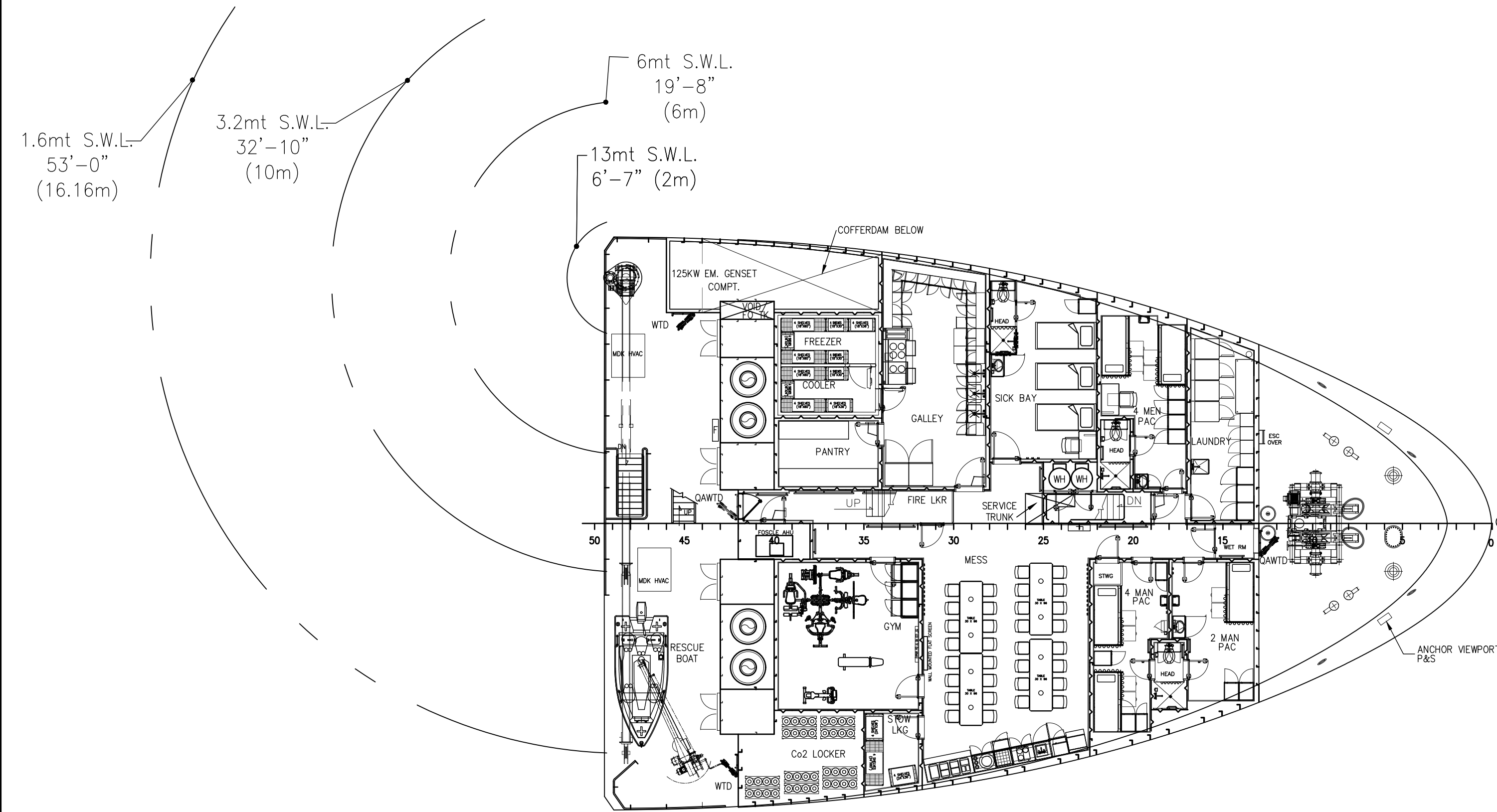
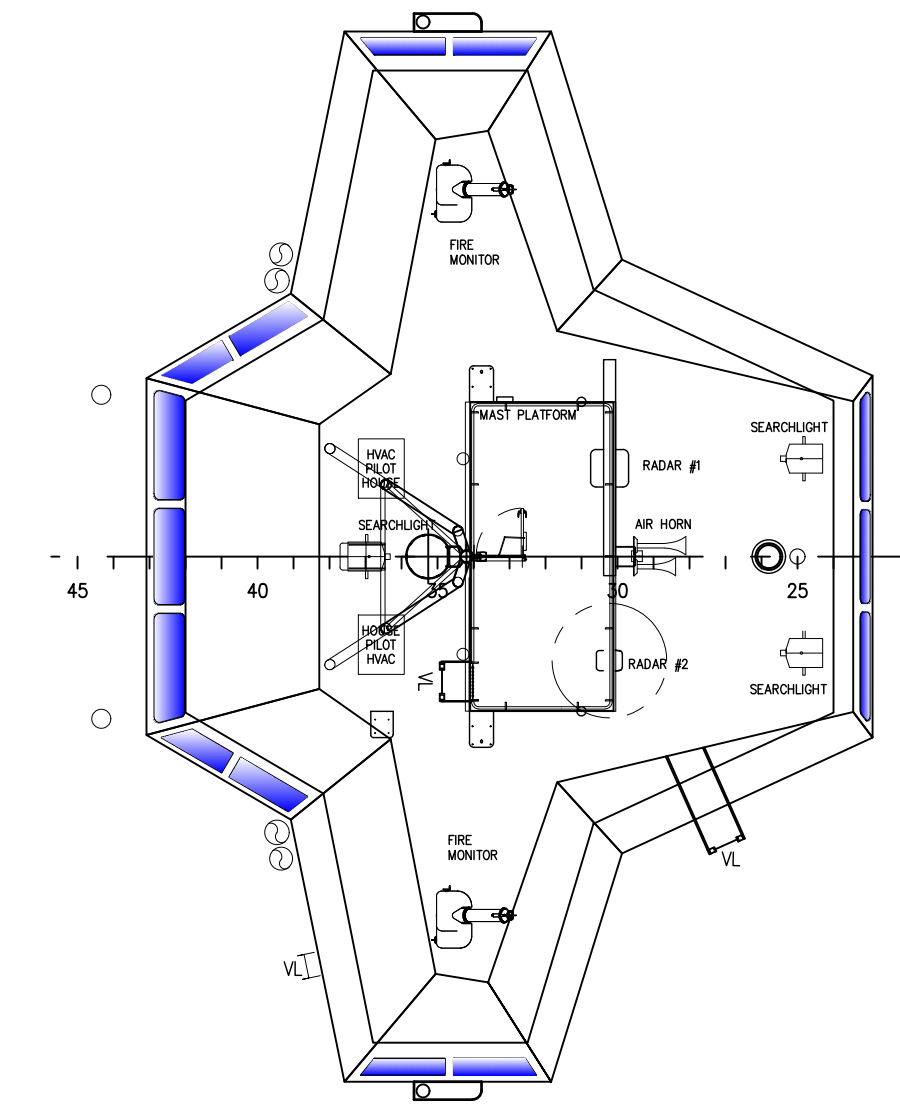
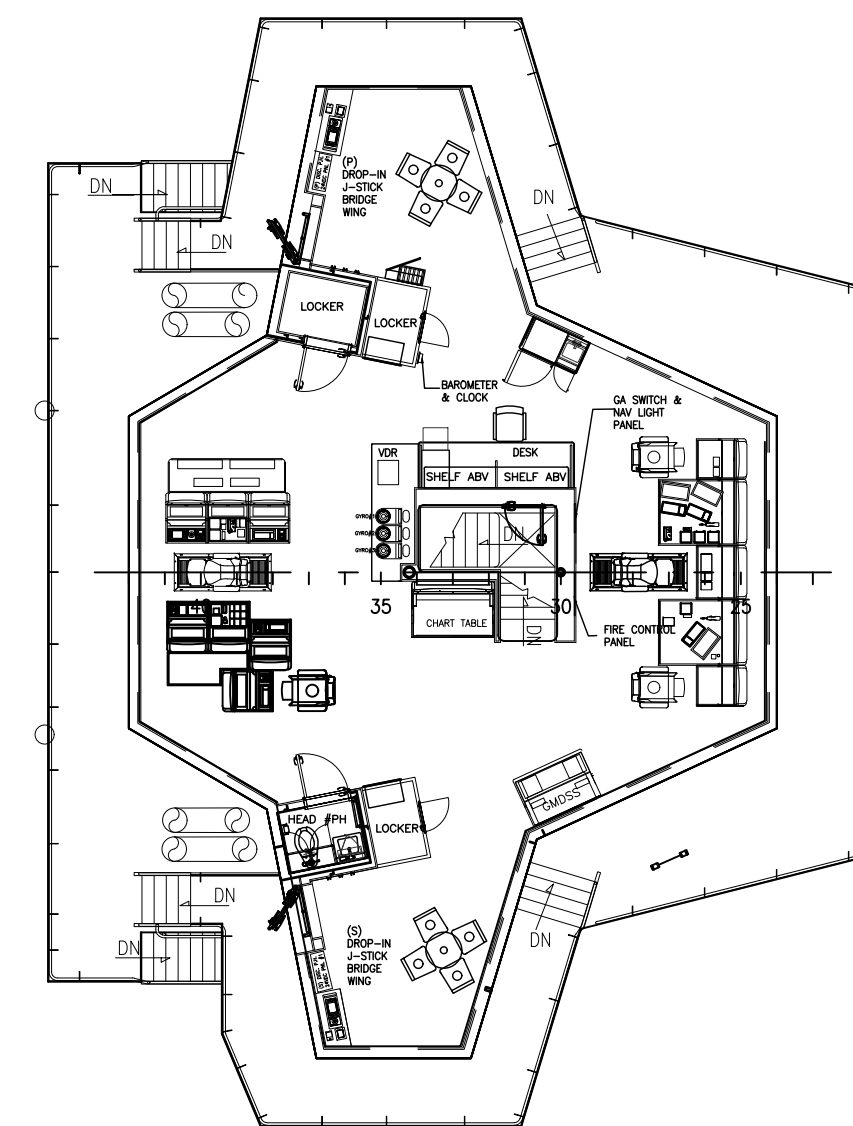
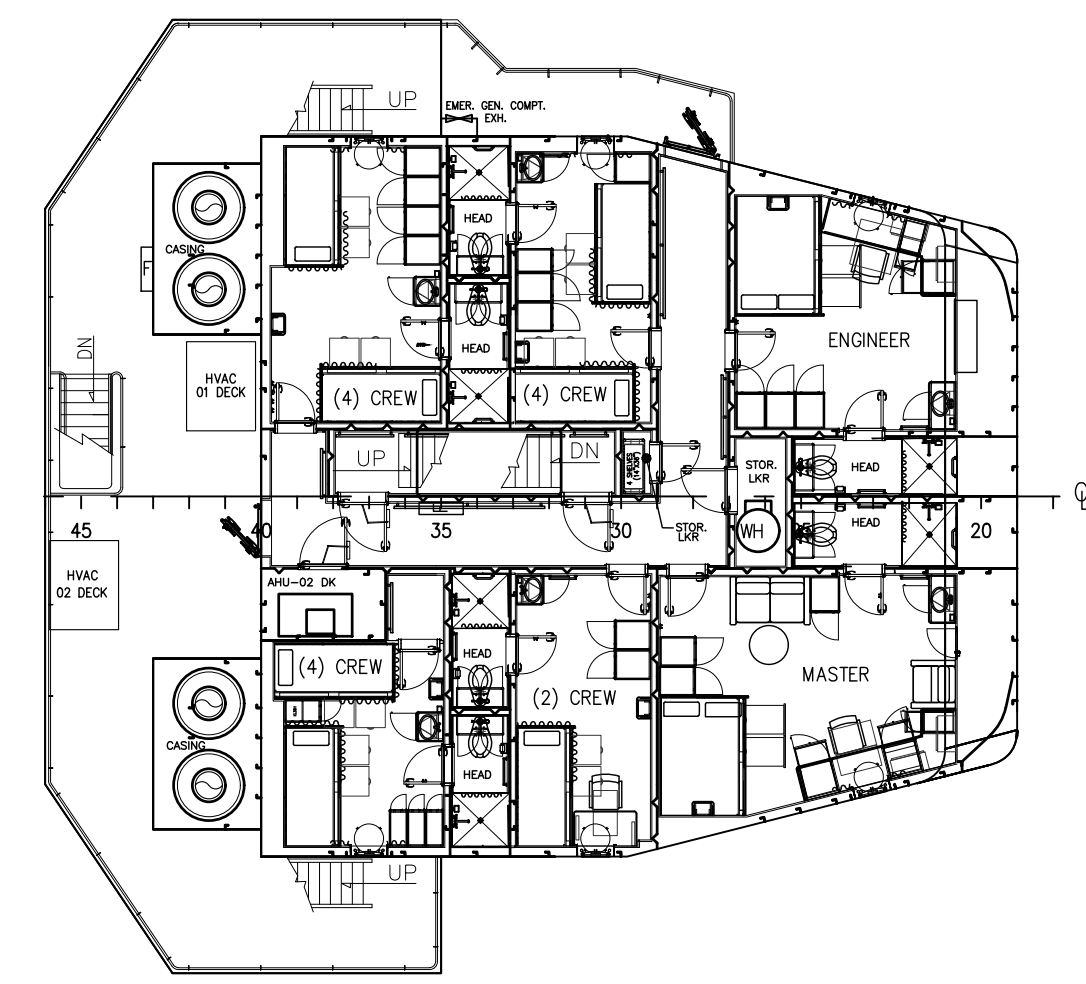
2P STATEROOMS	6
4P STATEROOMS	9
1P STATEROOMS	2
TOTAL BERTHING:	50

REGULATORY

OCEANS-SOLAS
 ABS LOADLINE, A1, AMS, ACCU, DPS-2, FFV-1, OSV, UWILD, OSR-C2, ENVIRO, GP, ACP, CRC



HOSMAX 310 / HOS BLACK FOOT			
THIS DRAWING, DESIGN CONCEPT AND SPECIFICATIONS ARE THE PROPERTY OF HORNBECK OFFSHORE SERVICES AND ARE FURNISHED ON A CONFIDENTIAL BASIS WITH AN EXPRESSED UNDERSTANDING THAT THEY WILL NOT BE COPIED, IN ANY MANNER USED FOR MANUFACTURE, SOLD, TRANSFERRED, NOR USED TO THE DETRIMENT OF HOS, FROM WITHOUT WRITTEN PERMISSION.			
HORNBECK OFFSHORE SERVICES			
DRAWN BY:	302'-0" X 64'-0" X 26'-0"		
E. GRISHMAN	SIZE D		
CHECKED BY:	OUTBOARD PROFILE & GENERAL ARRANGEMENT		
M. STANSBURY	REV. 3.1		
APPROVED BY:	TASK No. 7868	DRAWING No. 1.001	SCALE: AS NOTED
J. GUIDRY	HULL No. 206	SY: ESG	DATE: 08/17/23
		SHEET 1 OF 2	
LAST SAVE/PRINT: 12/16/2024 3:49 PM ENG: JSULLIVA SHEET: ANSI D 22X34			



	THIS DRAWING, DESIGN CONCEPT AND SPECIFICATIONS ARE THE PROPERTY OF HORNBECK OFFSHORE SERVICES AND ARE FURNISHED ON A CONFIDENTIAL BASIS WITH AN EXPRESSED UNDERSTANDING THAT THEY WILL NOT BE COPIED IN ANY MANNER USED FOR MANUFACTURE, SOLD, TRANSFERRED, NOR USED TO THE DETRIMENT OF SAO FIRM WITHOUT WRITTEN PERMISSION.			TASK No. 7868	DRAWING No. 1.001	SCALE: AS NOTED DATE: 08/17/23	SIZE D
	HORNBECK OFFSHORE SERVICES			HULL No. 206	SY: ESG	SHEET 2 OF 2	REV. 3.1
	OUTBOARD PROFILE & GENERAL ARRANGEMENT						