

PRINCIPAL PARTICULARS

LOA 302'-0"
 LBP - LWL 290'-0"
 BEAM 64'-0"
 DEPTH 26'-0"
 LOADLINE DRAFT 21'-1"
 OPERATIONAL DRAFT 18'-0"
 DESIGN DECK LOAD 1024 PSF
 GENERATORS (4) X 1825KW @ 1,800 RPM (WATER-COOLED)
 TOTAL KILOWATTS 7,300 KW @ 690 VAC
 MAIN PROPULSION (2) X 2,500KW @ 690 VAC @ 1,000 RPM (6,704HP TOTAL) FIXED PITCH VFD Z-DRIVE IN NOZZLES
 BOW THRUSTERS (2) X 1,180 KW @ 690 VAC @ 1,200 RPM (3,164HP TOTAL) FIXED PITCH VFD/REVERSING MOTORS
 FIRE MONITORS (2) X 5284 GPM / (495KW @ 690 VAC) 665HP/394' REACH - REMOTE CONTROLLED FIRE MONITORS
 REGULATORY USCG SUB I & L / SOLAS/ABS *A1, OFFSHORE SERVICE VESSEL, *MS, DPS-2, ENVIRO, GP
 *ACCU, UWILD, FIT I, *E, HELIDK, CRC

VESSEL ACCOMMODATIONS SUMMARY TABLE

ACCOMMODATIONS	50
STATEROOMS	17
HEADS	18
LOUNGE	1
LAUNDRY AREA	1
GALLEY	1
MESS AREA	1
SICK BAY	1

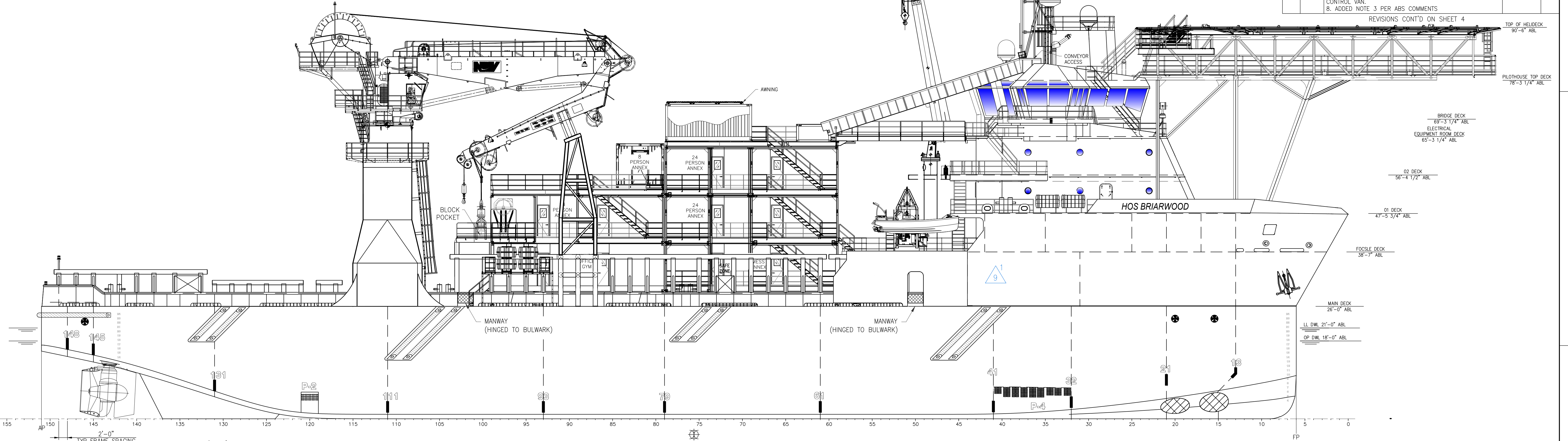
ANNEX ACCOMMODATIONS SUMMARY TABLE

ACCOMMODATIONS	80
STATEROOMS	20
HEADS	23
OFFICE	1
LAUNDRY AREA	1
GALLEY	1
MESS AREA	1
GYM	1

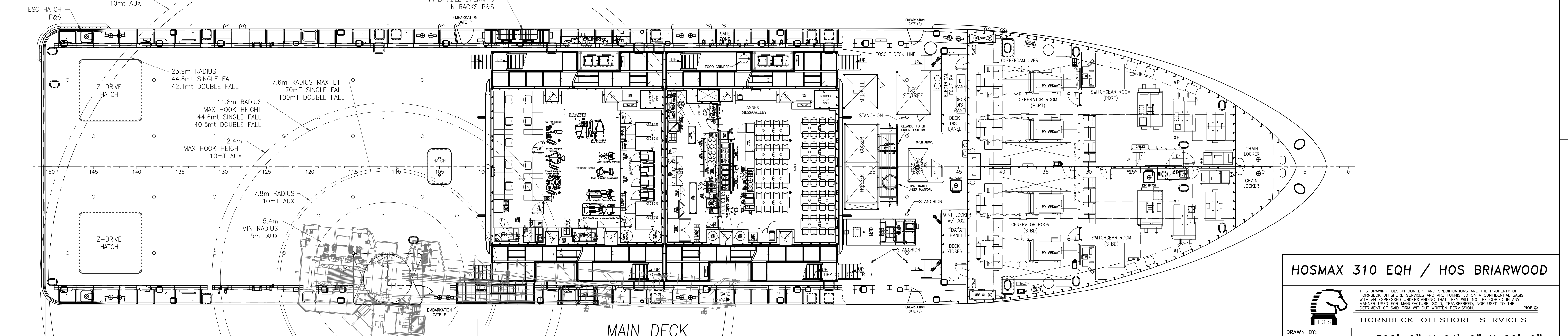
REVISIONS

REV	ZONE	DESCRIPTION	DATE	BY
1	-	1. REVISED GENERAL NOTES. 2. RAISED STORES CRANE.	11/20/15	JJC
2	-	1. EXTENDED FOCSE DECK TO FRAME 58.5. 2. RELOCATED MSD FORWARD OF ANNEX. 3. RELOCATED LIFERAF PLATFORMS FRAME 98. 4. RELOCATED HVAC CONDENSERS FROM FOCSE TO 01 DECK. 5. RELOCATED TRASH BIN AND COMPACTOR FROM MAIN DECK FRAME 100 TO FOCSE DECK. 6. SMOKERS LOUNGE FLOOR PLAN UPDATED. 7. 36"x12' 8-MAN SLEEPER REPLACED WITH 33"x11' 8-MAN.	07/12/15	JJC
3	-	1. ADDED ROV SPREAD. 2. ADDED UPPER LANDING ABOVE ANNEX TIER 3. 3. ADDED TIER 3 STAIRS TO ACCESS UPPER LANDING. 4. ADDED MISSION VAN TO UPPER LANDING. 5. RELOCATED TRASH BIN FROM FOCSE TO UPPER LANDING. 6. RELOCATED TRASH COMPACTOR TO MAIN DECK. 7. ADDED GRATING ACCESS FROM 01 DECK TO ROV CONTROL VAN. 8. ADDED NOTE 3 PER ABS COMMENTS	09/16/16	JJC

REVISIONS CONT'D ON SHEET 4



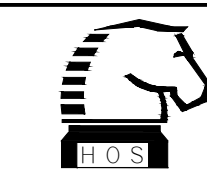
OUTBOARD PROFILE



MAIN DECK

CLEAR DECK LENGTH - 100'-0"
 CLEAR AREA - ~5200 SQFT

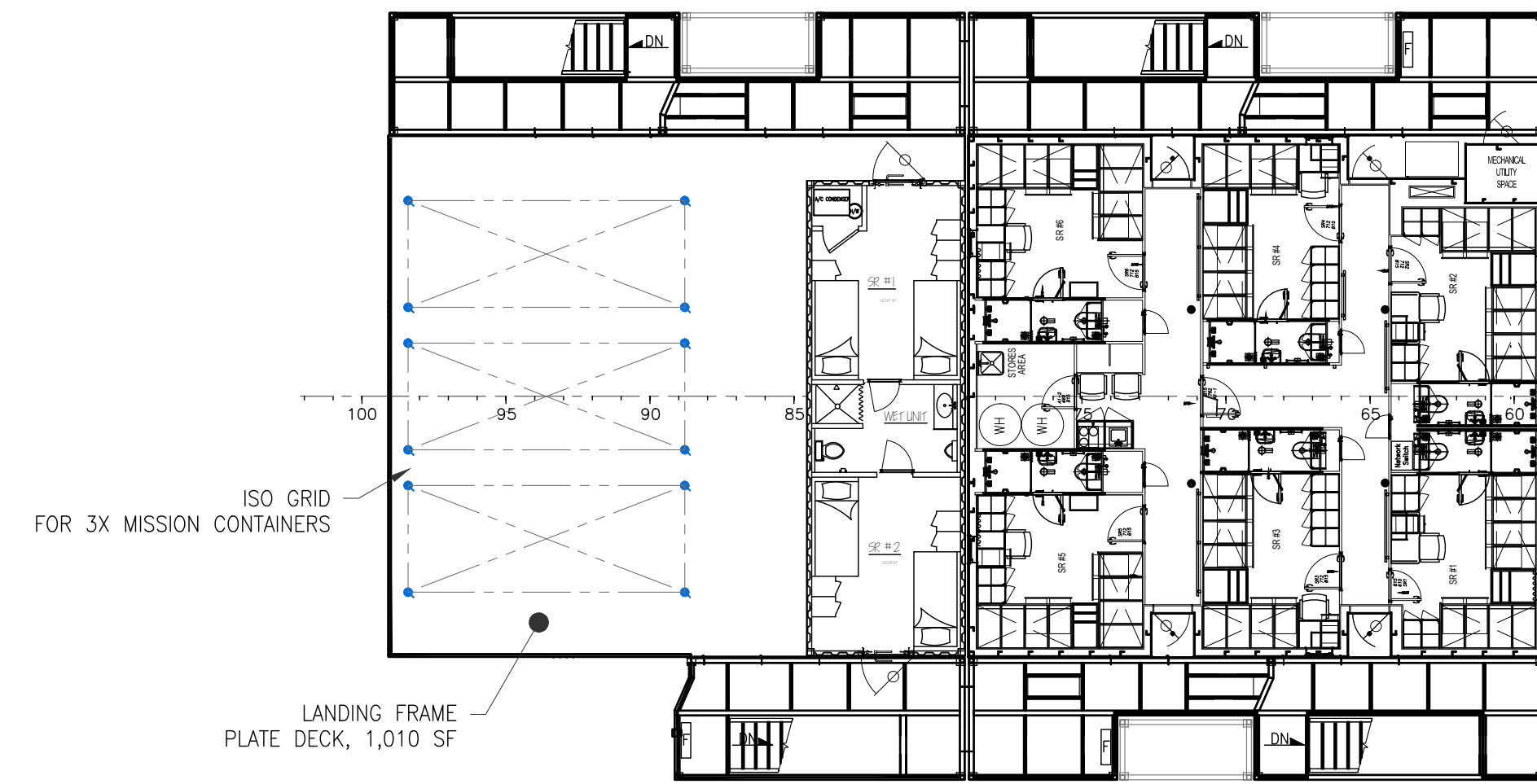
HOSMAX 310 EQH / HOS BRIARWOOD



THIS DRAWING, DESIGN CONCEPT AND SPECIFICATIONS ARE THE PROPERTY OF HORNBECK OFFSHORE SERVICES AND ARE FURNISHED ON A CONFIDENTIAL BASIS WITH AN EXPRESSED UNDERSTANDING THAT THEY WILL NOT BE COPIED IN ANY MANNER USED FOR MANUFACTURE, SOLD, TRANSFERRED, NOR USED TO THE DETRIMENT OF SAID FIRM WITHOUT WRITTEN PERMISSION. 1005 ©
 HORNBECK OFFSHORE SERVICES

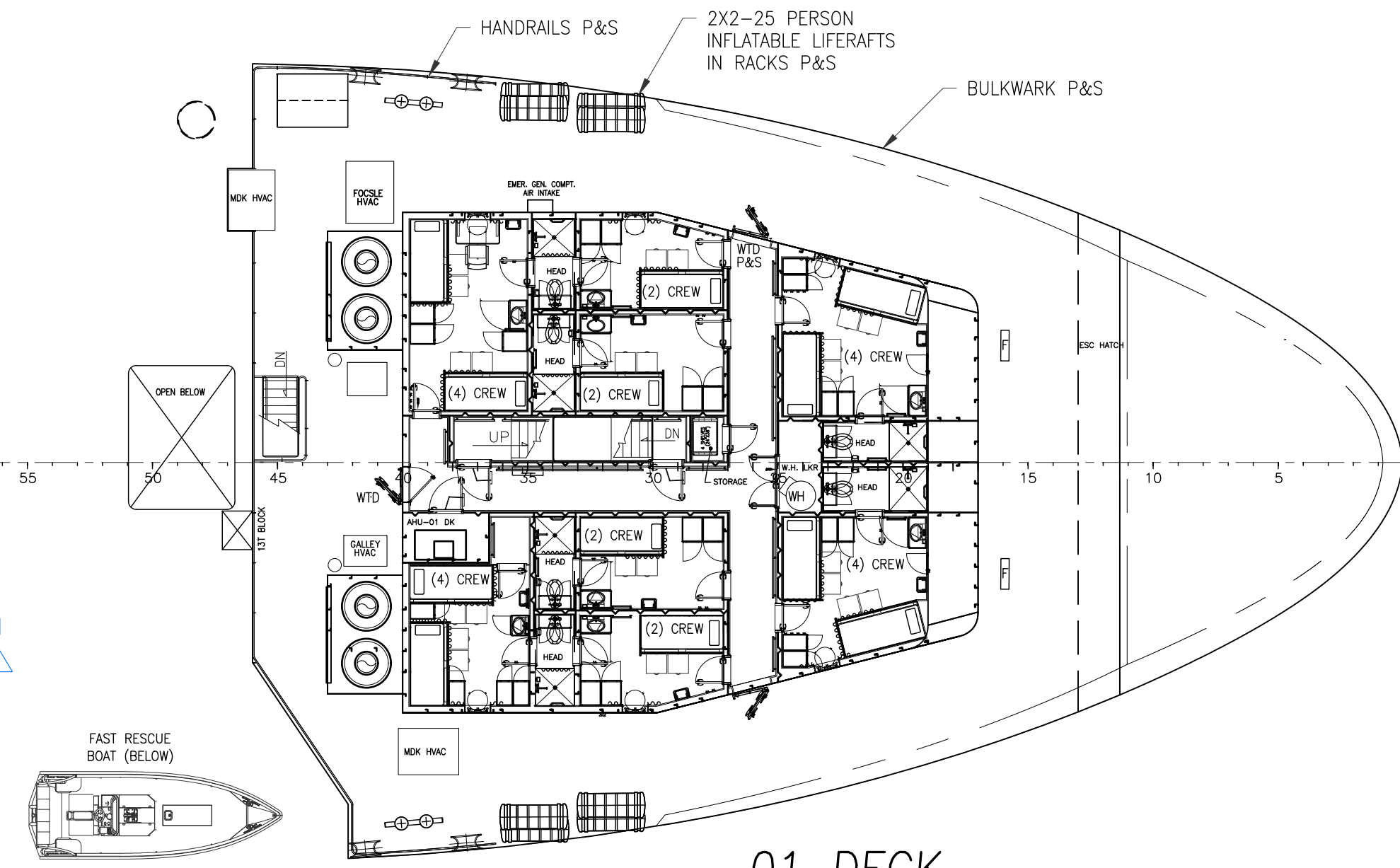
DRAWN BY: S. MAUL	302'-0" X 64'-0" X 26'-0"		
CHECKED BY: J. GUIDRY	GENERAL ARRANGEMENT & OUTBOARD PROFILE		
APPROVED BY: J. GUIDRY	TASK No. 7059	DRAWING No. 1,001-4	SCALE: AS NOTED DATE: 08/23/19
	HULL No. 210	SY: ESG	SHEET 1 OF 5

SIZE D
REV. 8



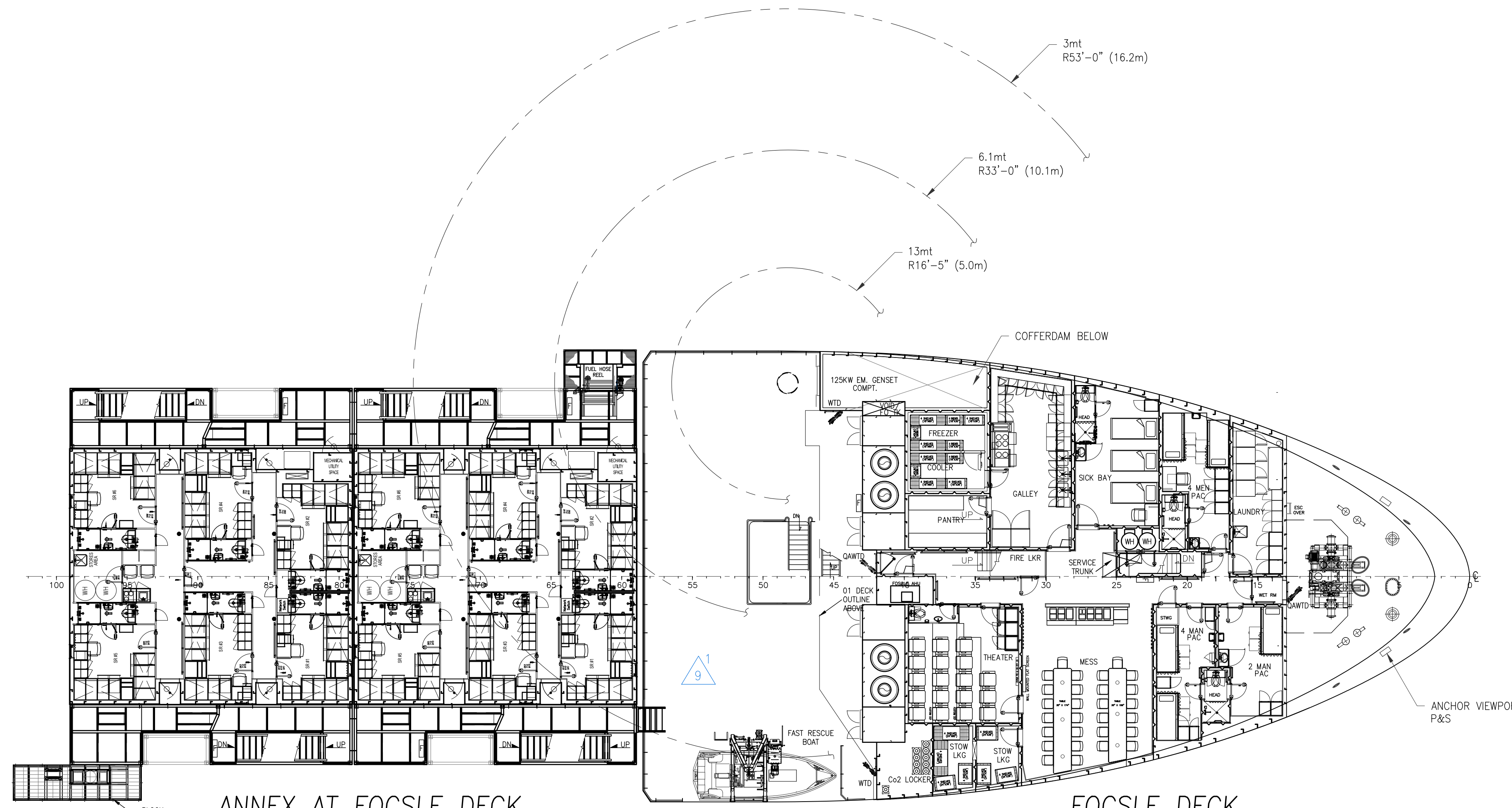
ANNEX AT 01 DECK

32 BERTH



01 DECK

24 BERTH



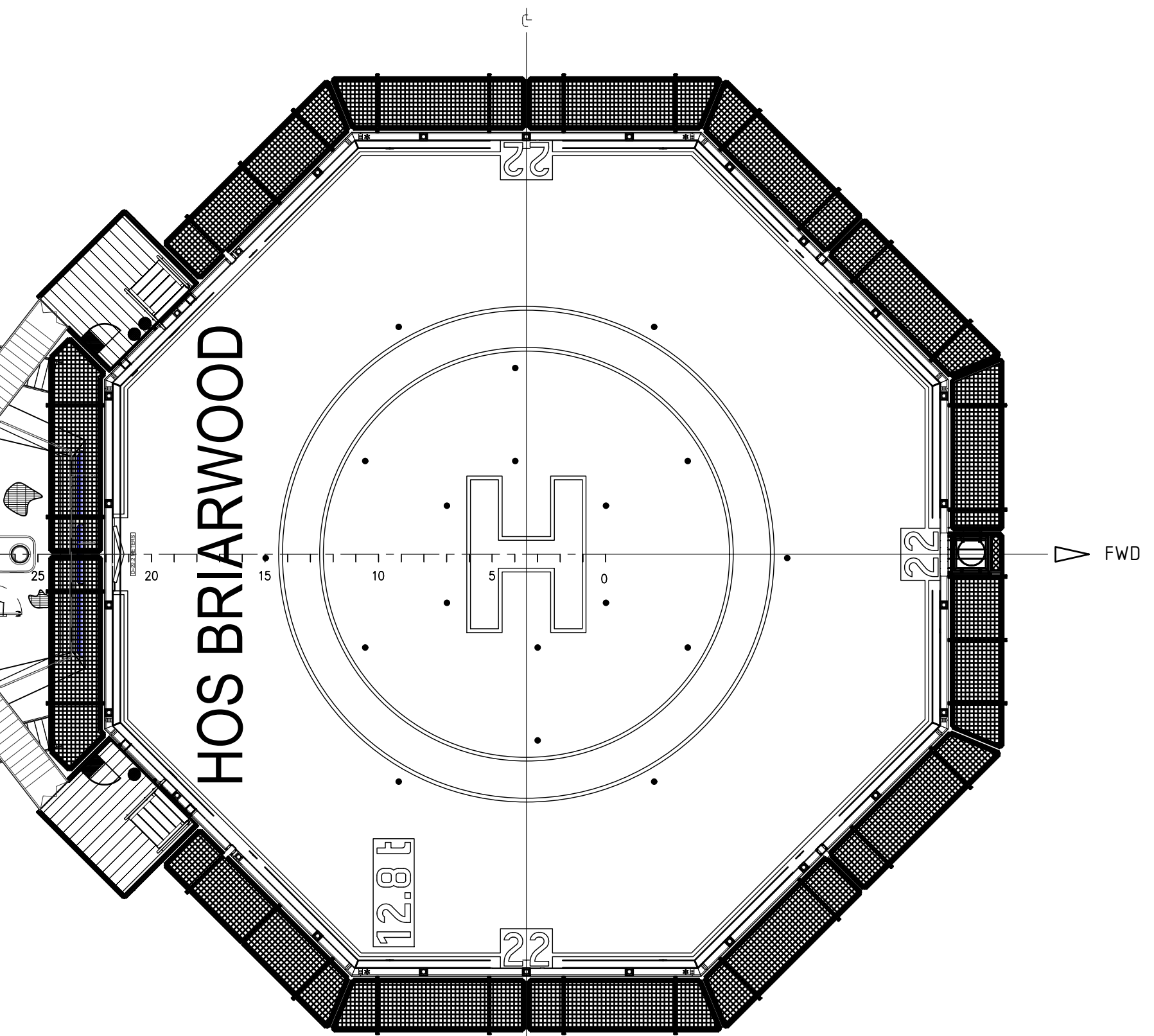
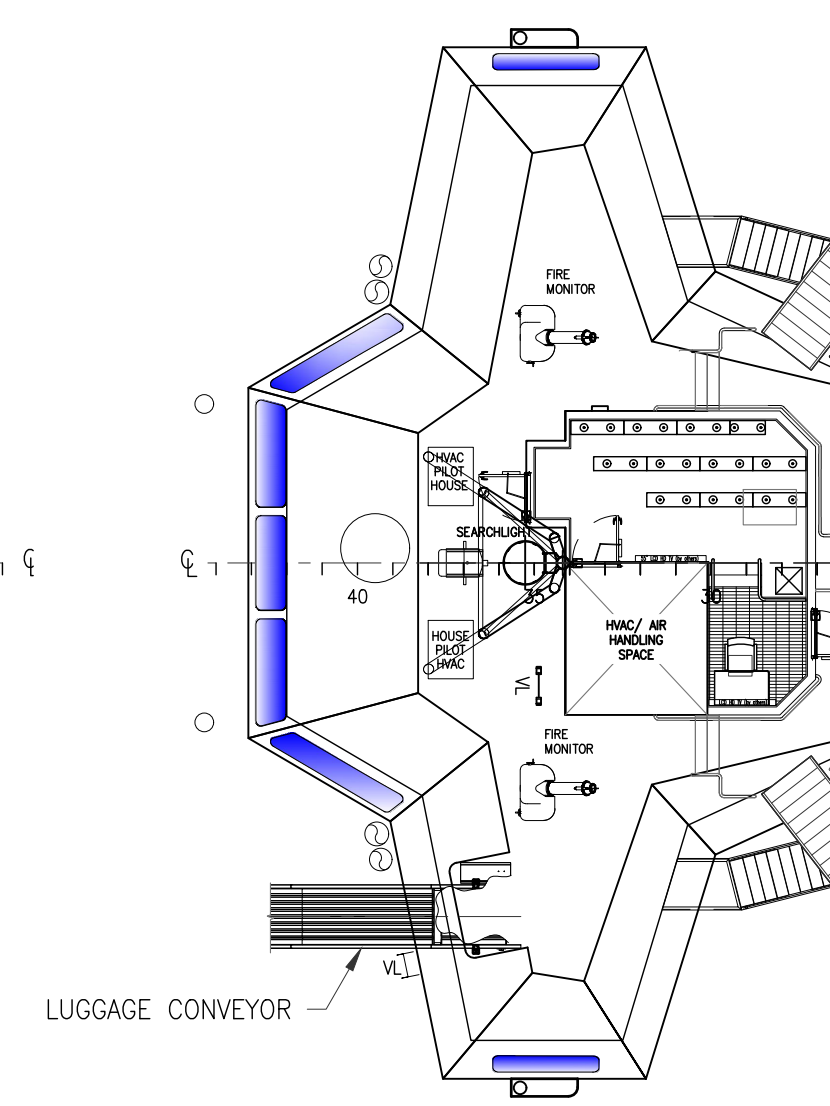
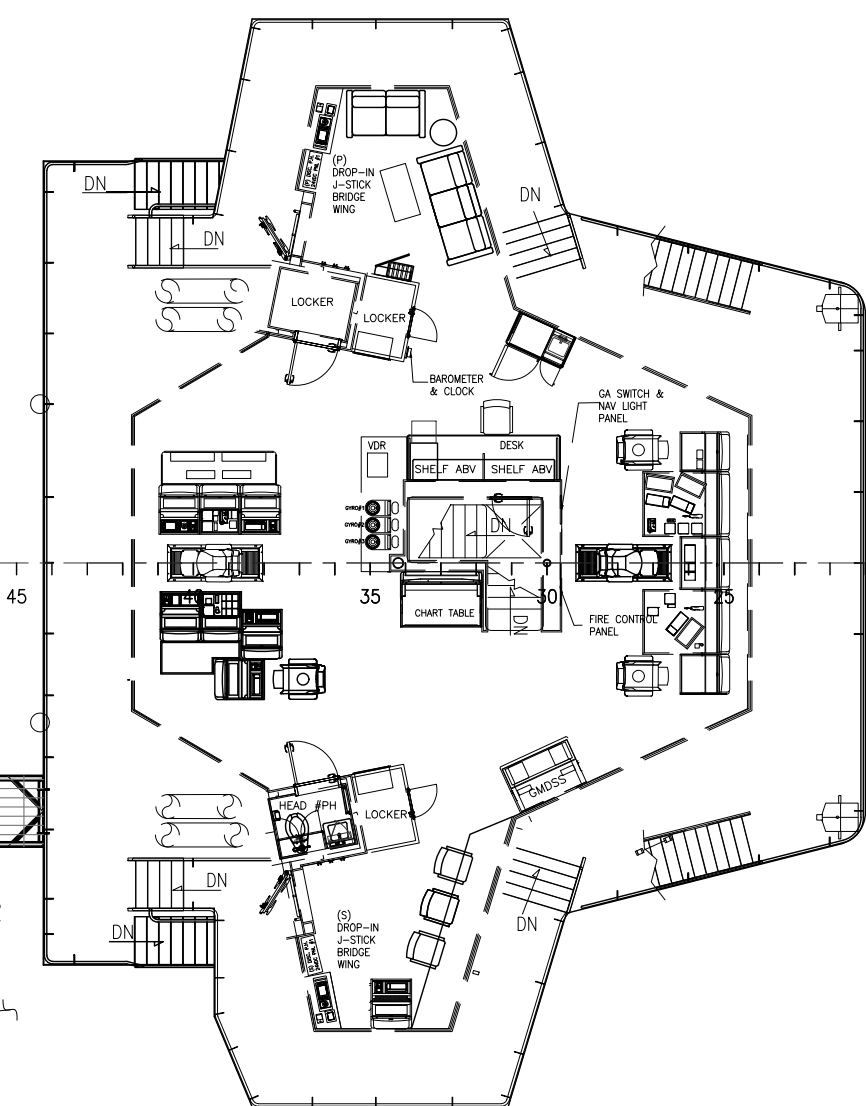
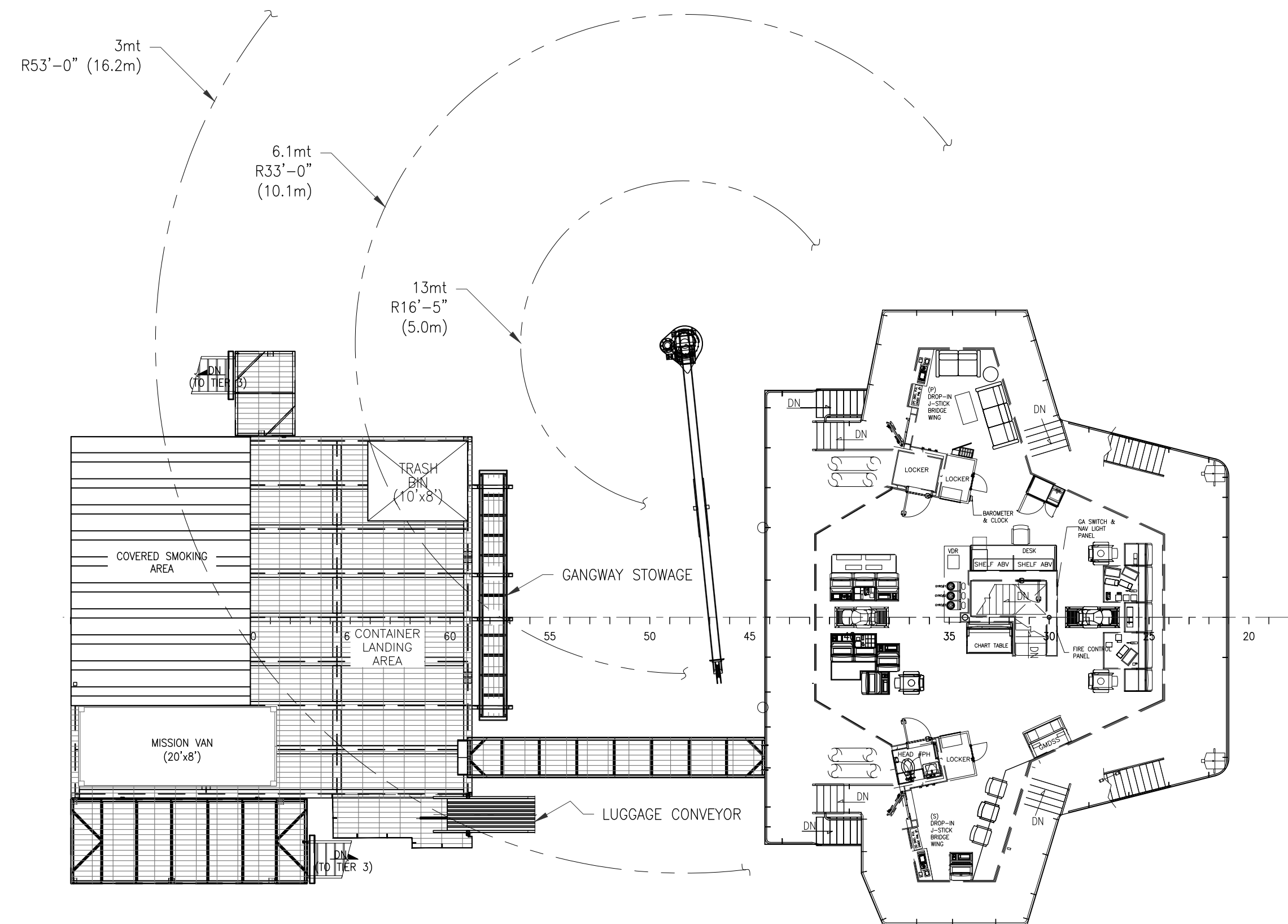
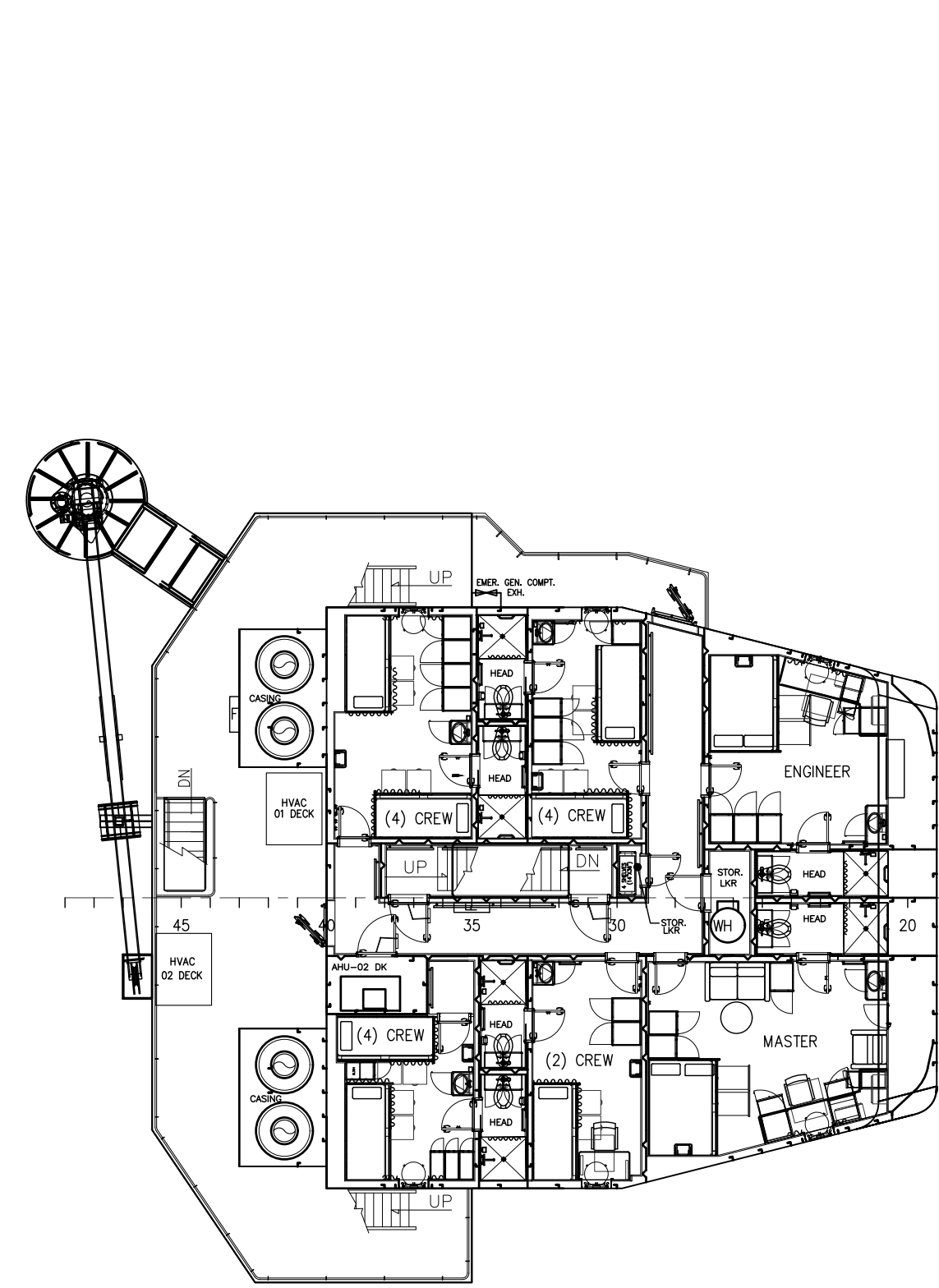
ANNEX AT FOCLE DECK

48 BERTH

FOCLE DECK

10 BERTH (PAC)
3 BERTH (SICK BAY)

	THIS DRAWING, DESIGN CONCEPT AND SPECIFICATIONS ARE THE PROPERTY OF HORNBECK OFFSHORE SERVICES AND ARE FURNISHED ON A CONFIDENTIAL BASIS WITH AN EXPRESSED UNDERSTANDING THAT THEY WILL NOT BE COPIED IN ANY MANNER USED FOR MANUFACTURE, SALE, TRANSFER, NOR USED TO THE DETRIMENT OF SAID FIRM WITHOUT WRITTEN PERMISSION.			GENERAL ARRANGEMENT & OUTBOARD PROFILE SIZE D	
	TASK No.	DRAWING No.	SCALE: AS NOTED		REV.
	7059	1,001-4	DATE: 08/23/19		8
	HULL No. 210	SY: ESG	SHEET 2 OF 4		



D

D

C

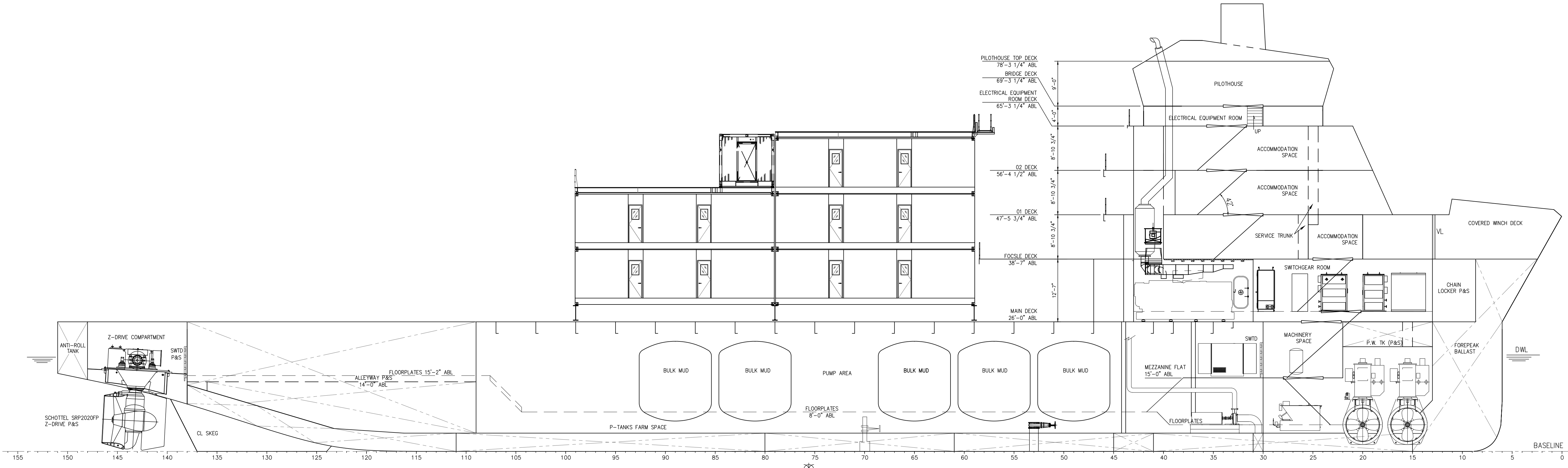
C

B

B

A

A

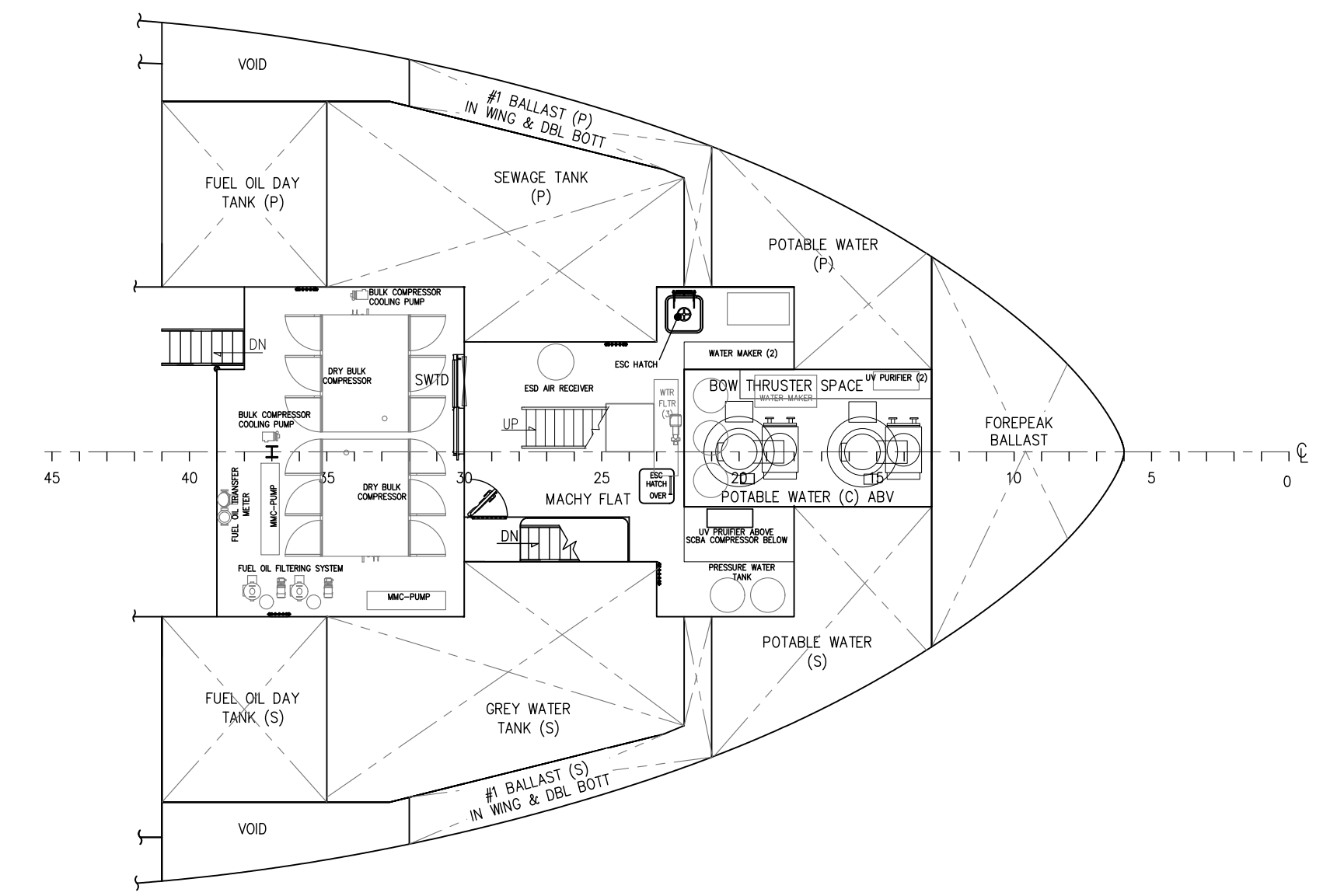


THIS DRAWING, DESIGN CONCEPT AND SPECIFICATIONS ARE THE PROPERTY OF HORNBECK OFFSHORE SERVICES AND ARE FURNISHED ON A CONFIDENTIAL BASIS WITH AN EXPRESSED UNDERSTANDING THAT THEY WILL NOT BE COPIED IN ANY MANNER USED FOR MANUFACTURE, SALE, TRANSFERRED, NOR USED TO THE DETRIMENT OF SAID FIRM WITHOUT WRITTEN PERMISSION.

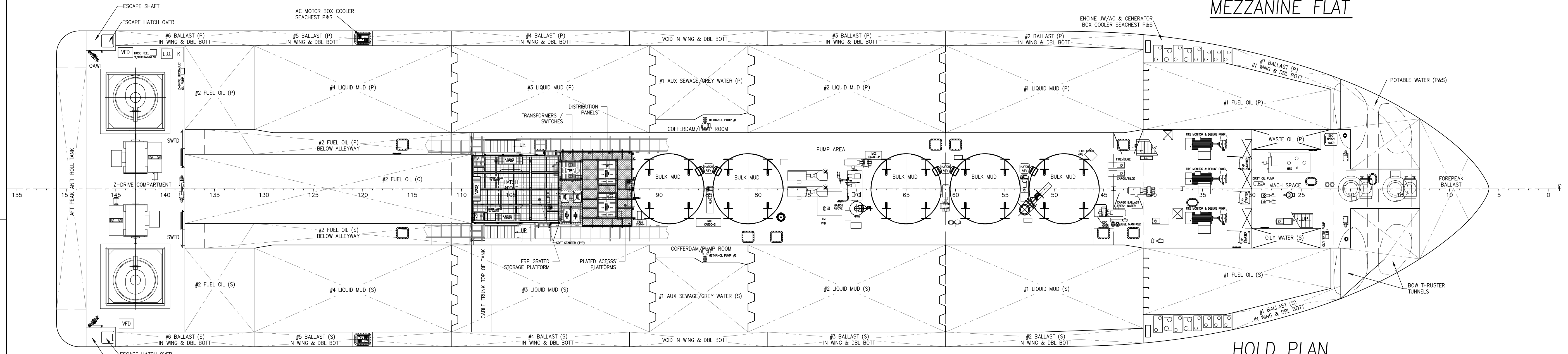
HORNBECK OFFSHORE SERVICES

GENERAL ARRANGEMENT & OUTBOARD PROFILE				SIZE D
TASK No. 7059	DRAWING No. 1.001-4	SCALE: AS NOTED	REV. 8	
HULL No. 210	SY: ESG	DATE: 08/23/19	REV. 8	
SHEET 3 OF 4			REV. 8	

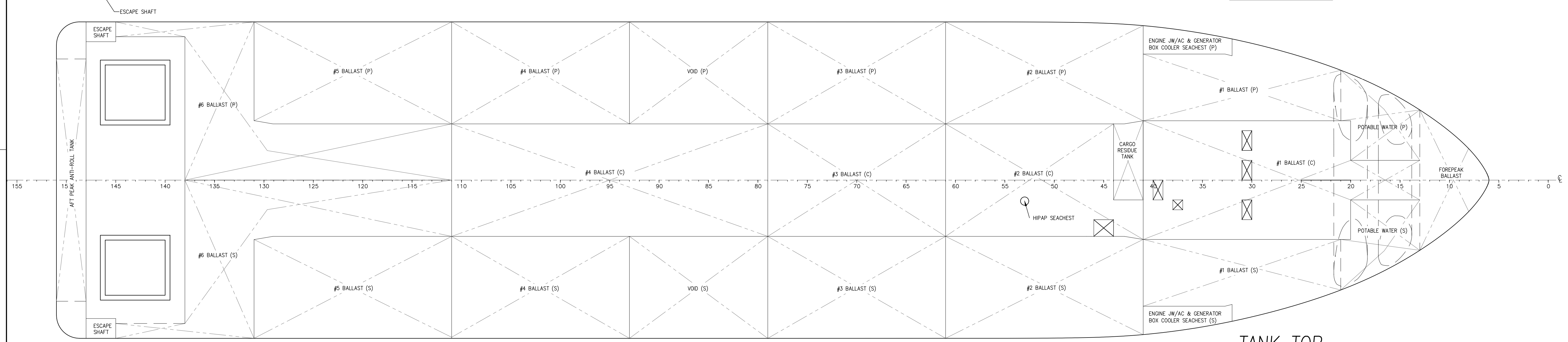
REVISIONS				
REV	ZONE	DESCRIPTION	DATE	BY
4	-	1. MESS HALL FLOOR PLAN UPDATED	07/03/17	NBB
5	-	1. ADDED OAS ARGMT TO OUTBOARD PROFILE & MAIN DECK PLAN (SHT 1). ADJUSTED CLEAR DECK LENGTHS. 2. ADDED SHEET 5 AND OAS ARRANGEMENT DETAILS. 3. ADDED OPERATIONAL DRAFT TO GENERAL NOTES & REVISED NOTES 1.2 & 2. 4. ADDED COVERED SMOKING AREA AWNING TO OUTBOARD PROFILE (SHT 1) & LANDING FRAME PLAN (SHT 3). 5. ADDED FUEL HOSE REEL, PORT SIDE ANNEX, FOCSLE DK LEVEL (SHT 2).	12/13/17	SM
6	-	1. REMOVED OAS. 2. INSTALLED LUGGAGE CONVEYOR. 3. INSTALLED TOP TIER ANNEX TO BRIDGE WALKWAY.	03/22/18	MS
7	SHT 1 PROFILE MD SHT 1 MD SHT 4 HOLD SHT 2 VAR SHT 1 VAR SHT 4	1. ADDED 70T KBC / REMOVED AFT 2 DRY BULK TANKS / ADDED ANTI ROLL TANK AT STERN. 2. ADDED MANHOLE AT AFT MAIN DECK IN WAY OF NEW ANTI-ROLL TANK. ADDED DECK HATCH AT FR 105 CL. 3. ADDED ELECTRICAL DISTRIBUTION AND TRANSFORMER EQUIPMENT, ACCESS & STORAGE PLATFORMS. 4. REVISED TIER 3 STACKING FRAME TO BE PLATE FOR CONTAINER STORAGE. MODIFIED AFT TIER 2 & 3 P&S ANNEX STAIR AND RAIL LAYOUTS FOR CRANE SLEWING CLEARANCE. 5. ADDED CRANE BOOM REST & BLOCK POCKETS. 6. CONVERTED METHANOL TANKS TO AUX SEWAGE/GREY WATER HOLDING TANKS	10/10/19	SMM
8	SHT 4 SHT 4 SHT 1 SHT 1	1. ADDED WIRE TRUNK TO #3 STBD LM 2. UPDATED AUX DISTRIBUTION ARRANGEMENT. 3. INCREASED SIZE OF HATCH AT FRAME 105. 4. UPDATED MIDSHIP STBD BITTS	12/4/2019	MS
9	SHT 1 & 2	1. REMOVED ROV EQUIPMENT AND CONTROL VAN WALKING FRAME	9/28/2022	DA



MEZZANINE FLAT



HOLD PLAN



TANK TOP

<p>HORNBECK OFFSHORE SERVICES</p>	GENERAL ARRANGEMENT & OUTBOARD PROFILE		SIZE D	
	TASK No. 7059	DRAWING No. 1.001-4	SCALE: AS NOTED	REV. 8
	HULL No. 210	SY: ESG	DATE: 08/23/19	SHEET 4 OF 4
	THIS DRAWING, DESIGN CONCEPT AND SPECIFICATIONS ARE THE PROPERTY OF HORNBECK OFFSHORE SERVICES AND ARE FURNISHED ON A CONFIDENTIAL BASIS WITH AN EXPRESSED UNDERSTANDING THAT THEY WILL NOT BE COPIED IN ANY MANNER USED FOR MANUFACTURE, SALE, TRANSFER, OR REUSE TO THE DETRIMENT OF SAID FIRM WITHOUT WRITTEN PERMISSION.			HOS