

8 7 6 5 4 3 2 1

PRINCIPAL PARTICULARS

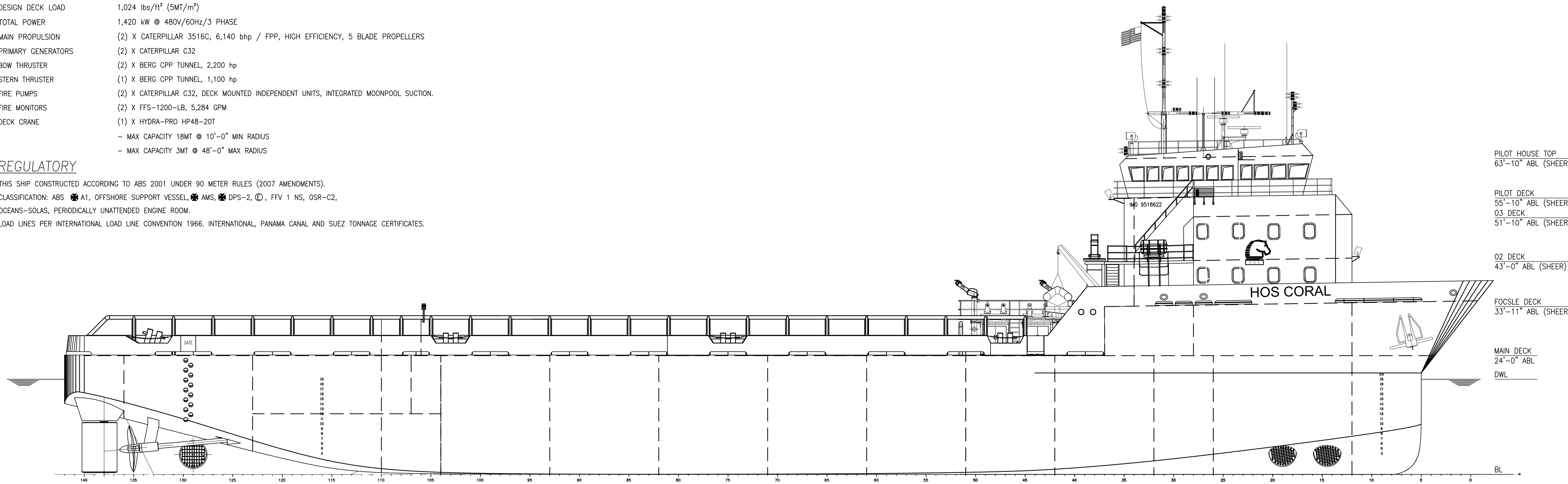
LENGTH OVERALL 285'-0"  
 LENGTH WATRLINE 274'-0"  
 REGULATORY LENGTH 265'-10"  
 MOLDED BREADTH 64'-0"  
 DESIGN DRAFT 19'-0"  
 MOLDED DEPTH 24'-0" TO MAIN DECK  
 TONNAGE 3,299 IGT  
 DESIGN DECK LOAD 1,024 lbs/ft<sup>2</sup> (SMT/m<sup>2</sup>)  
 TOTAL POWER 1,420 kW @ 480V/60Hz/3 PHASE  
 MAIN PROPULSION (2) X CATERPILLAR 3516C, 6,140 bhp / FPP, HIGH EFFICIENCY, 5 BLADE PROPELLERS  
 PRIMARY GENERATORS (2) X CATERPILLAR C32  
 BOW THRUSTER (2) X BERG CPP TUNNEL, 2,200 hp  
 STERN THRUSTER (1) X BERG CPP TUNNEL, 1,100 hp  
 FIRE PUMPS (2) X CATERPILLAR C32, DECK MOUNTED INDEPENDENT UNITS, INTEGRATED MOONPOOL SUCTION.  
 FIRE MONITORS (2) X FFS-1200-LB, 5,284 GPM  
 DECK CRANE (1) X HYDRA-PRO HP48-20T  
 - MAX CAPACITY 18MT @ 10'-0" MIN RADIUS  
 - MAX CAPACITY 3MT @ 48'-0" MAX RADIUS

ACCOMMODATIONS

STATEROOMS: 13 BERTHING: 24 PERSONS

REGULATORY

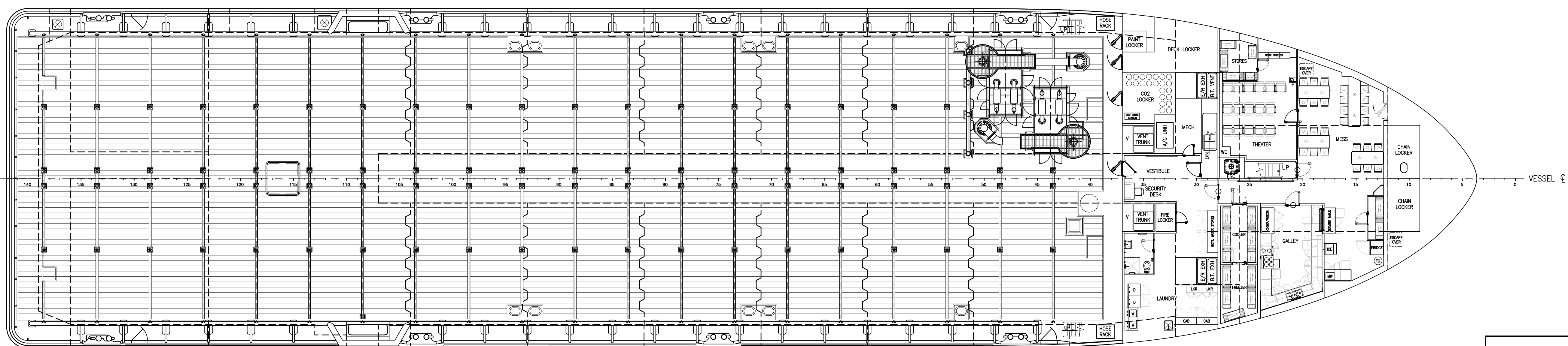
THIS SHIP CONSTRUCTED ACCORDING TO ABS 2001 UNDER 90 METER RULES (2007 AMENDMENTS).  
 CLASSIFICATION: ABS A1, OFFSHORE SUPPORT VESSEL, AMS, DPS-2, C, FFV 1 NS, OSR-C2.  
 OCEANS-SOLAS, PERIODICALLY UNATTENDED ENGINE ROOM.  
 LOAD LINES PER INTERNATIONAL LOAD LINE CONVENTION 1966. INTERNATIONAL, PANAMA CANAL AND SUEZ TONNAGE CERTIFICATES.



PILOT HOUSE TOP  
63'-10" ABL (SHEER)  
  
 PILOT DECK  
55'-10" ABL (SHEER)  
03 DECK  
51'-10" ABL (SHEER)  
  
 02 DECK  
43'-0" ABL (SHEER)  
  
 FOCSELE DECK  
33'-11" ABL (SHEER)  
  
 MAIN DECK  
24'-0" ABL  
DWL

OUTBOARD PROFILE

LKG STBD  
SCALE: 3/32" = 1'-0"



MAIN DECK

SCALE: 3/32" = 1'-0"

**HOS 285 / HOS CORAL**

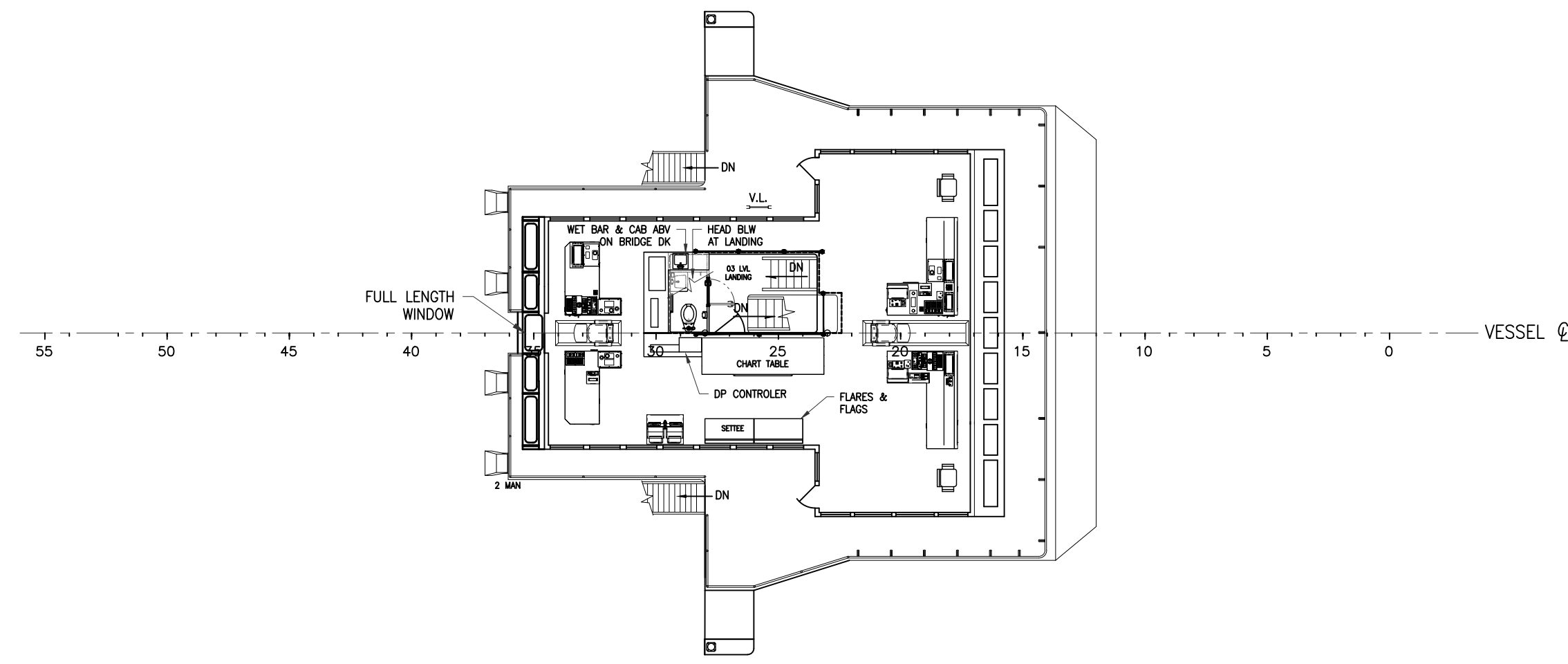


THIS DRAWING, DESIGN CONCEPT AND SPECIFICATIONS ARE THE PROPERTY OF HORNBECK OFFSHORE SERVICES AND ARE FURNISHED ON A CONFIDENTIAL BASIS WITH AN EXPRESSED UNDERSTANDING THAT THEY WILL NOT BE COPIED IN ANY MANNER USED FOR MANUFACTURE, SOLD, TRANSFERRED, NOR USED TO THE DETRIMENT OF SAID FIRM WITHOUT WRITTEN PERMISSION.

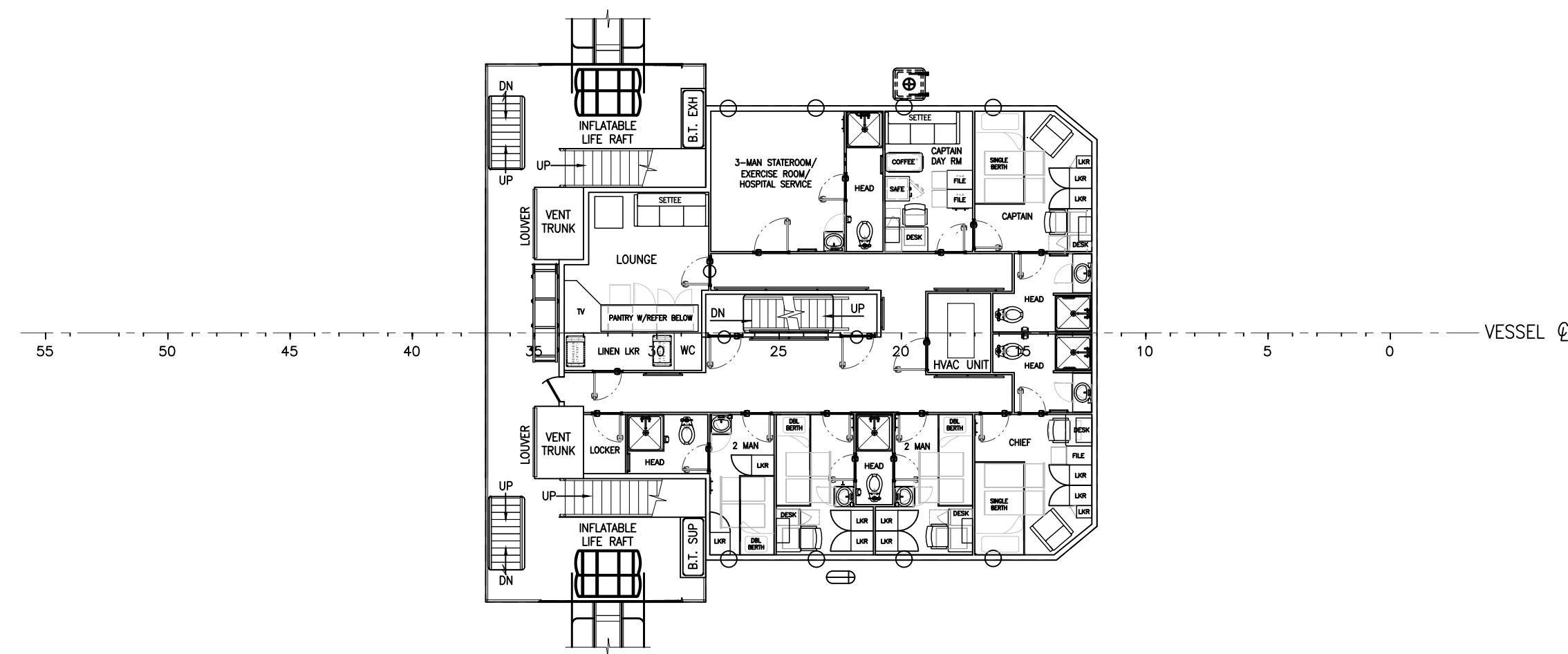
HORNBECK OFFSHORE SERVICES

DRAWN BY: S. MAUL	285'-0" X 64'-0" X 24'-0"			SIZE D
CHECKED BY: M. STANSBURY	OUTBOARD PROFILE & GENERAL ARRANGEMENT			REV. 6
APPROVED BY: J. GUIDRY	TASK No. 7319	DRAWING No. 1,001	SCALE: AS NOTED DATE: 02/21/19	REV. 6
	HULL No. 1990	SY: VTHM	SHEET 1 OF 2	

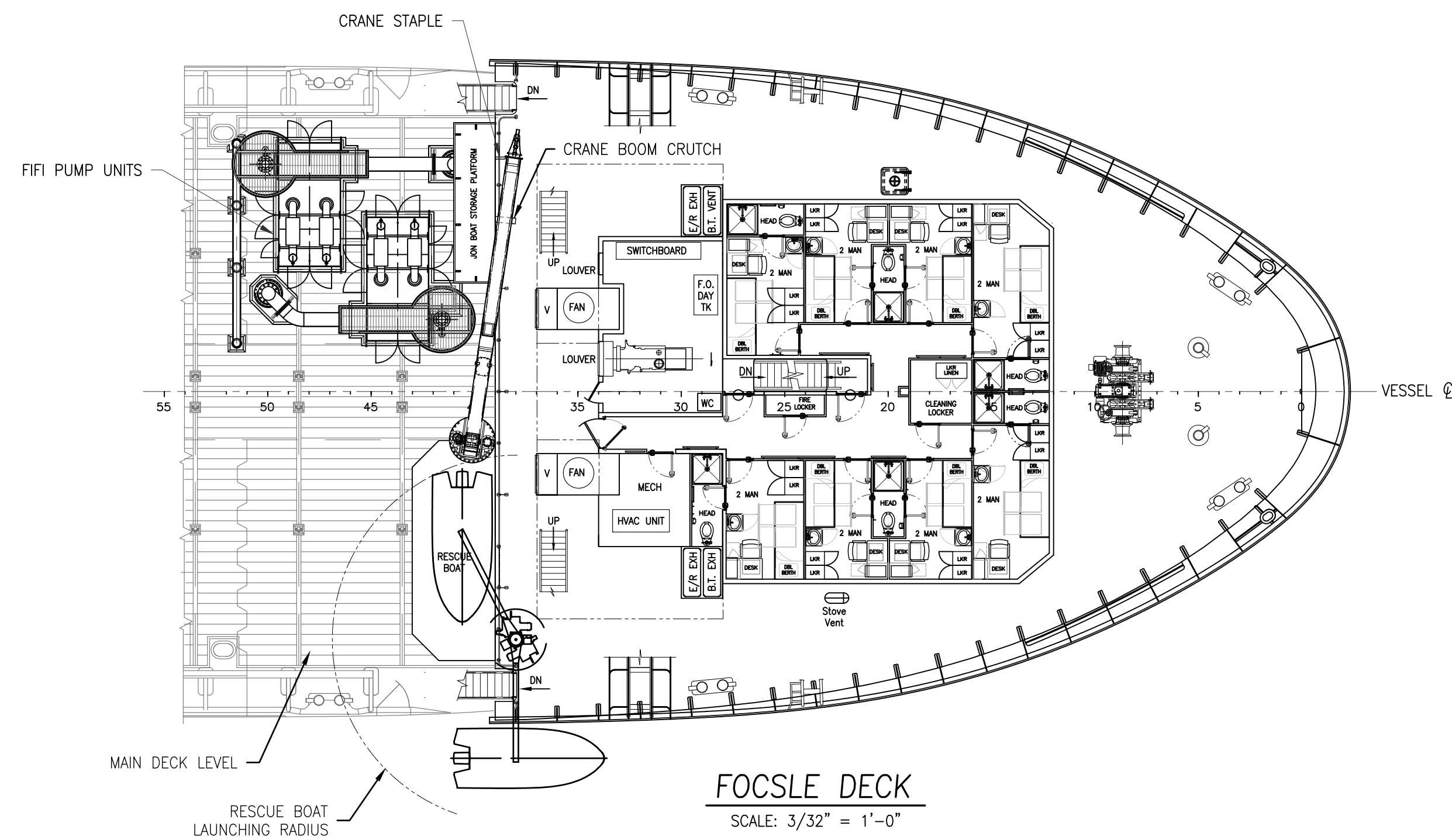
8 7 6 5 4 3 2 1



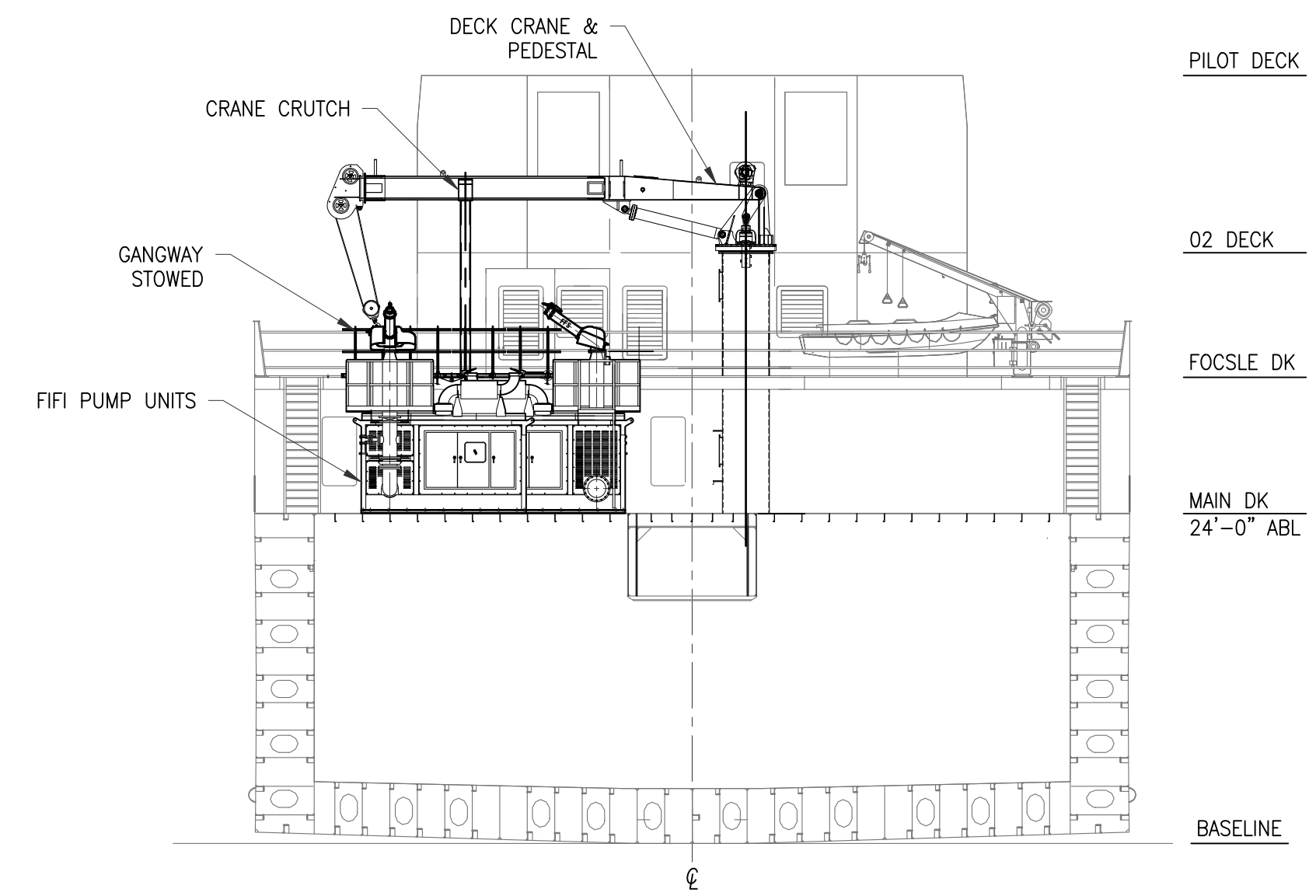
**PILOT HOUSE**  
SCALE: 3/32" = 1'-0"



**02 DECK**  
SCALE: 3/32" = 1'-0"



**FOCLE DECK**  
SCALE: 3/32" = 1'-0"



**SECTION 2-14B**

FR.38 / LKG FWD  
CRANE & GANGWAY SHOWN IN STOWED POSITION  
SCALE: 3/32" = 1'-0"

THIS DRAWING, DESIGN CONCEPT AND SPECIFICATIONS ARE THE PROPERTY OF HORNBECK OFFSHORE SERVICES AND ARE FURNISHED ON A CONFIDENTIAL BASIS WITH AN EXPRESSED UNDERSTANDING THAT THEY WILL NOT BE COPIED IN ANY MANNER USED FOR MANUFACTURE, SALE, TRANSFER, NOR USED TO THE DETRIMENT OF SAID FIRM WITHOUT WRITTEN PERMISSION. HOS

OUTBOARD PROFILE & GENERAL ARRANGEMENT		SIZE
TASK No. 7319	DRAWING No. 1.001	D
HULL No. 1990	SY: VTHM	REV. 6
SCALE: AS NOTED DATE: 02/21/19 SHEET 2 OF 2		