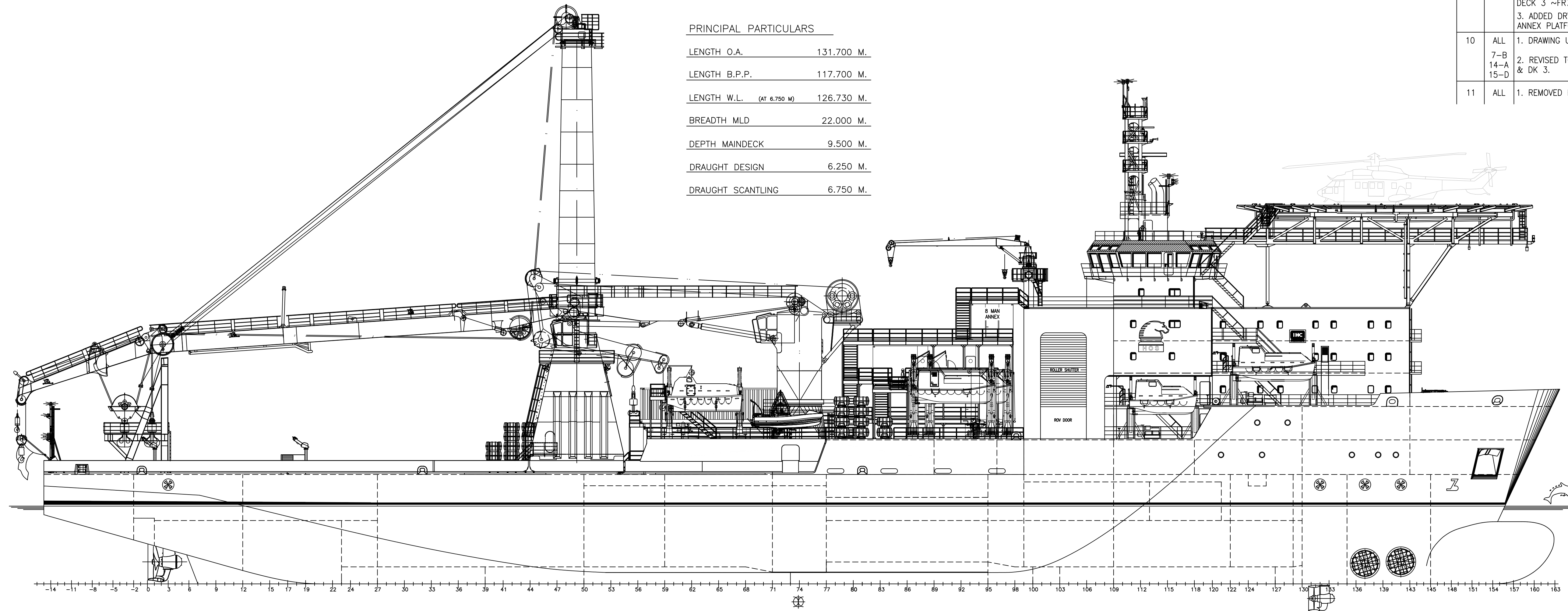


8 7 6 5 4 3 2 1

REVISIONS				
REV	ZONE	DESCRIPTION	DATE	BY
1	-	1. ADDED 3 TEMP. GENERATORS	09/23/14	RJW
2	-	1. ADDED LIFEBOATS. 2. MOVED LIFERAFTS & UPDATED WALKWAYS IN DRAWING.	01/06/15	DDH
3	-	1. ADDED WALKWAY ABOVE OFFICE ANNEX W/ STAIRS TO OB DECK & TOP OF TIER 3.	07/07/15	DDH
4	-	1. REMOVED 300 KW GENSETS AND SWITCHBOARDS FROM DECK 3.	07/17/15	CR
5	-	1. REMOVED 8 MAN CONTAINER, WALKWAYS TO DK 07 AND GRATING. 2. REPLACED MOB WITH FRC. 3. EXTENDED DECK 4 (STBD ONLY).	08/10/15	RW
6	-	1. UPDATED MESS HALL ARRANGEMENT, ELIMINATED GYM. 2. ADDED 8 PERSON CONTAINER, WALKWAYS TO DK 08 AND GRATING. 3. RELOCATED LIFERAFTS PER AS-BUILT.	09/30/15	RJW
7	-	1. INSTALL 2 X 36 PERSON LIFEBOATS.	06/22/16	PL
8	-	1. INSTALLED 24 MAN AND 12 MAN ACCOMMODATION MODULES.	07/18/18	MS
9	-	1. SEGREGATED CREW REC ROOM AND CREATED CLIENT OFFICE WITH 5 WORKSTATIONS DECK 4-D FWD. 2. ADDED FREEZER, REFER & TRASH COMPACTOR TO DECK 3 ~FR77. 3. ADDED DRY STORES CONTAINERS TO DECK 4 AFT ANNEX PLATFORM ~FR62.	08/01/18	SM
10	ALL 7-B 14-A 15-D	1. DRAWING UPDATED TO CURRENT HOS FORMAT. 2. REVISED TO ADD FIFI SYSTEM ITEMS, OBP, DK 1 & DK 3.	01/28/20	SMM
11	ALL	1. REMOVED REEFER & FREEZER UNITS FROM DK 3.	02/28/20	MGS

PRINCIPAL PARTICULARS

LENGTH O.A.	131.700 M.
LENGTH B.P.P.	117.700 M.
LENGTH W.L. (AT 6.750 M)	126.730 M.
BREADTH MLD	22.000 M.
DEPTH MAINDECK	9.500 M.
DRAUGHT DESIGN	6.250 M.
DRAUGHT SCANTLING	6.750 M.



OUTBOARD PROFILE

1 X 8 MAN MODULE
 1 X 12 MAN MODULE
 3- 24 MAN ANNEXES
 1- RECREATION / EXERCISE ANNEX
 8,127 FT² (755 m²) CLEAR DECK
 (AREA DOES NOT INCLUDE LANDING ABOVE ANNEXES)

HOS 430 MPSV / HOS IRON HORSE

THIS DRAWING, DESIGN CONCEPT AND SPECIFICATIONS ARE THE PROPERTY OF HORNBECK OFFSHORE SERVICES AND ARE FURNISHED ON A CONFIDENTIAL BASIS WITH AN EXPRESSED UNDERSTANDING THAT THEY WILL NOT BE COPIED, IN ANY MANNER, USED FOR MANUFACTURE, SOLD, TRANSFERRED, NOR USED TO THE DETRIMENT OF SAID FIRM WITHOUT WRITTEN PERMISSION. HOS ©

HORNBECK OFFSHORE SERVICES

DRAWN BY: S. MAUL
 CHECKED BY: M. STANSBURY
 APPROVED BY: J. GUIDRY

432'-1" X 72'-1" X 31'-2"

OUTBOARD PROFILE & GENERAL ARRANGEMENT

SCALE: 1:200
 DATE: 01/28/20
 SHEET 1 OF 3

SIZE D/M
 REV. 11

8 7 6 5 4 3 2 1

16

15

14

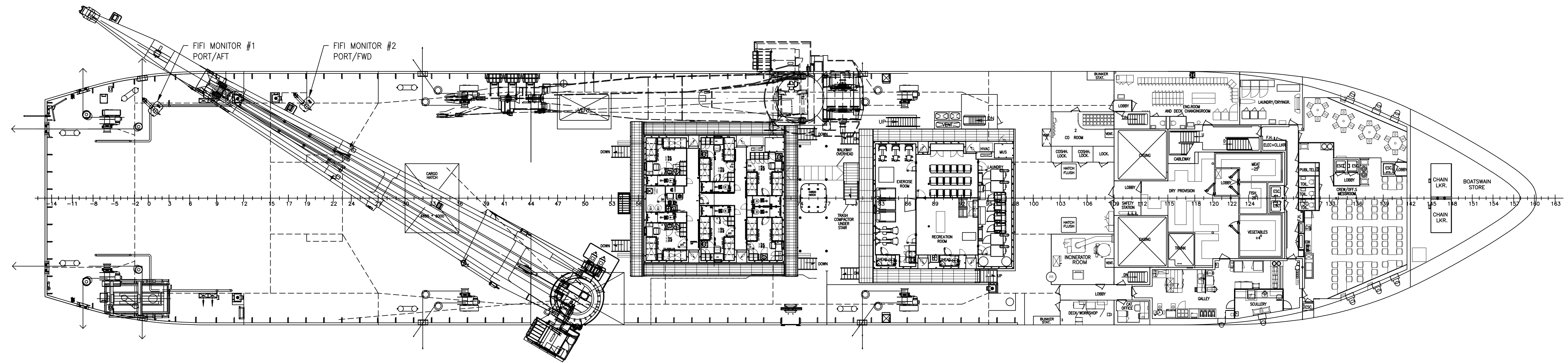
13

12

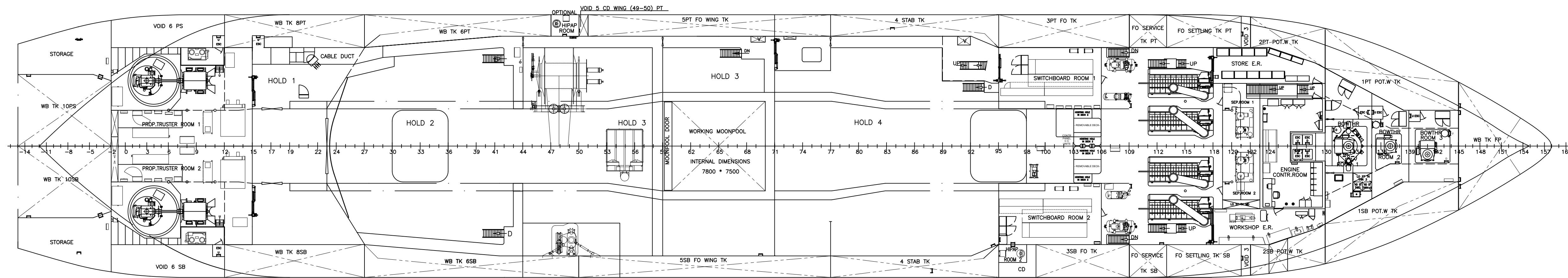
11

10

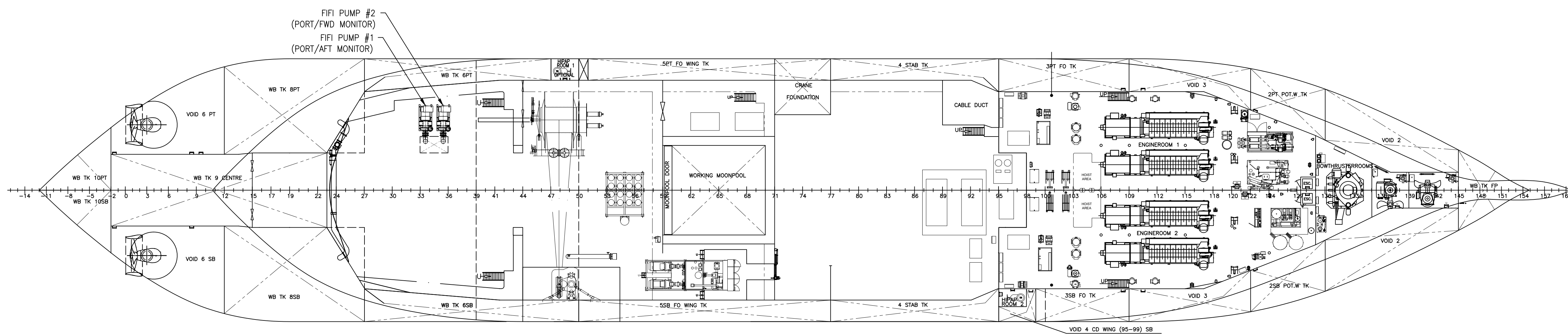
9



DECK 3 - MAIN DECK



DECK 2 - TWEEN DECK



DECK 1 - TANK TOP

<p>HORNBECK OFFSHORE SERVICES</p>	<p>THIS DRAWING, DESIGN CONCEPT AND SPECIFICATIONS ARE THE PROPERTY OF HORNBECK OFFSHORE SERVICES AND ARE FURNISHED ON A CONFIDENTIAL BASIS WITH AN EXPRESSED UNDERSTANDING THAT THEY WILL NOT BE COPIED IN ANY MANNER USED FOR MANUFACTURE, SOLD, TRANSFERRED, NOR USED TO THE DETRIMENT OF SAS FIRM WITHOUT WRITTEN PERMISSION.</p>		<p>OUTBOARD PROFILE & GENERAL ARRANGEMENT</p>	<p>SIZE D/M</p>
	<p>TASK No. 7040</p>	<p>DRAWING No. 1.001</p>	<p>SCALE: 1:200</p>	<p>REV. 11</p>
	<p>HULL No. 717</p>	<p>SY: IHC</p>	<p>DATE: 01/28/20</p>	<p>SHEET 2 OF ?</p>

16

15

14

13

12

11

10

9

24

23

22

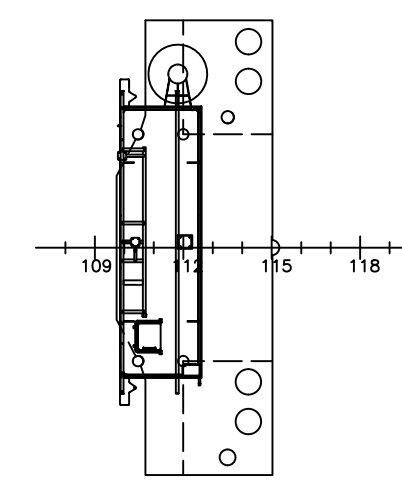
21

20

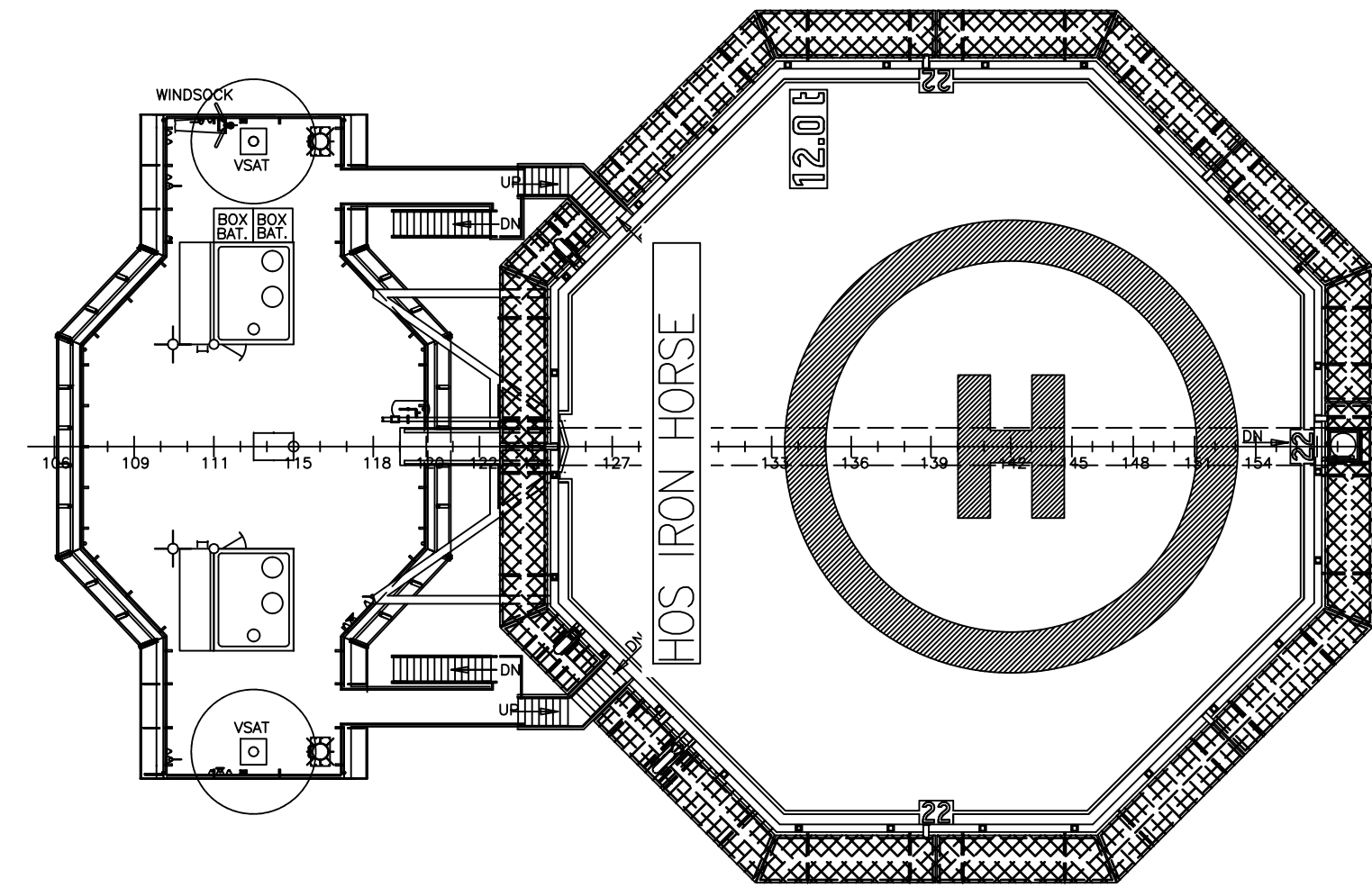
19

18

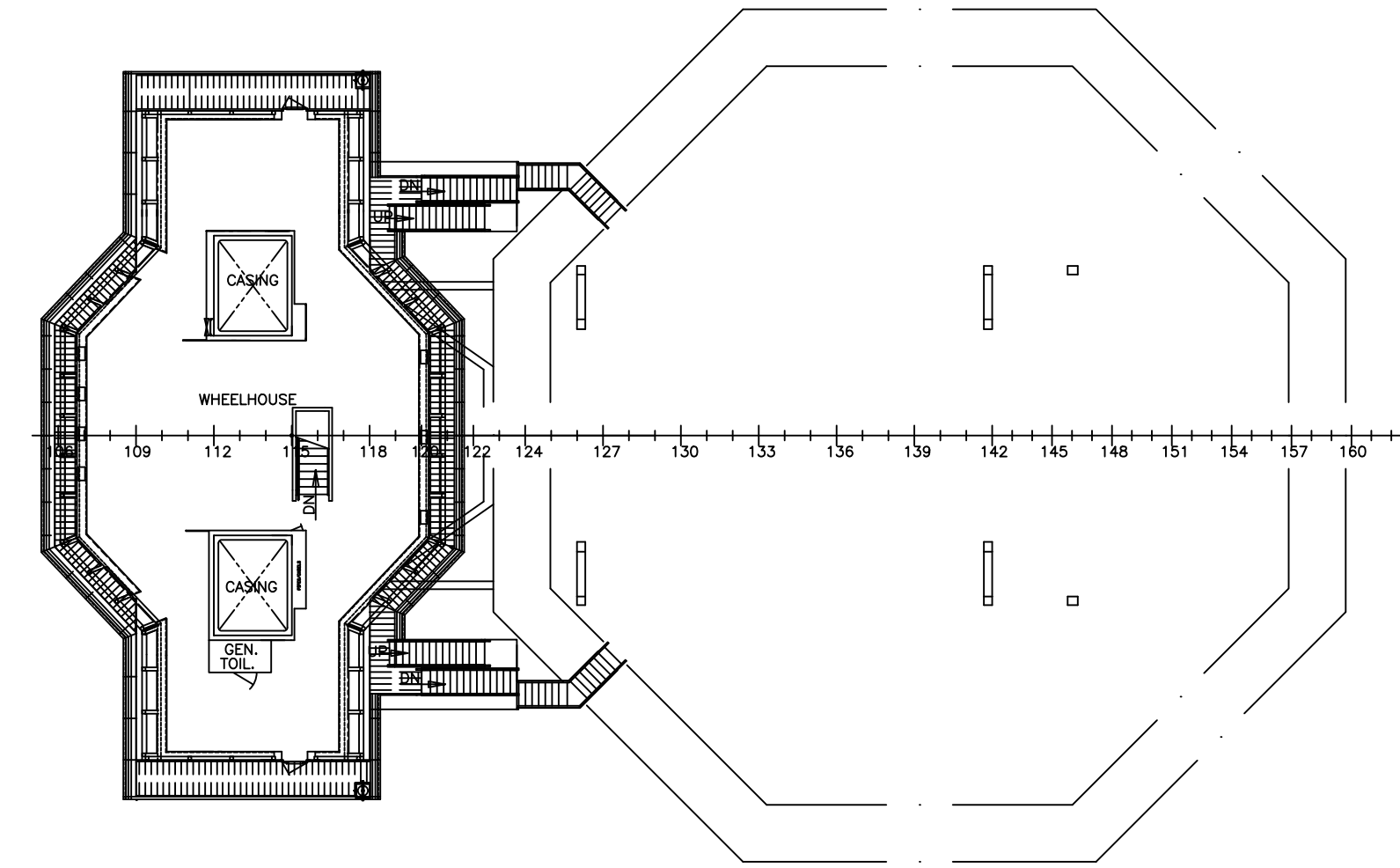
17



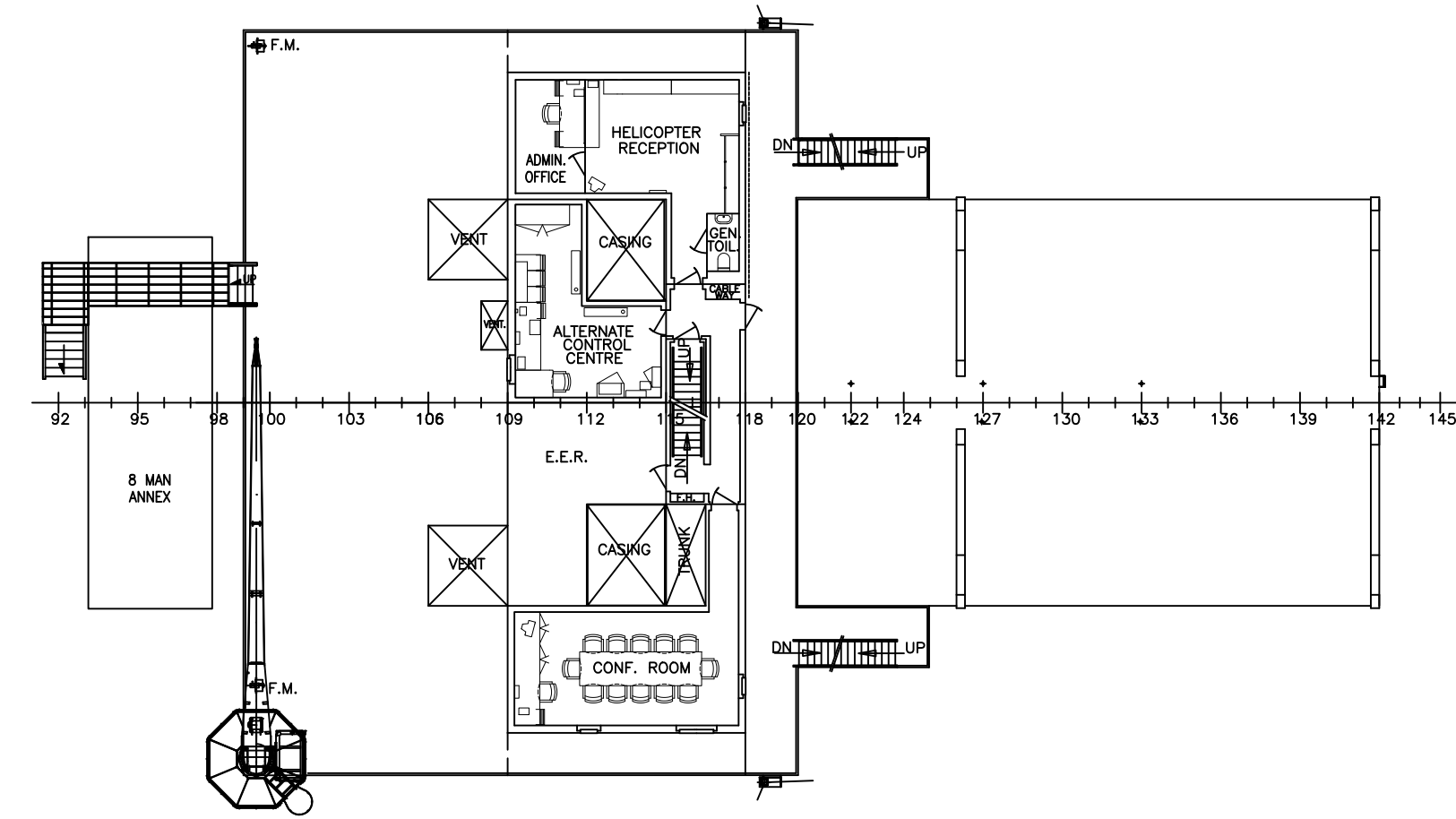
MAST



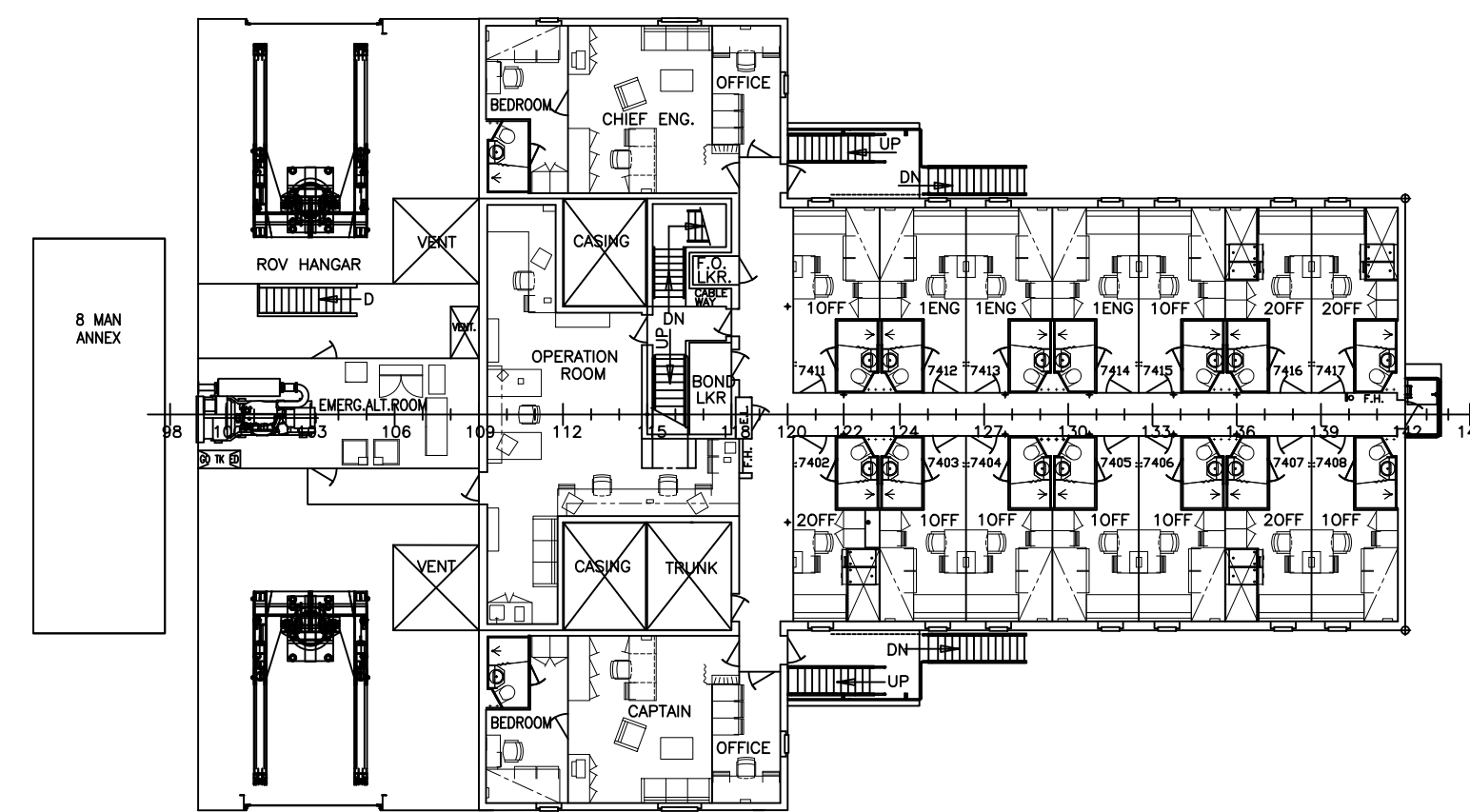
DECK 10 - TOP DECK



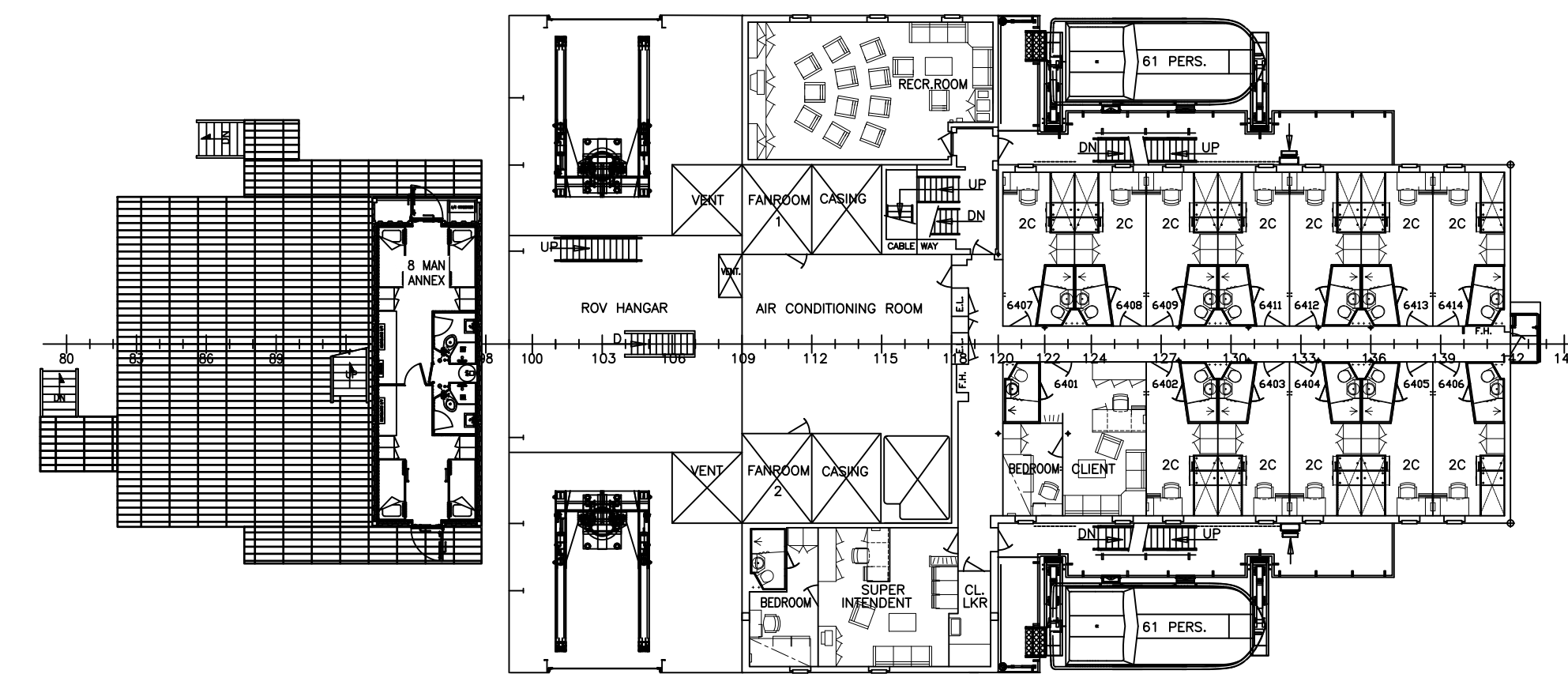
DECK 9 - BRIDGE DECK



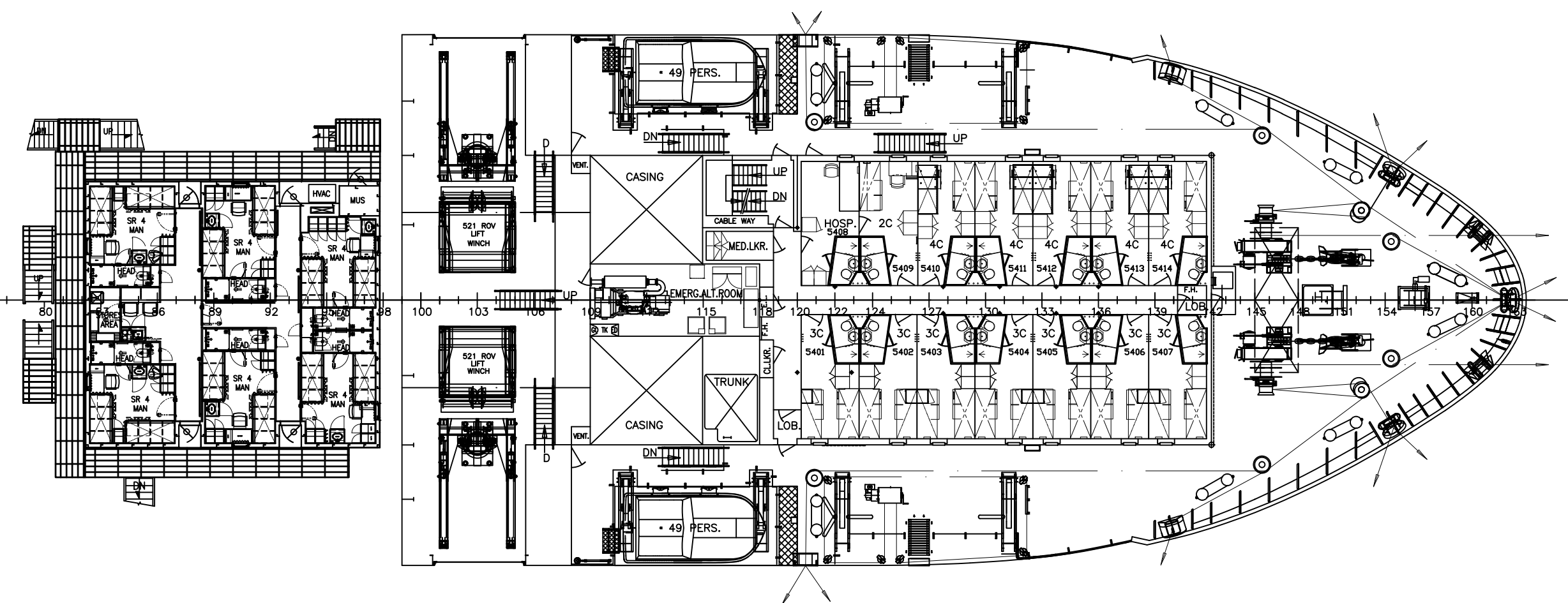
DECK 8



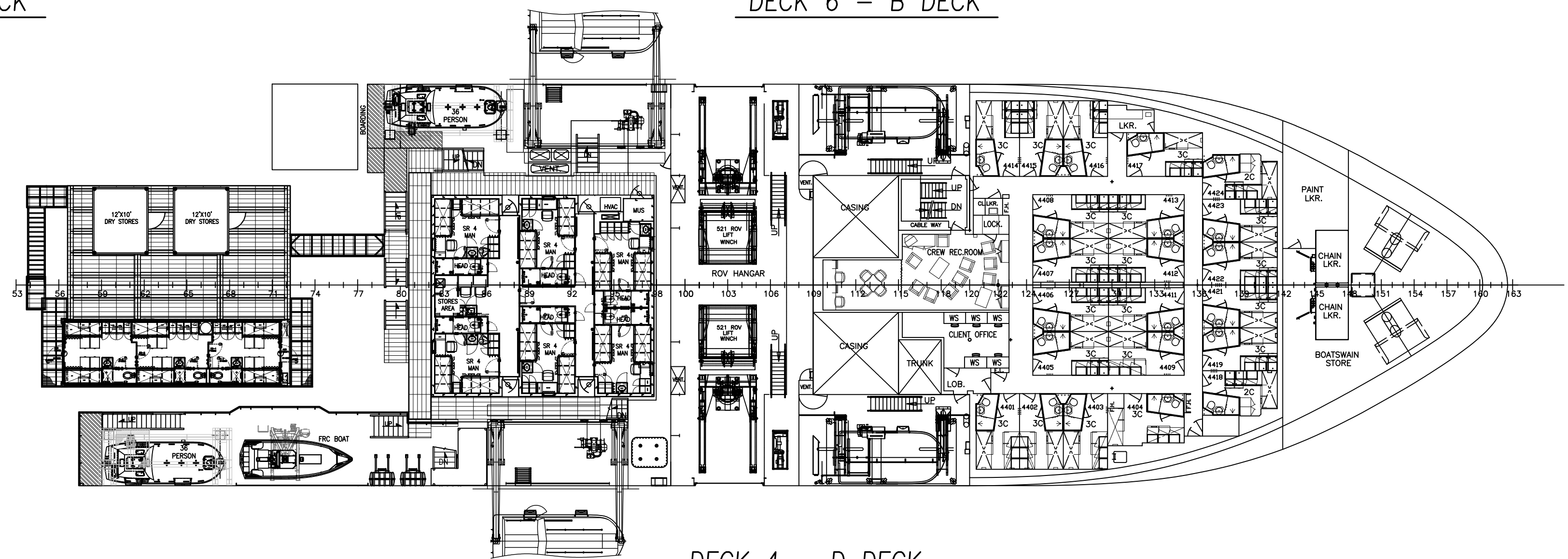
DECK 7 - A DECK



DECK 6 - B DECK



DECK 5 - FOCLE - C DECK



DECK 4 - D DECK

	<small>THIS DRAWING, DESIGN CONCEPT AND SPECIFICATIONS ARE THE PROPERTY OF HORNBECK OFFSHORE SERVICES AND ARE FURNISHED ON A CONFIDENTIAL BASIS WITH AN EXPRESSED UNDERSTANDING THAT THEY WILL NOT BE COPIED IN ANY MANNER USED FOR MANUFACTURE, SOLD, TRANSFERRED, NOR USED TO THE DETRIMENT OF SAS, FIRM WITHOUT WRITTEN PERMISSION.</small>		OUTBOARD PROFILE & GENERAL ARRANGEMENT		<small>SIZE</small> D/M
	<small>TASK No.</small> 7040	<small>DRAWING No.</small> 1.001	<small>SCALE:</small> 1:200	<small>DATE:</small> 01/28/20	<small>REV.</small> 11
	<small>HULL No.</small> 717	<small>SY:</small> IHC	<small>SHEET</small> 3 OF ?		

24

23

22

21

20

19

18

17