

**PRINCIPAL PARTICULARS**

LOA	292'-0"
LBP - LWL	280'-0"
BEAM	64'-0"
DEPTH	24'-6"
LOADLINE DRAFT	19'-11"
GENERATORS	(4) X 1825KW @ 1,800 RPM (WATER-COOLED), (2) X 200KW (AIR COOLED)
TOTAL KILOWATTS	7,300 KW @ 690 VAC
MAIN PROPULSION	(2) X 2,500KW @ 620 VAC @ 1,000 RPM (6,700HP TOTAL) FIXED PITCH VFD Z-DRIVE IN NOZZLES
BOW THRUSTERS	(2) X 1,180 KW @ 620 VAC @ 1,200 RPM (3,160HP TOTAL) FIXED PITCH VFD/REVERSING MOTORS
FIRE MONITORS	(2) X 5284 GPM/ (495KW @ 690 VAC) 665HP/394' REACH - REMOTE CONTROLLED FIRE MONITORS
REGULATORY	USCG SUB I & L /SOLAS/ABS <input checked="" type="checkbox"/> A1, OFFSHORE SERVICE VESSEL, <input checked="" type="checkbox"/> AMS, DPS-2, ENVIRO, GP <input checked="" type="checkbox"/> ACCU, UWILD, Fifi 1, <input checked="" type="checkbox"/> OSR-C2, CRC, ACP

**TANK CAPACITIES**

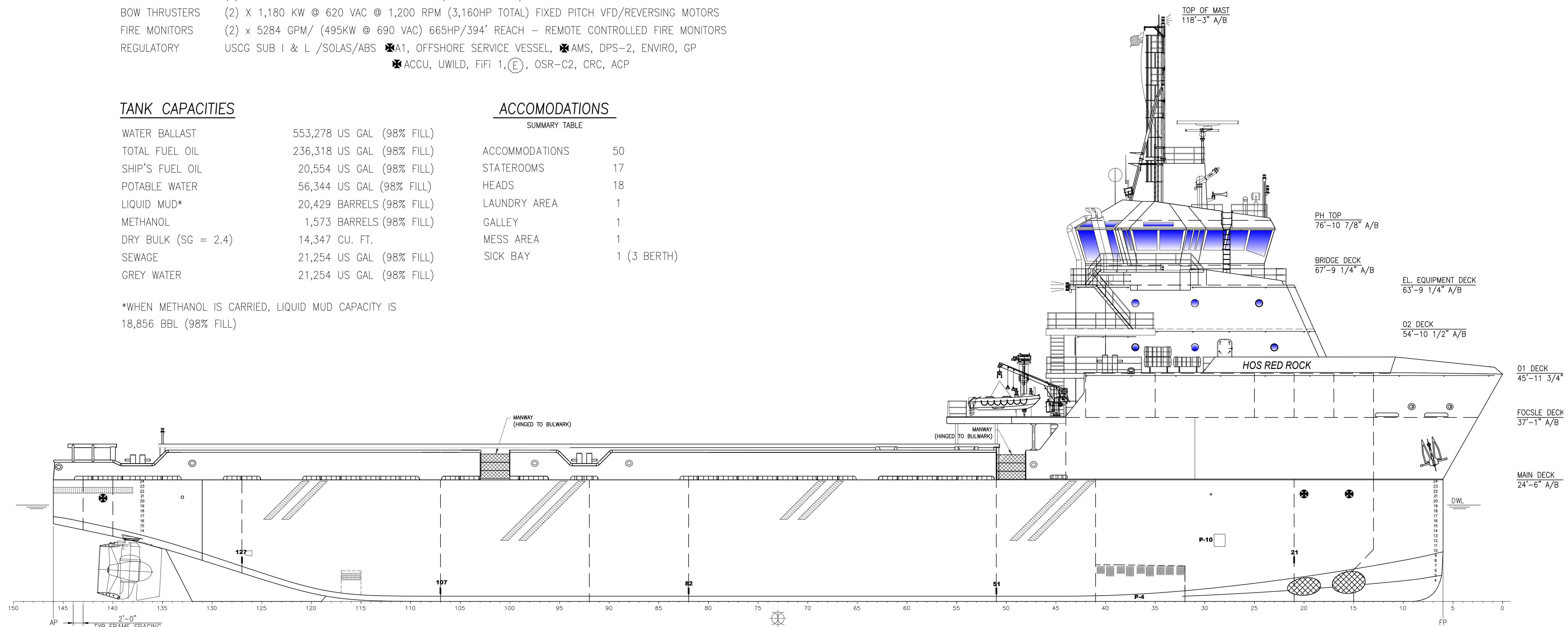
WATER BALLAST	553,278 US GAL (98% FILL)
TOTAL FUEL OIL	236,318 US GAL (98% FILL)
SHIP'S FUEL OIL	20,554 US GAL (98% FILL)
POTABLE WATER	56,344 US GAL (98% FILL)
LIQUID MUD*	20,429 BARRELS (98% FILL)
METHANOL	1,573 BARRELS (98% FILL)
DRY BULK (SG = 2.4)	14,347 CU. FT.
SEWAGE	21,254 US GAL (98% FILL)
GREY WATER	21,254 US GAL (98% FILL)

\*WHEN METHANOL IS CARRIED, LIQUID MUD CAPACITY IS 18,856 BBL (98% FILL)

**ACCOMODATIONS**

SUMMARY TABLE

ACCOMMODATIONS	50
STATEROOMS	17
HEADS	18
LAUNDRY AREA	1
GALLEY	1
MESS AREA	1
SICK BAY	1 (3 BERTH)



**OUTBOARD PROFILE**

**HOSMAX 300 / HOS RED ROCK**

THIS DRAWING, DESIGN CONCEPT AND SPECIFICATIONS ARE THE PROPERTY OF HORNBECK OFFSHORE SERVICES AND ARE FURNISHED ON A CONFIDENTIAL BASIS WITH AN EXPRESSED UNDERSTANDING THAT THEY WILL NOT BE COPIED IN ANY MANNER USED FOR MANUFACTURE, SOLD, TRANSFERRED, NOR USED TO THE DETRIMENT OF SAID FIRM WITHOUT WRITTEN PERMISSION. HOS ©  
HORNBECK OFFSHORE SERVICES

DRAWN BY: S. MAUL	292'-0" X 64'-0" X 24'-6"		
CHECKED BY: M. STANSBURY	OUTBOARD PROFILE & GENERAL ARRANGEMENT		
APPROVED BY: J. GUIDRY	TASK No. 7949	DRAWING No. 1,001	SCALE: 3/32"=1'-0" DATE: 01/18/21 SHEET 1 OF 4
	HULL No. 202	SY: ESG	REV. 4

D

D

C

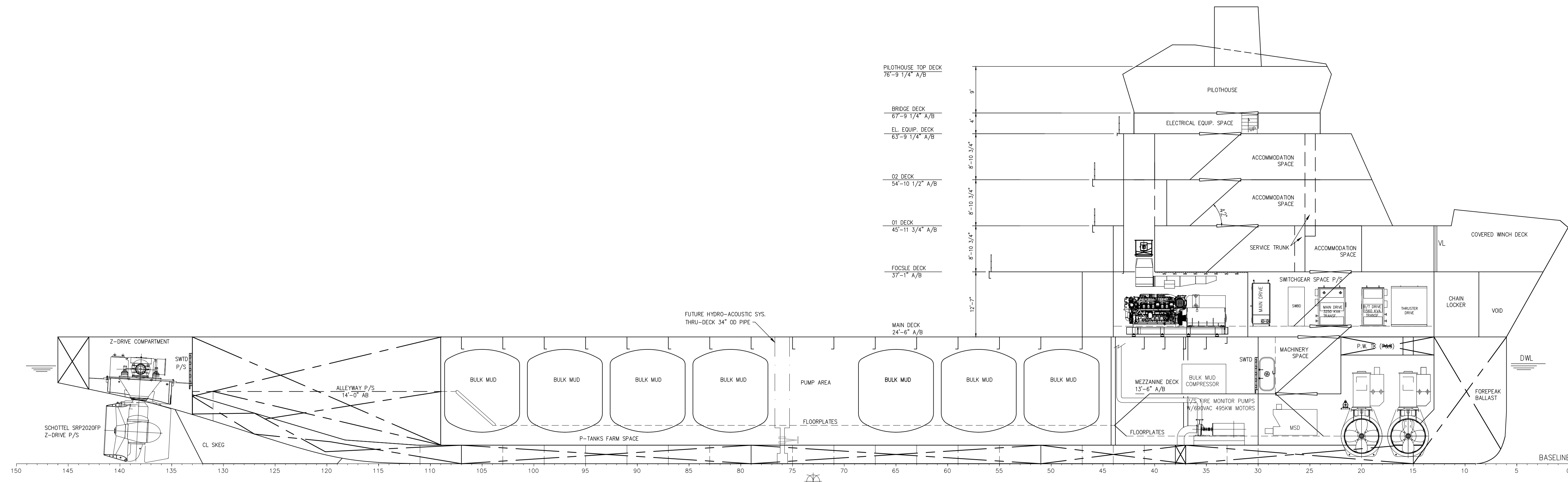
C

B

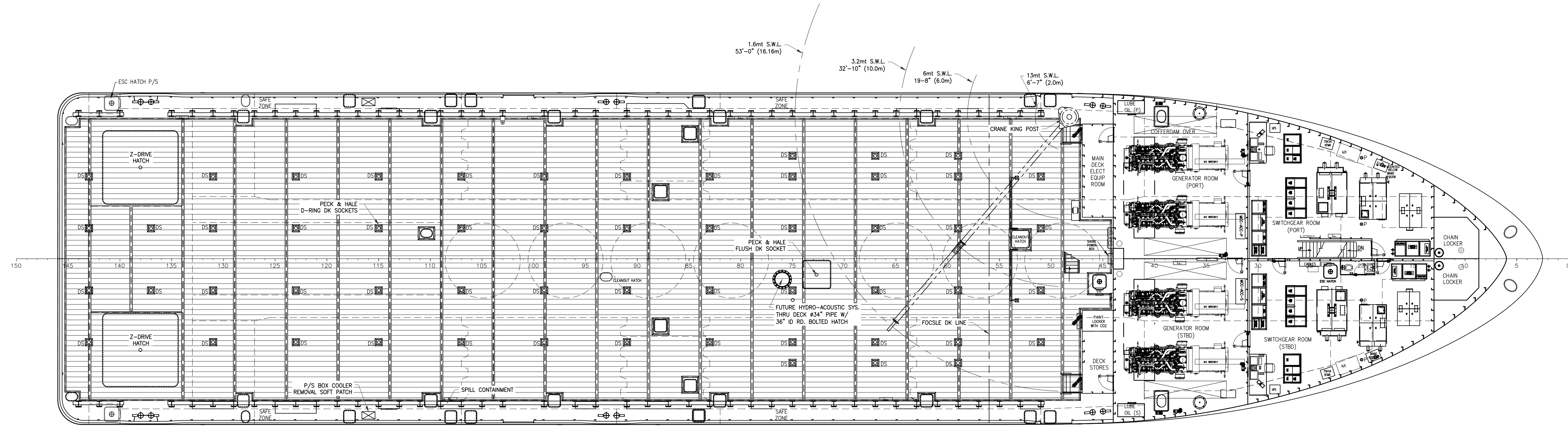
B

A

A



INBOARD PROFILE



MAIN DECK

<p><b>HORNBECK OFFSHORE SERVICES</b></p>	<p>THIS DRAWING, DESIGN CONCEPT AND SPECIFICATIONS ARE THE PROPERTY OF HORNBECK OFFSHORE SERVICES AND ARE FURNISHED ON A CONFIDENTIAL BASIS WITH AN EXPRESSED UNDERSTANDING THAT THEY WILL NOT BE COPIED IN ANY MANNER USED FOR MANUFACTURE, SALE, TRANSFERRED, NOR USED TO THE DETRIMENT OF SAID FIRM WITHOUT WRITTEN PERMISSION.</p>			<p>OUTBOARD PROFILE &amp; GENERAL ARRANGEMENT</p>	<p>SIZE D</p>
	<p>TASK No. 7949</p>	<p>DRAWING No. 1.001</p>	<p>SCALE: 3/32"=1'-0"</p>	<p>DATE: 01/18/21</p>	<p>REV. 4</p>
	<p>HULL No. 202</p>	<p>SY: ESG</p>	<p>SHEET 2 OF 4</p>		

D

D

C

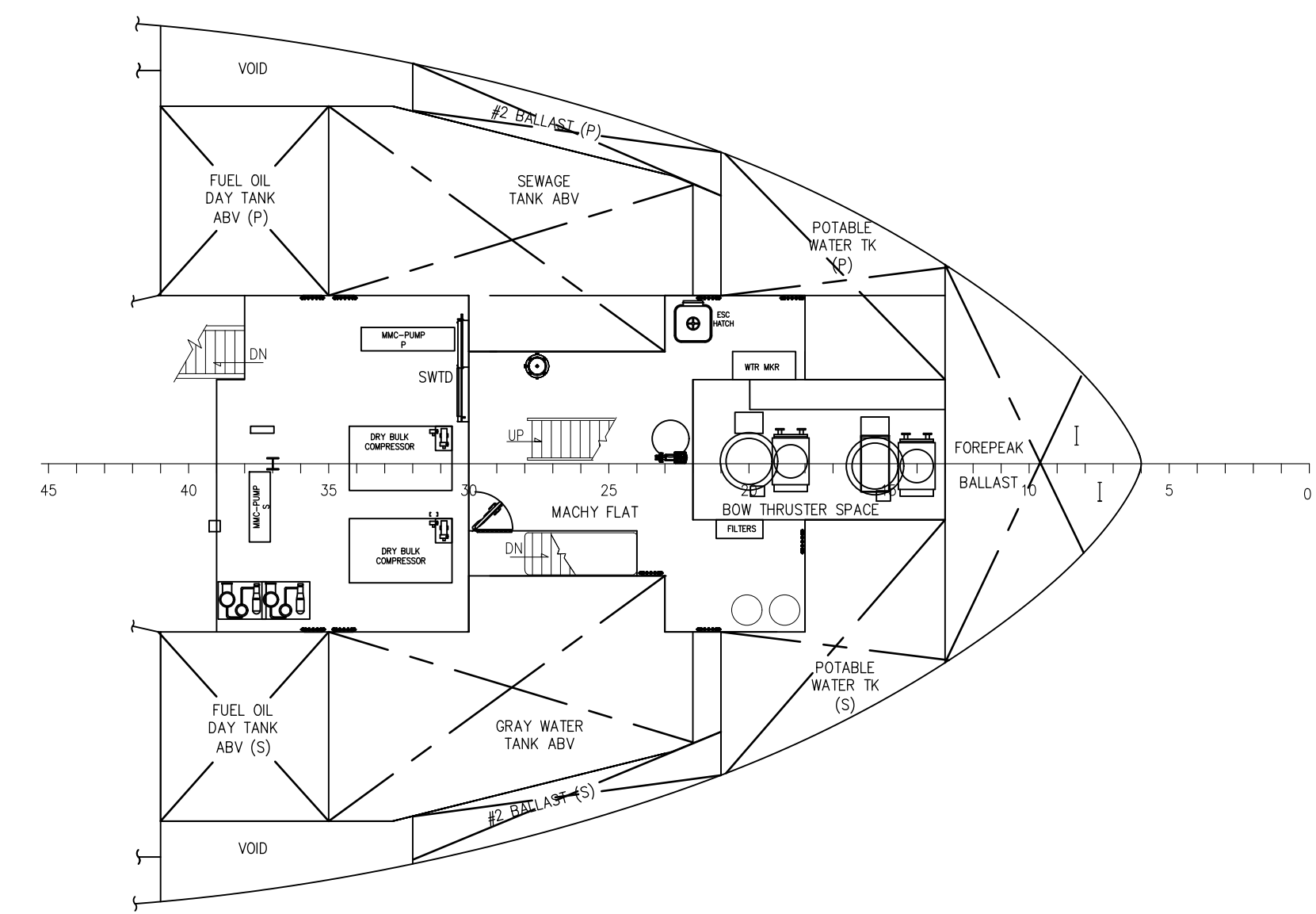
C

B

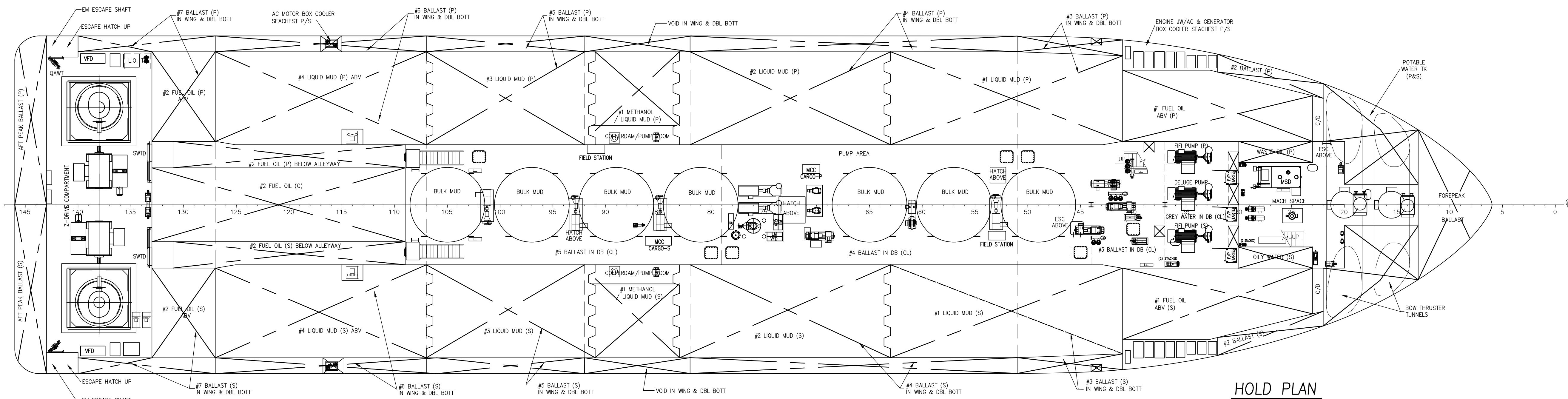
B

A

A

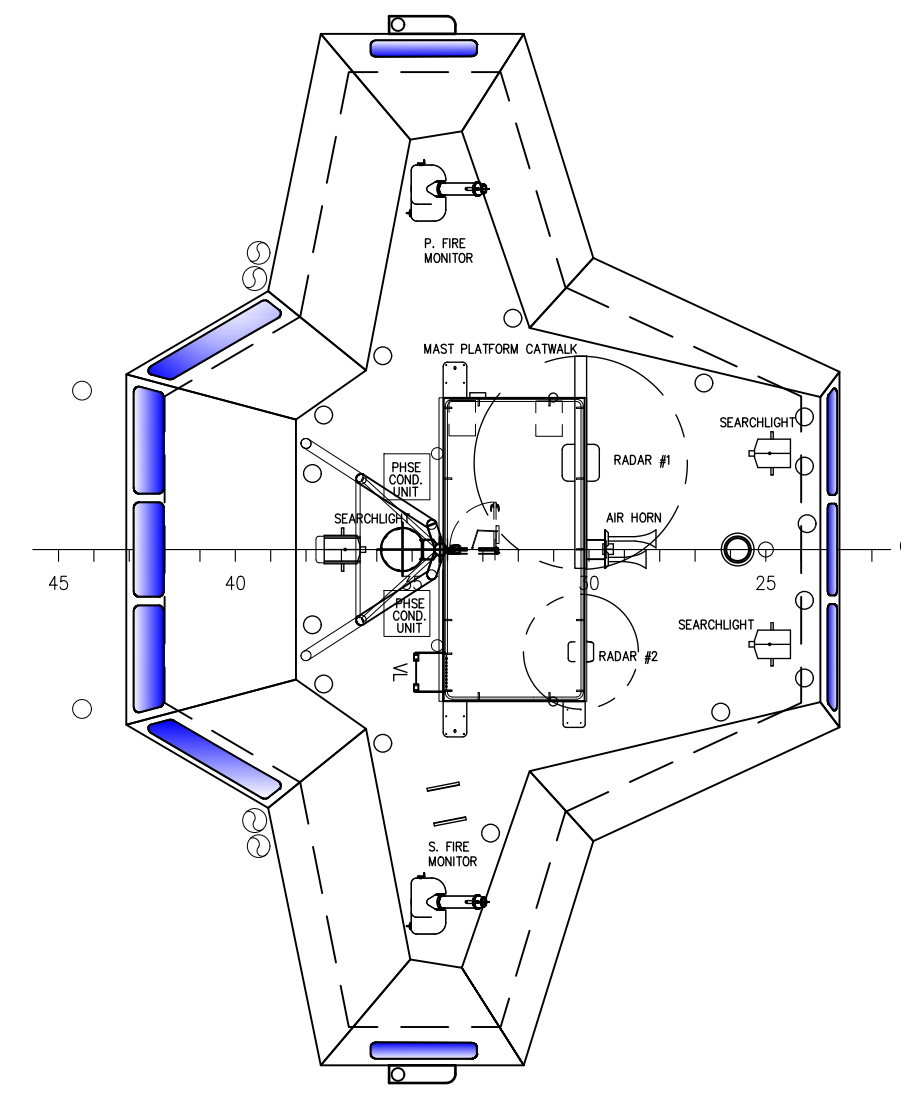


MEZZANINE FLAT

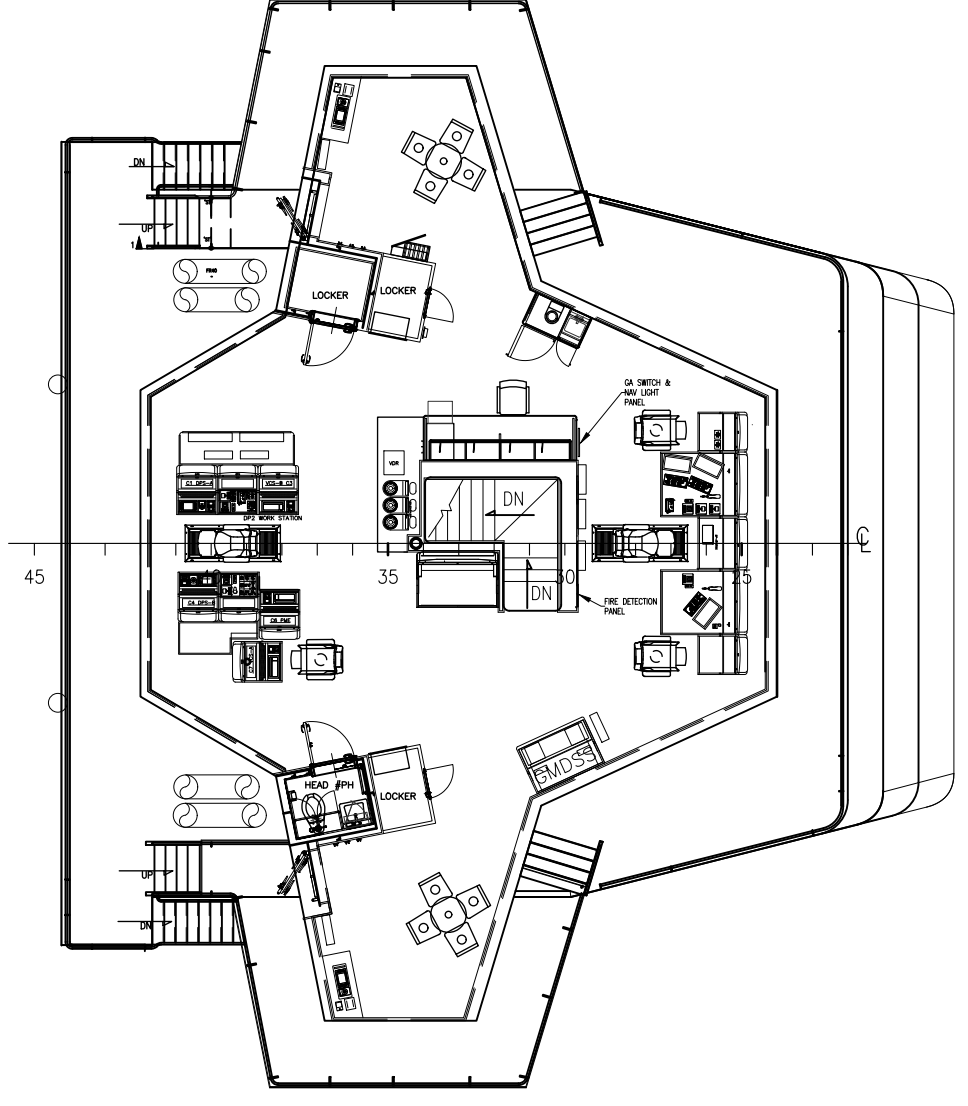


HOLD PLAN

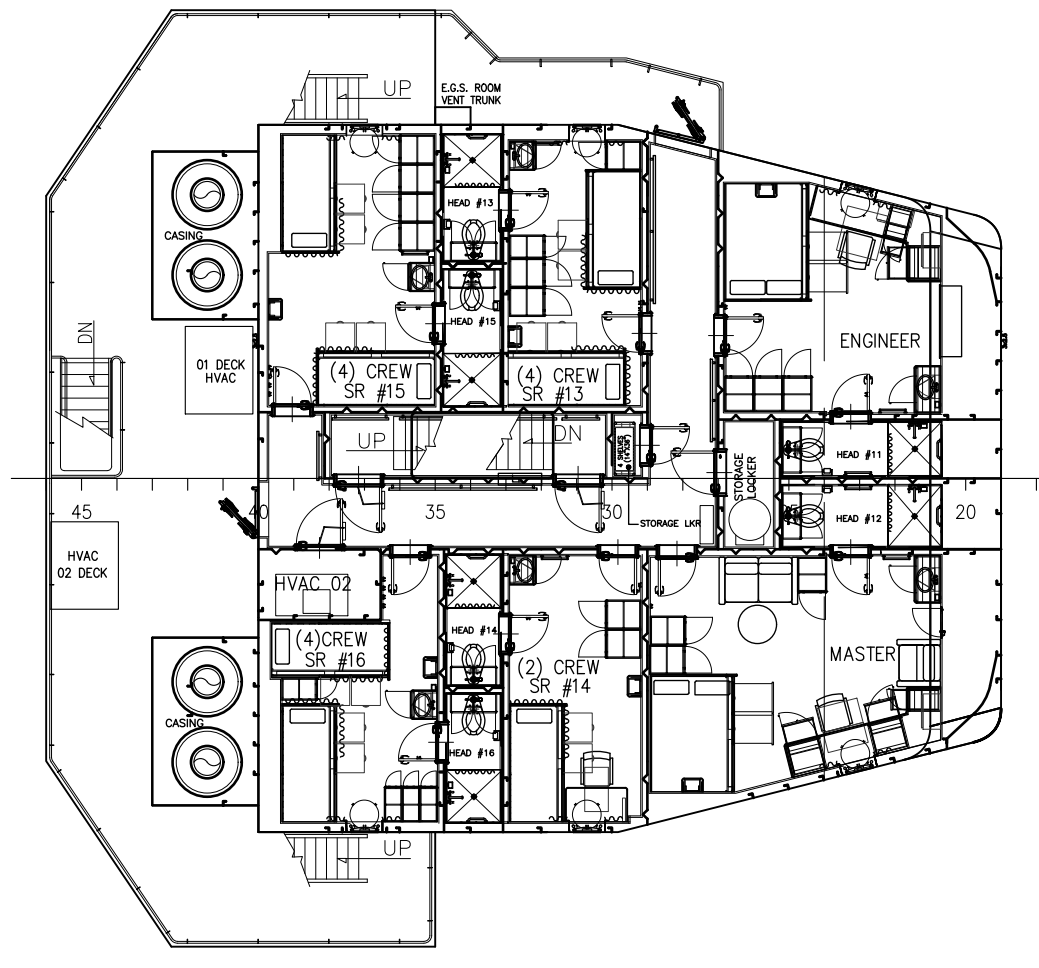
	THIS DRAWING, DESIGN CONCEPT AND SPECIFICATIONS ARE THE PROPERTY OF HORNBECK OFFSHORE SERVICES AND ARE FURNISHED ON A CONFIDENTIAL BASIS WITH AN EXPRESSED UNDERSTANDING THAT THEY WILL NOT BE COPIED IN ANY MANNER USED FOR MANUFACTURE, SALE, TRANSFER, NOR USED TO THE DETRIMENT OF SAID FIRM WITHOUT WRITTEN PERMISSION.			OUTBOARD PROFILE & GENERAL ARRANGEMENT TASK No. 7949 HULL No. 202	DRAWING No. 1.001 SY: ESG	SCALE: 3/32"=1'-0" DATE: 01/18/21 SHEET 3 OF 4	SIZE D
	REV. 4						



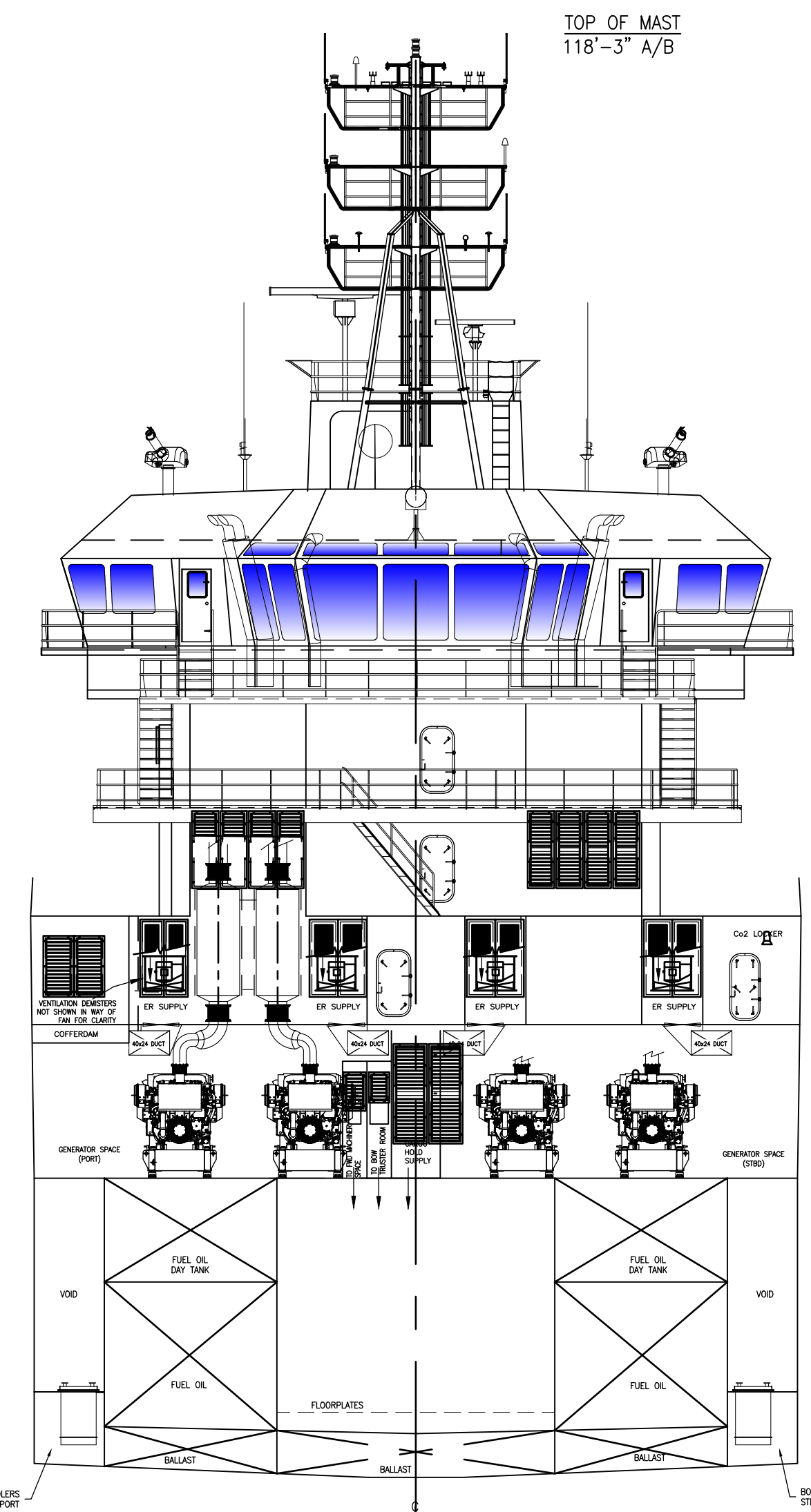
PILOT HOUSE TOP DECK



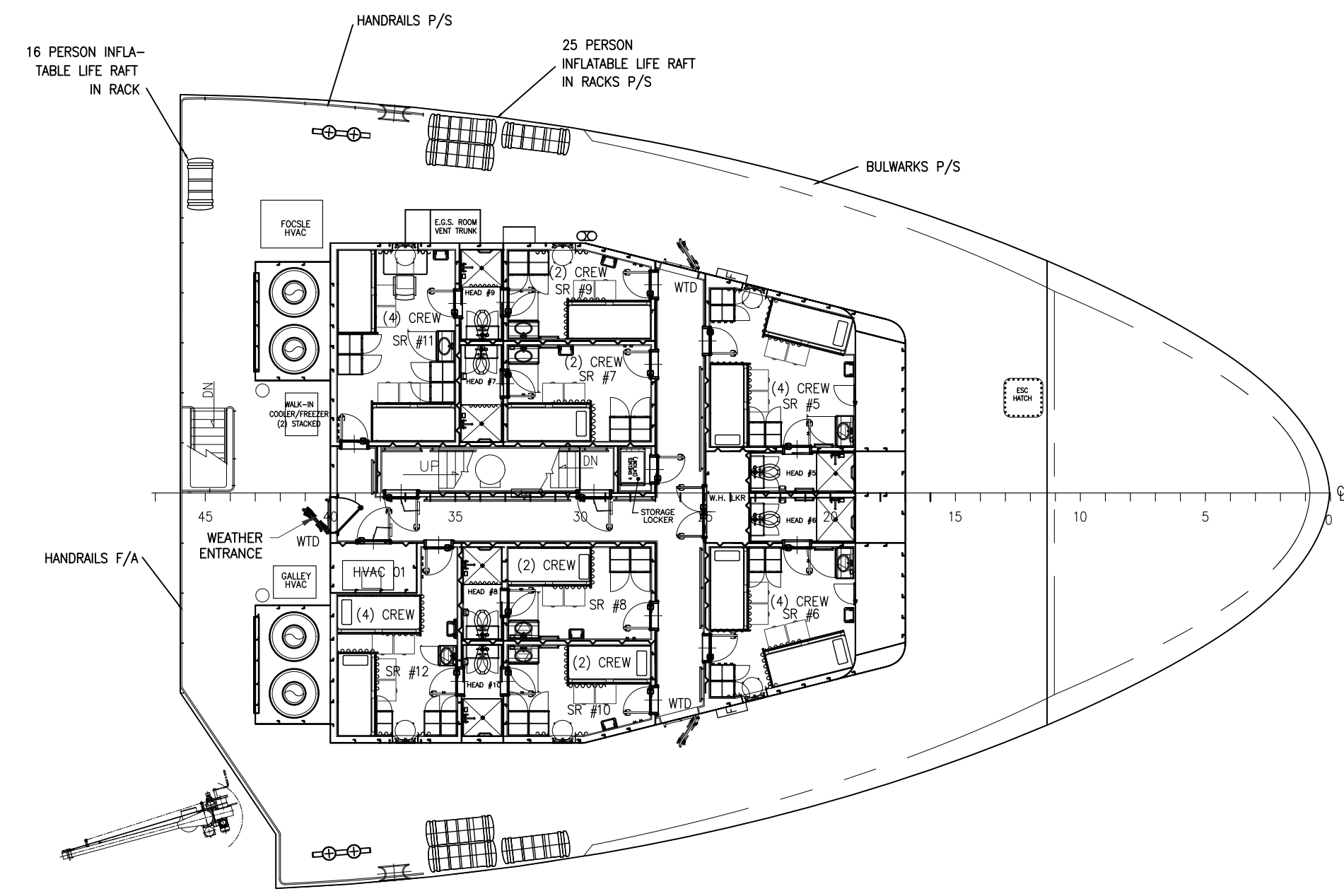
BRIDGE DECK



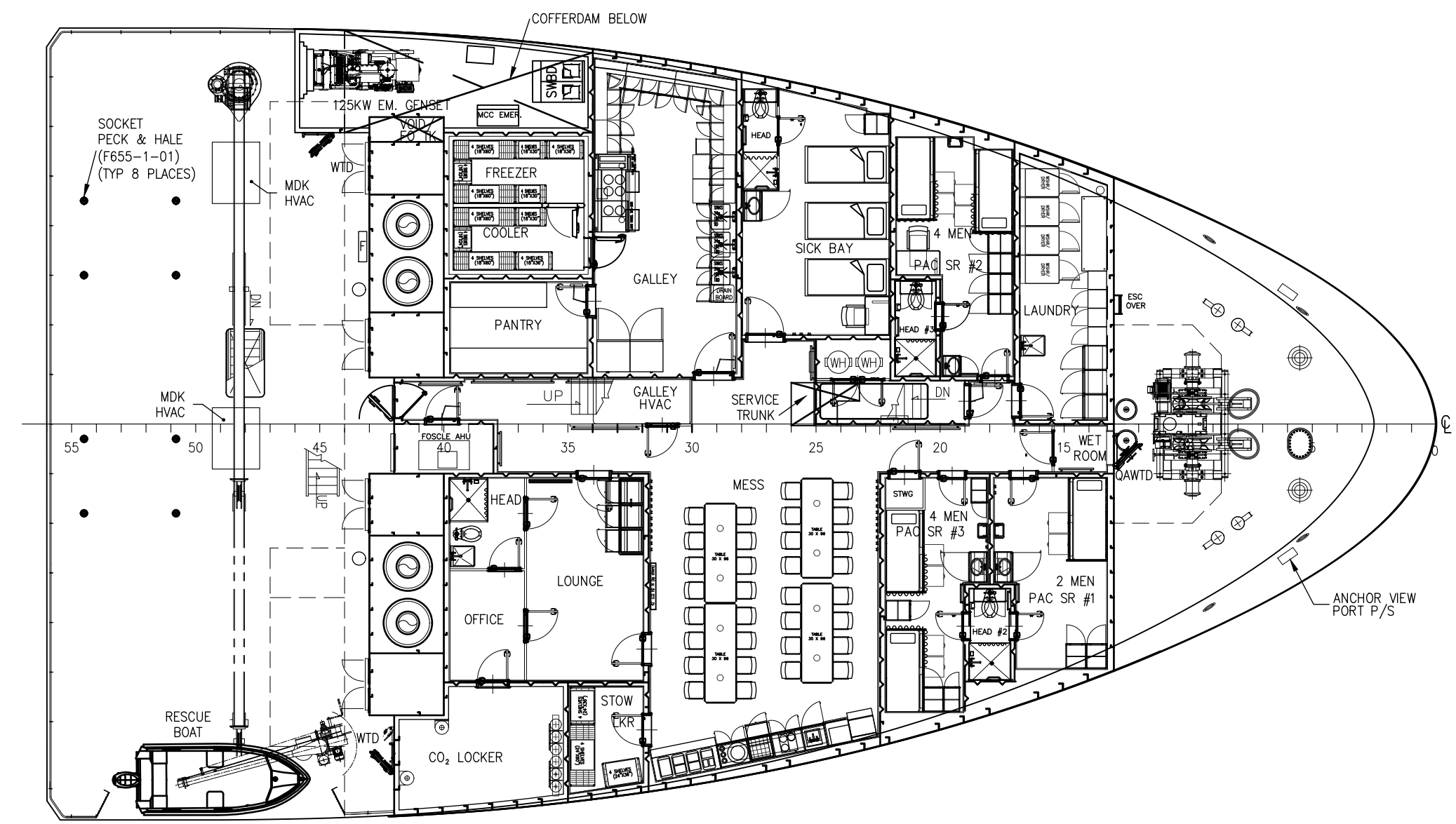
02 DECK  
15 BERTHS



SECTION ABOUT FR41  
LKG FWD



01 DECK  
15 BERTHS



FOSCLE DECK  
14 BERTHS (PAC)  
3 BERTH (SICK BAY)

	THIS DRAWING, DESIGN CONCEPT AND SPECIFICATIONS ARE THE PROPERTY OF HORNBECK OFFSHORE SERVICES AND ARE FURNISHED ON A CONFIDENTIAL BASIS WITH AN EXPRESSED UNDERSTANDING THAT THEY WILL NOT BE COPIED IN ANY MANNER USED FOR MANUFACTURING, SELLING, TRANSFERRED, NOR USED TO THE DETRIMENT OF SAID FIRM WITHOUT WRITTEN PERMISSION.			OUTBOARD PROFILE & GENERAL ARRANGEMENT	SIZE D
	TASK No. 7949	DRAWING No. 1.001	SCALE: 3/32"=1'-0"	DATE: 01/18/21	REV. 4
	HULL No. 202	SY: ESG	SHEET 4 OF 4		
	HORNBECK OFFSHORE SERVICES				