

**PRINCIPAL PARTICULARS**

LOA	286'-0" [87.17m]
LWL	274'-6" [83.66m]
BEAM	60'-0" [18.30m]
DEPTH	24'-6" [7.47m]
DESIGN DRAFT	19'-4" [5.90m]
DECK LOAD RATING (MAIN DECK)	1,024 lb/ft <sup>2</sup> [51/m <sup>2</sup> ]
FRAME SPACING	2'-0" [609.6mm]

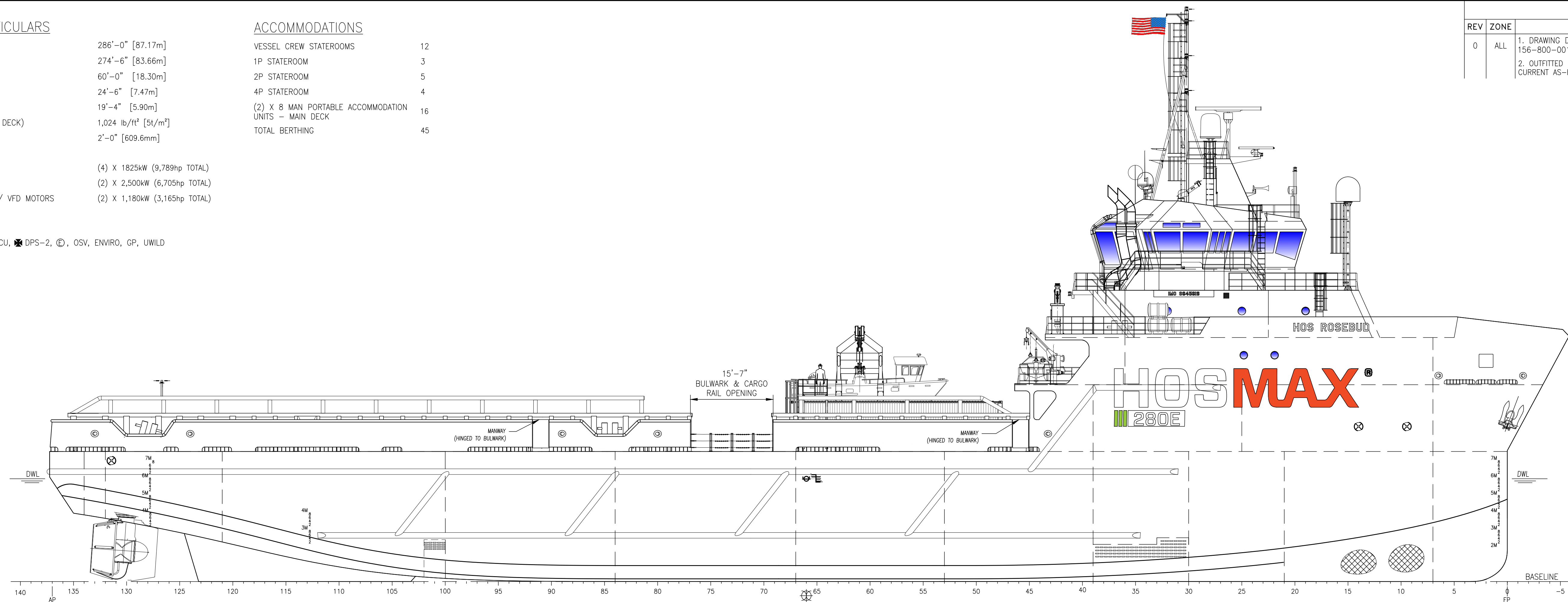
**ACCOMMODATIONS**

VESSEL CREW STATEROOMS	12
1P STATEROOM	3
2P STATEROOM	5
4P STATEROOM	4
(2) X 8 MAN PORTABLE ACCOMMODATION UNITS - MAIN DECK	16
TOTAL BERTHING	45

GENERATORS	(4) X 1825kW (9,789hp TOTAL)
MAIN PROPULSION	(2) X 2,500kW (6,705hp TOTAL)
BOW THRUSTERS - FP W/ VFD MOTORS	(2) X 1,180kW (3,165hp TOTAL)

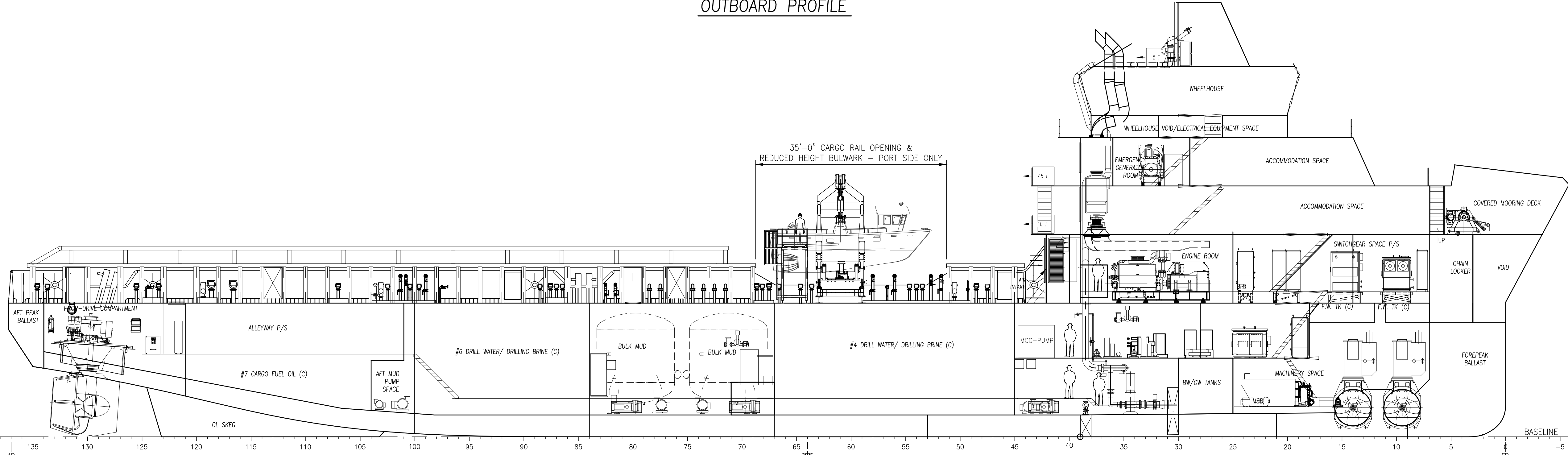
REGULATORY  
 ABS, A1, AMS, ACCU, DPS-2, OSV, ENVIRO, GP, UWILD

REVISIONS				
REV	ZONE	DESCRIPTION	DATE	BY
0	ALL	1. DRAWING DERIVED FROM AND SUPERCEDES ESG 156-800-001 R10, UPDATED TO HOS FORMATTING. 2. OUTFITTED FOR SRDRS OPERATIONS. UPDATED PER CURRENT AS-BUILT CONFIGURATION.	07/26/22	SMM



**OUTBOARD PROFILE**

05 DECK - WHEELHOUSE TOP	67'-10 1/2" [20.69m] ABL
04 DECK - WHEELHOUSE	58'-10 1/2" [17.95m] ABL
03 DECK - WHEELHOUSE VOID	54'-10 1/2" [16.73m] ABL
02 DECK - ACCOMMODATION DECK	45'-11 3/4" [14.02m] ABL
01 DECK - FOCLE DECK	37'-1" [11.30m] ABL
1 DECK - MAIN DECK	24'-6" [7.47m] ABL
2 DECK - MEZZANINE DECK	14'-5" [4.39m] ABL
TANK TOP	4'-0" [1.22m] ABL



**INBOARD PROFILE**

05 DECK - WHEELHOUSE TOP	67'-10 1/2" [20.69m] ABL
04 DECK - WHEELHOUSE	58'-10 1/2" [17.95m] ABL
03 DECK - WHEELHOUSE VOID	54'-10 1/2" [16.73m] ABL
02 DECK - ACCOMMODATION DECK	45'-11 3/4" [14.02m] ABL
01 DECK - FOCLE DECK	37'-1" [11.30m] ABL
1 DECK - MAIN DECK	24'-6" [7.47m] ABL
2 DECK - MEZZANINE DECK	14'-5" [4.39m] ABL
TANK TOP	4'-0" [1.22m] ABL

**HOSMAX 280E / HOS ROSEBUD**

THIS DRAWING, DESIGN CONCEPT AND SPECIFICATIONS ARE THE PROPERTY OF HORNBECK OFFSHORE SERVICES AND ARE FURNISHED ON A CONFIDENTIAL BASIS WITH AN EXPRESSED UNDERSTANDING THAT THEY WILL NOT BE COPIED IN ANY MANNER USED FOR MANUFACTURE, SOLD, TRANSFERRED, NOR USED TO THE DETRIMENT OF SAID FIRM WITHOUT WRITTEN PERMISSION. HOS ©  
 HORNBECK OFFSHORE SERVICES

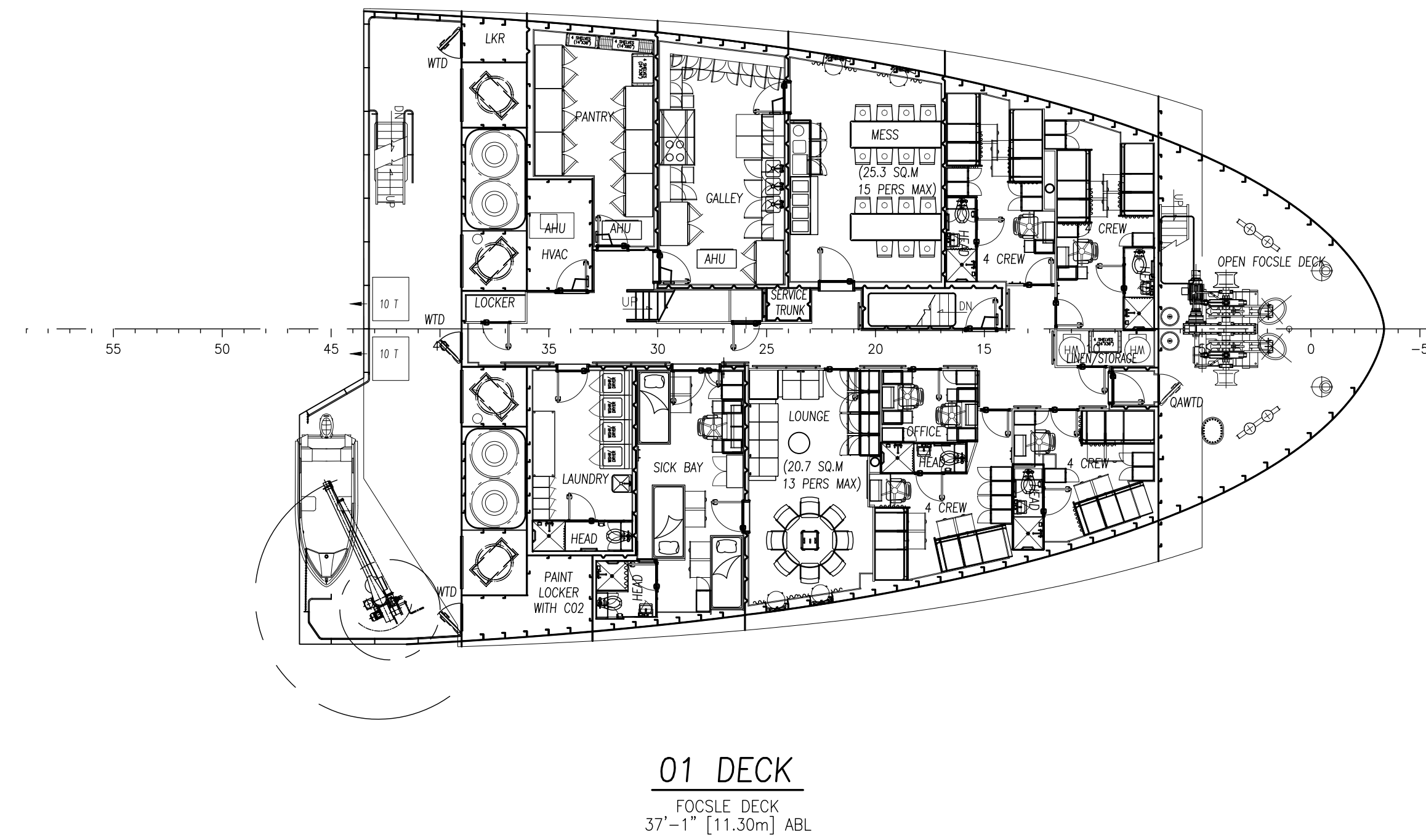
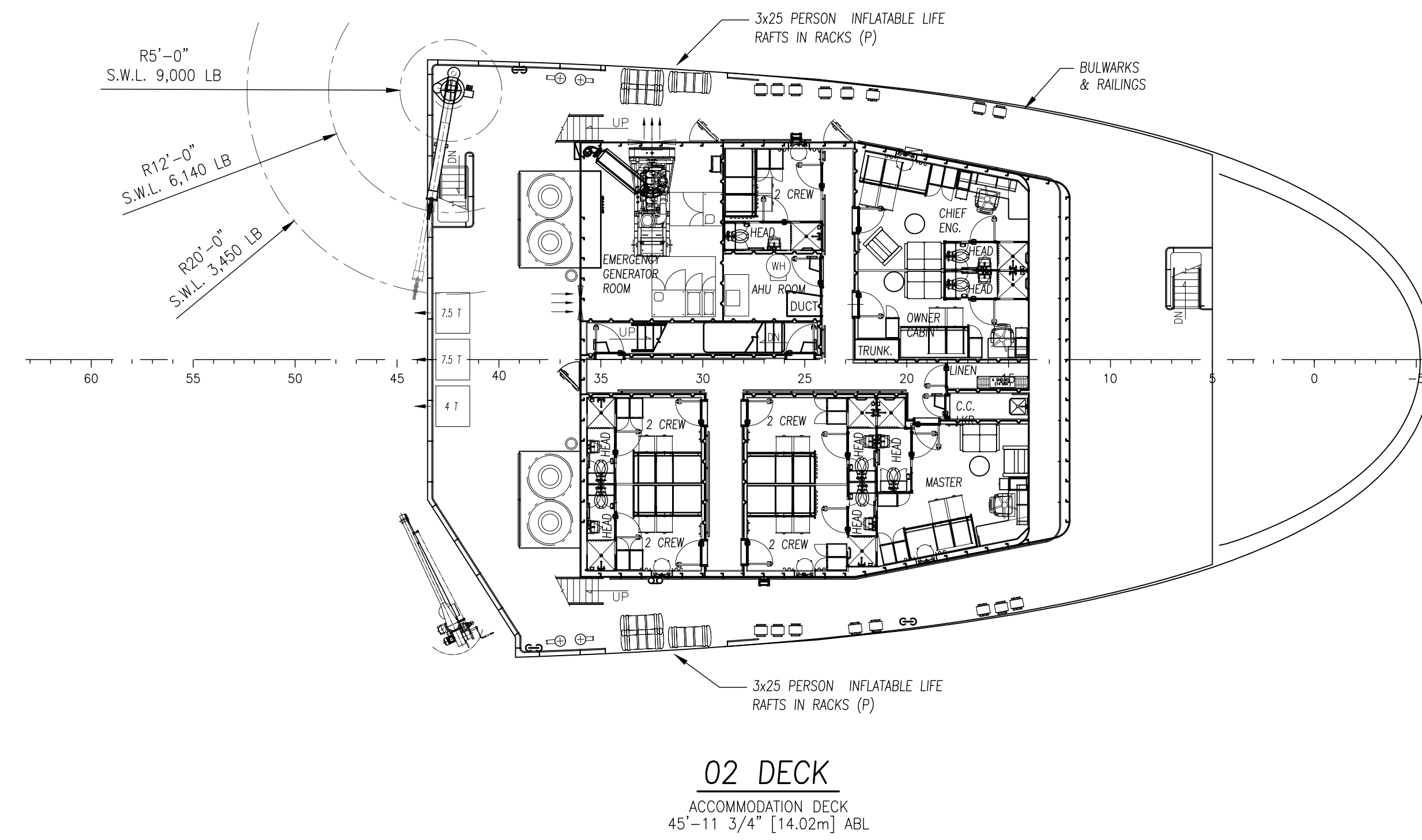
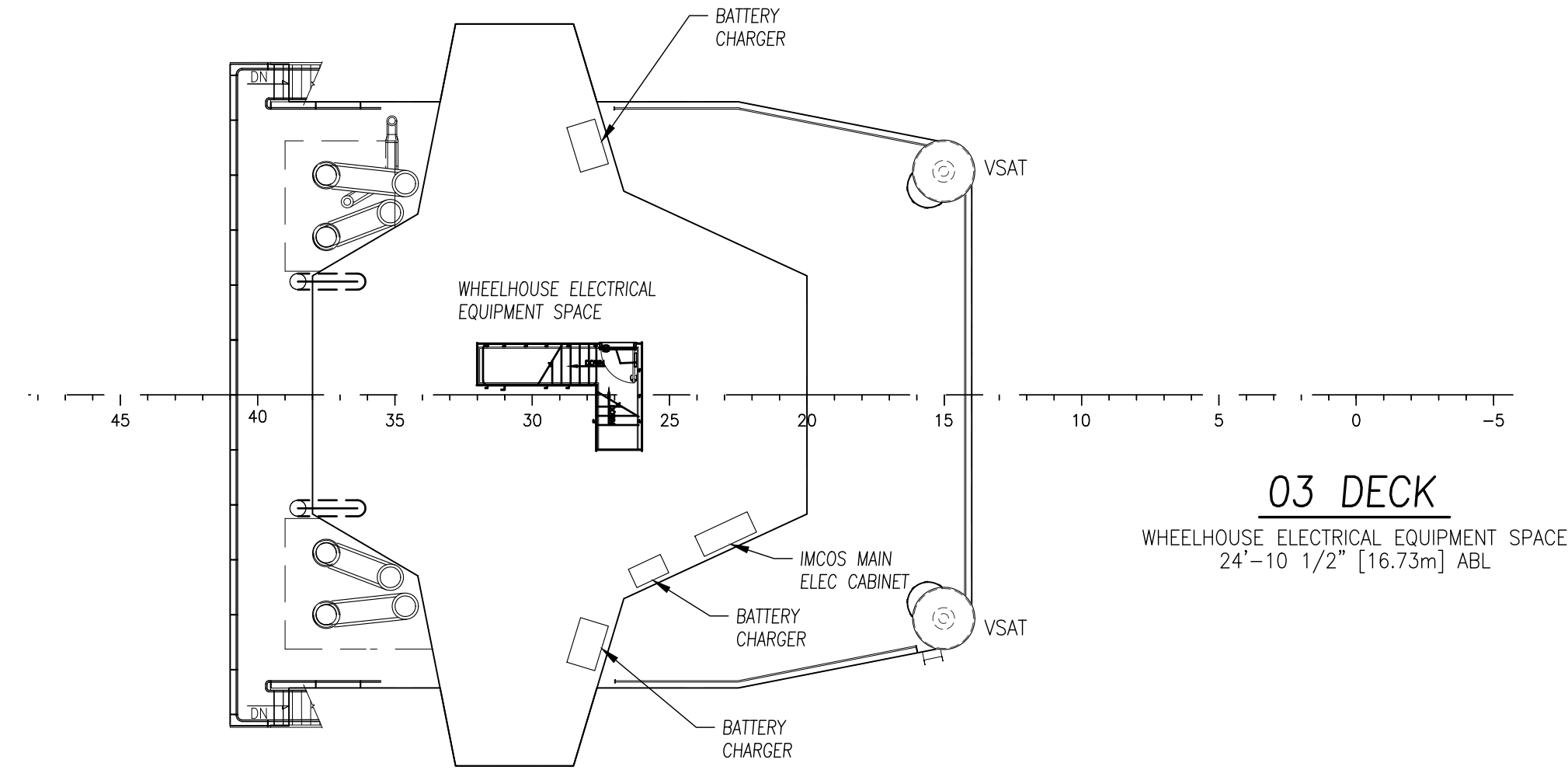
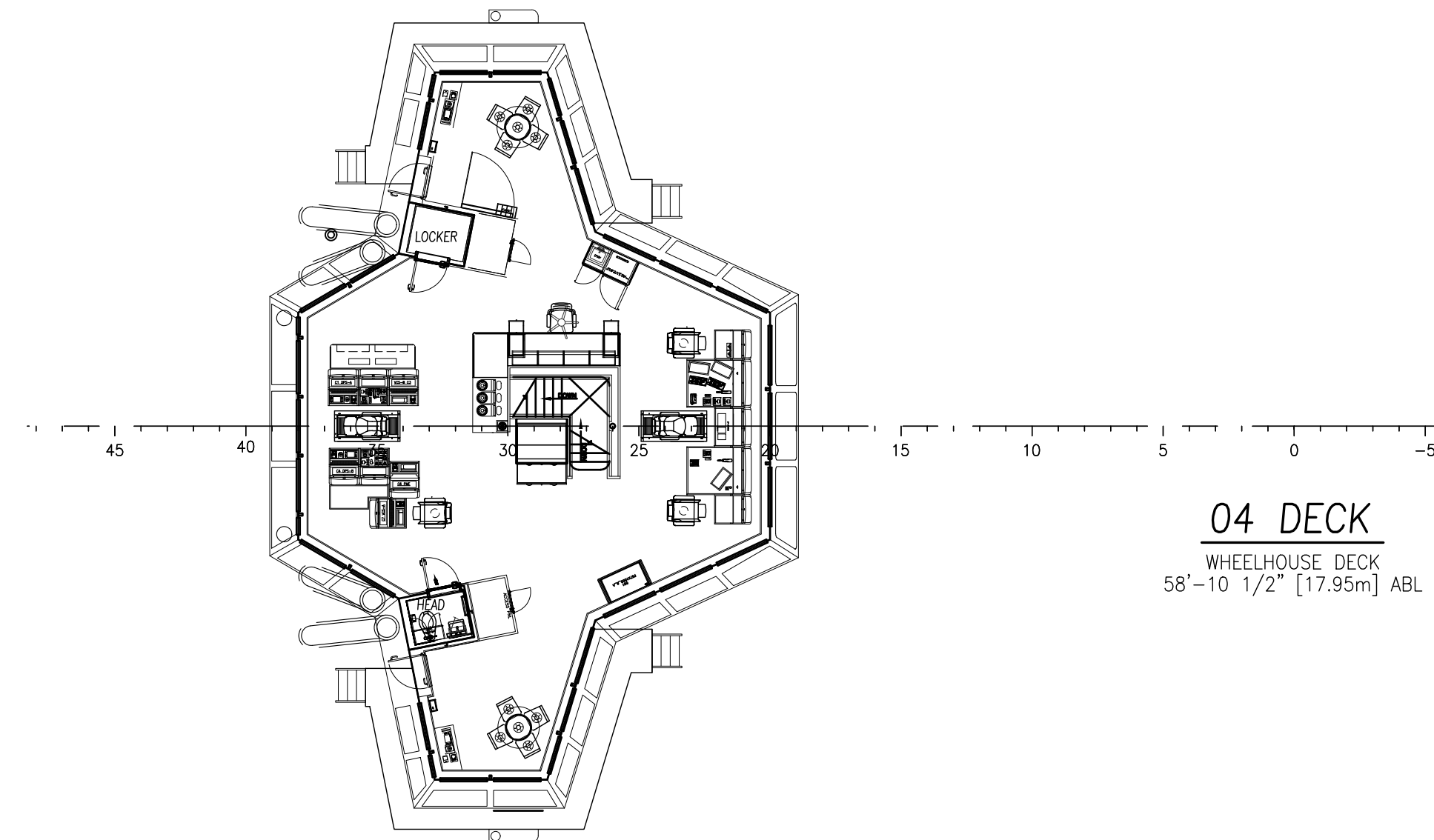
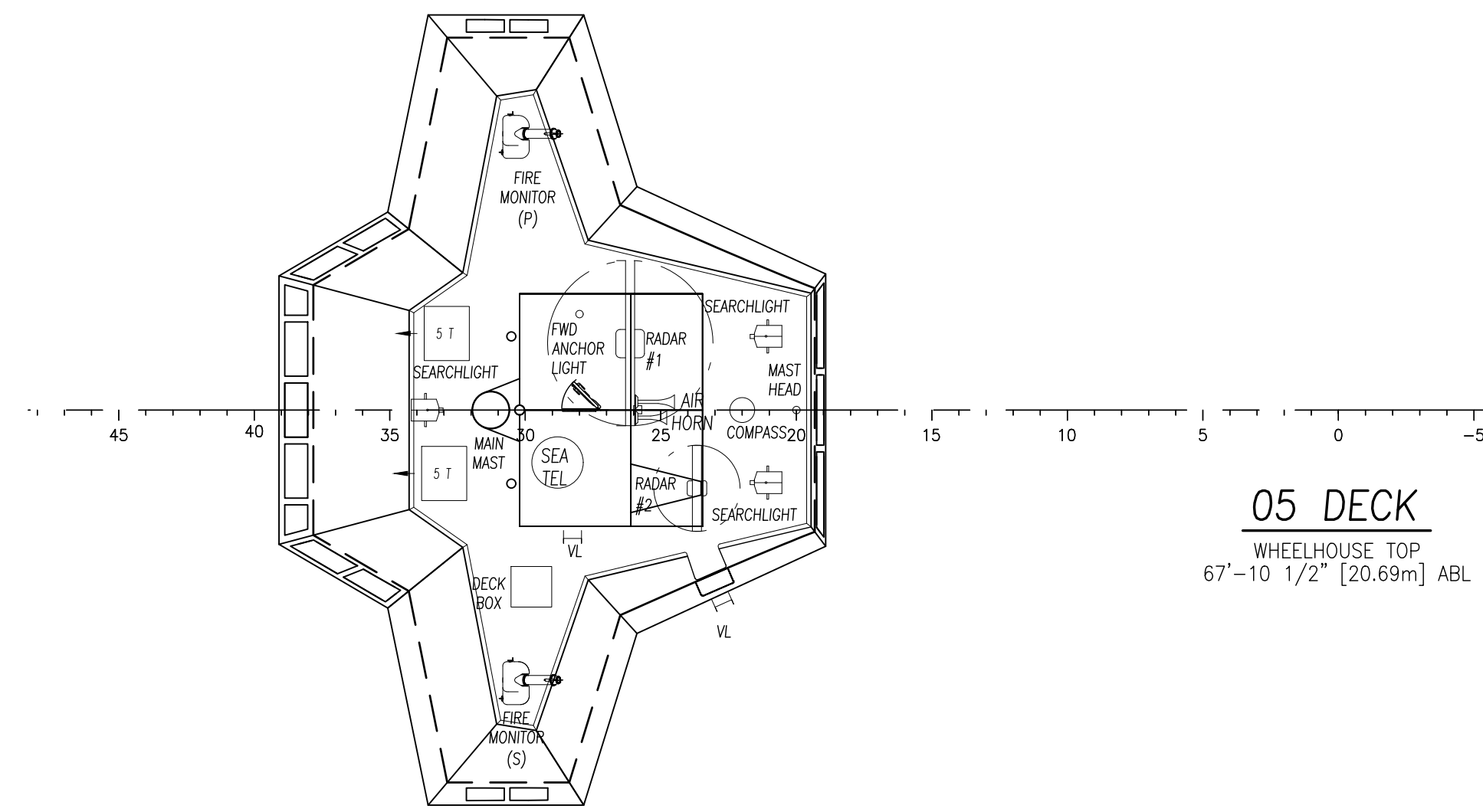
DRAWN BY: S. MAUL  
 286'-0" X 60'-0" X 24'-6"

CHECKED BY: M. STANSBURY  
 APPROVED BY: J. GUIDRY  
**OUTBOARD PROFILE & GENERAL ARRANGEMENT**

NO.	TITLE	DRAWING NUMBER
1	GENERAL ARRANGEMENT (ESG)	156-800-001 R10

REFERENCES			
TASK No.	DRAWING No.	SCALE: 3/32"=1'-0"	REV.
7629	1,001	DATE: 03/10/22	0
HULL No. 155	SY: ESG	SHEET 1 OF 5	

LAST SAVE/PRINT: 8/25/2022 2:35 PM  
 INC. MAUL  
 SHEET: AMB 0 2254



THIS DRAWING, DESIGN CONCEPT AND SPECIFICATIONS ARE THE PROPERTY OF HORNBECK OFFSHORE SERVICES AND ARE FURNISHED ON A CONFIDENTIAL BASIS WITH AN EXPRESSED UNDERSTANDING THAT THEY WILL NOT BE COPIED IN ANY MANNER USED FOR MANUFACTURE, SALE, TRANSFER, NOR USED TO THE DETRIMENT OF SAID FIRM WITHOUT WRITTEN PERMISSION.

**HORNBECK OFFSHORE SERVICES**

OUTBOARD PROFILE & GENERAL ARRANGEMENT			SIZE
TASK No. 7629	DRAWING No. 1.001	SCALE: 3/32"=1'-0"	D
HULL No. 155	SY: ESG	DATE: 03/10/22	REV.
		SHEET 2 OF 5	0

24

23

22

21

20

19

18

17

D

D

C

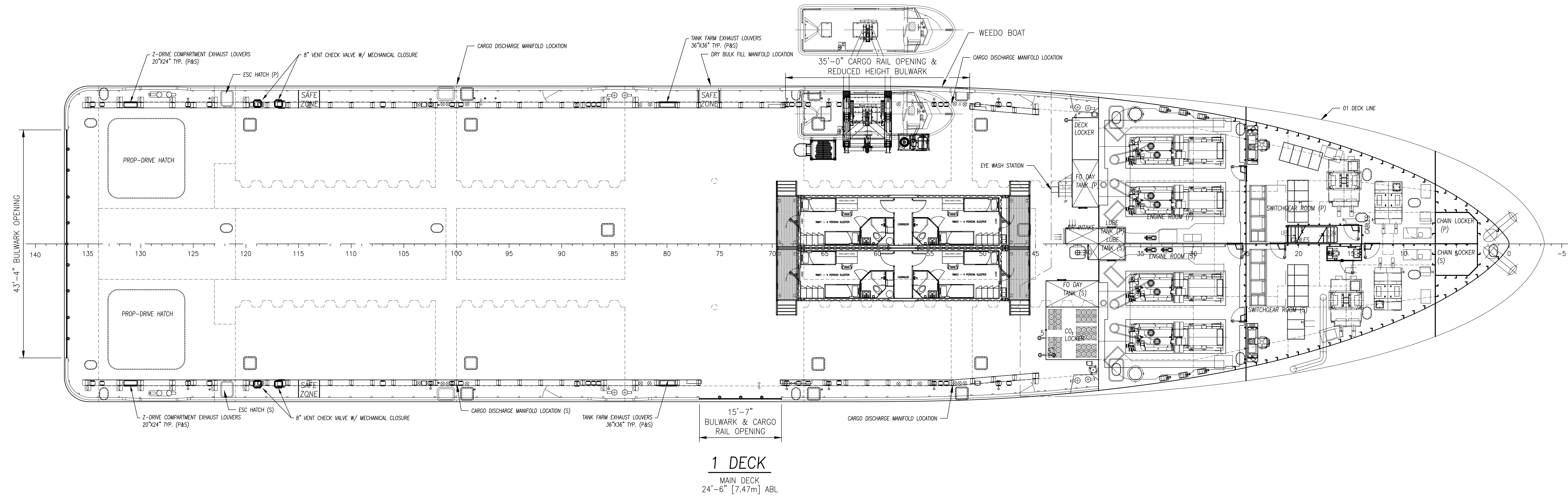
C

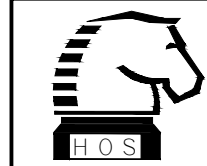
B

B

A

A



 <p>THIS DRAWING, DESIGN CONCEPT AND SPECIFICATIONS ARE THE PROPERTY OF HORNBECK OFFSHORE SERVICES AND ARE FURNISHED ON A CONFIDENTIAL BASIS WITH AN EXPRESSED UNDERSTANDING THAT THEY WILL NOT BE COPIED IN ANY MANNER USED FOR MANUFACTURE, SOLD, TRANSFERRED, NOR USED TO THE DETRIMENT OF SAID FIRM WITHOUT WRITTEN PERMISSION.</p>	<b>OUTBOARD PROFILE &amp; GENERAL ARRANGEMENT</b>			SIZE D
	TASK No. 7629	DRAWING No. 1.001	SCALE: 3/32"=1'-0"	REV. 0
HULL No. 155	SY: ESG	DATE: 03/10/22	SHEET 3 OF 5	

HORNBECK OFFSHORE SERVICES

24

23

22

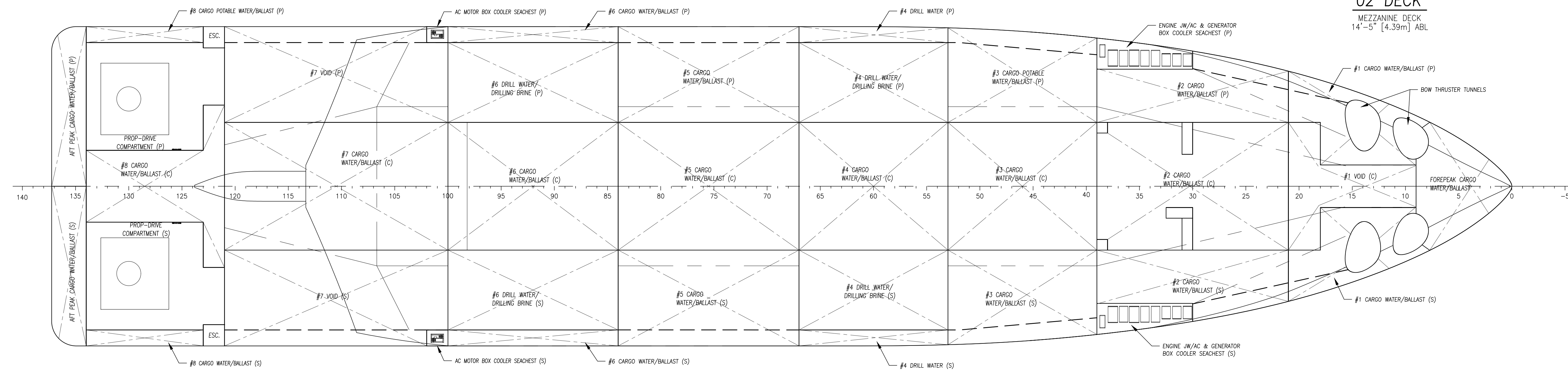
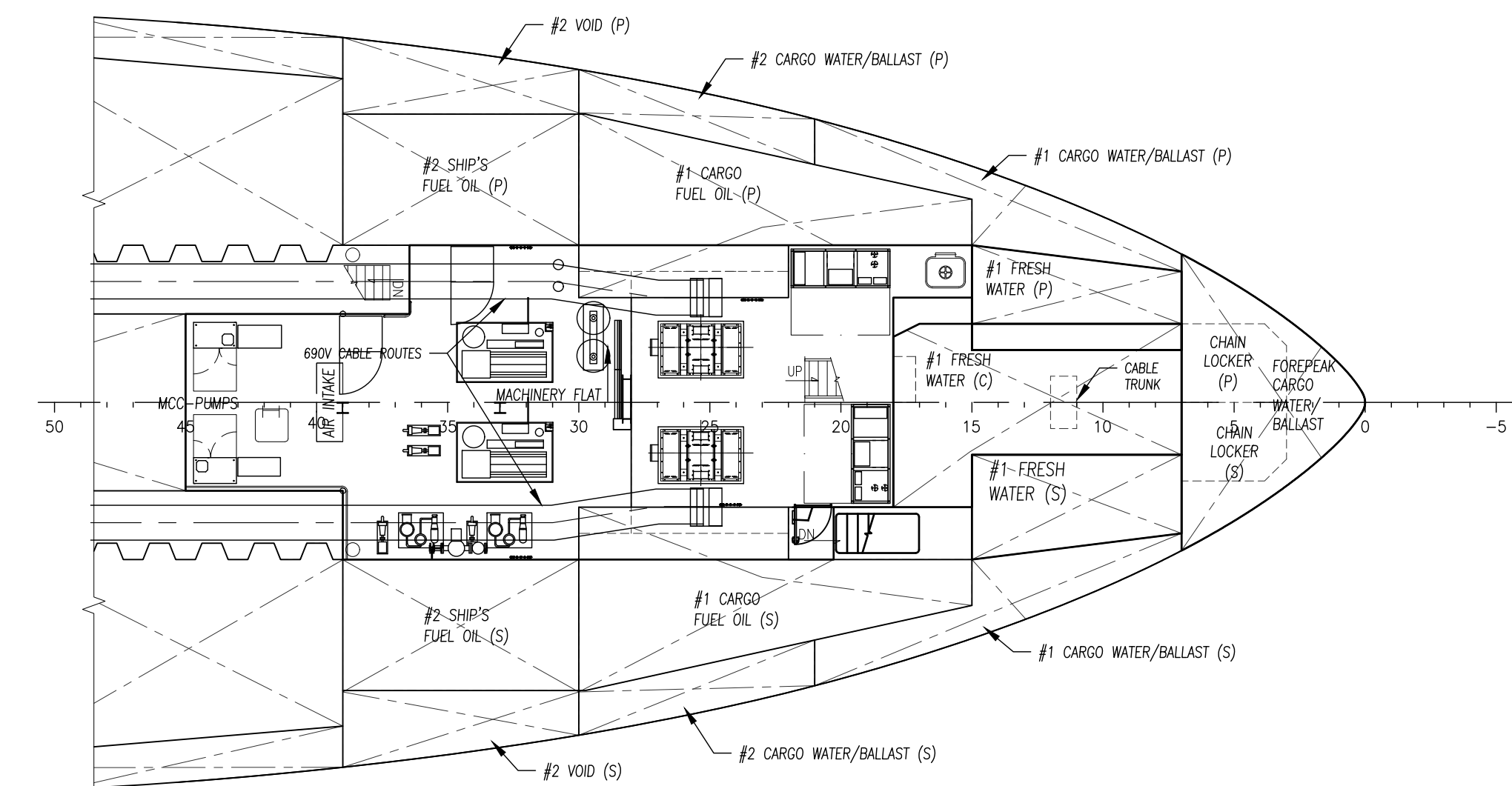
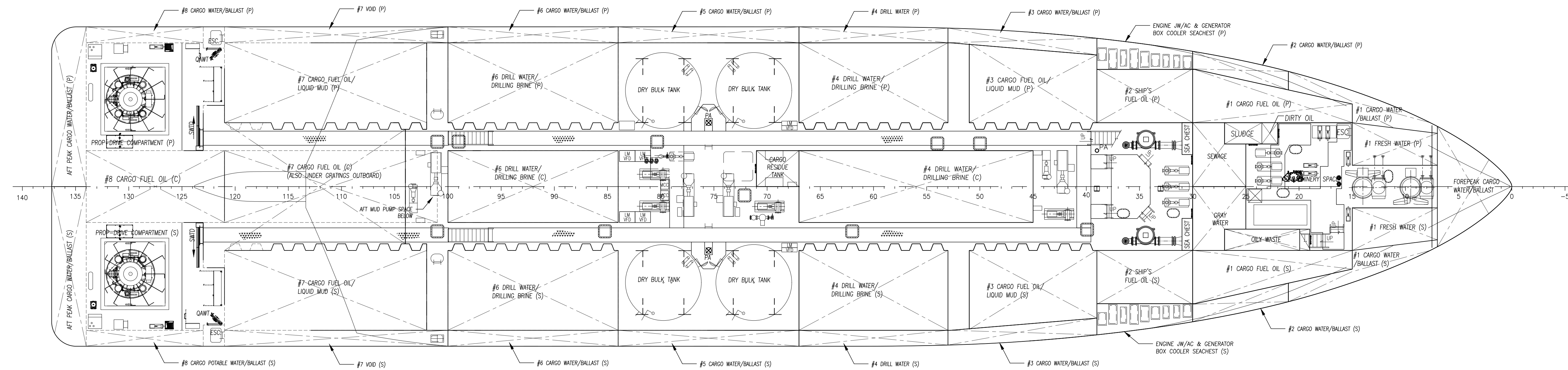
21

20

19

18

17



<p>HORNBECK OFFSHORE SERVICES</p>	<p>THIS DRAWING, DESIGN CONCEPT AND SPECIFICATIONS ARE THE PROPERTY OF HORNBECK OFFSHORE SERVICES AND ARE FURNISHED ON A CONFIDENTIAL BASIS WITH AN EXPRESSED UNDERSTANDING THAT THEY WILL NOT BE COPIED IN ANY MANNER USED FOR MANUFACTURE, SALE, TRANSFERRED, NOR USED TO THE DETRIMENT OF SAID FIRM WITHOUT WRITTEN PERMISSION. HOS ©</p>			<p>OUTBOARD PROFILE &amp; GENERAL ARRANGEMENT</p>	<p>SIZE D</p>
	<p>TASK No. 7629</p>	<p>DRAWING No. 1.001</p>	<p>SCALE: 3/32"=1'-0"</p>	<p>REV. 0</p>	
	<p>HULL No. 155</p>	<p>SY: ESG</p>	<p>DATE: 03/10/22</p>	<p>SHEET 4 OF 5</p>	
	<p>REV. 0</p>				

40

39

38

37

36

35

34

33

D

C

B

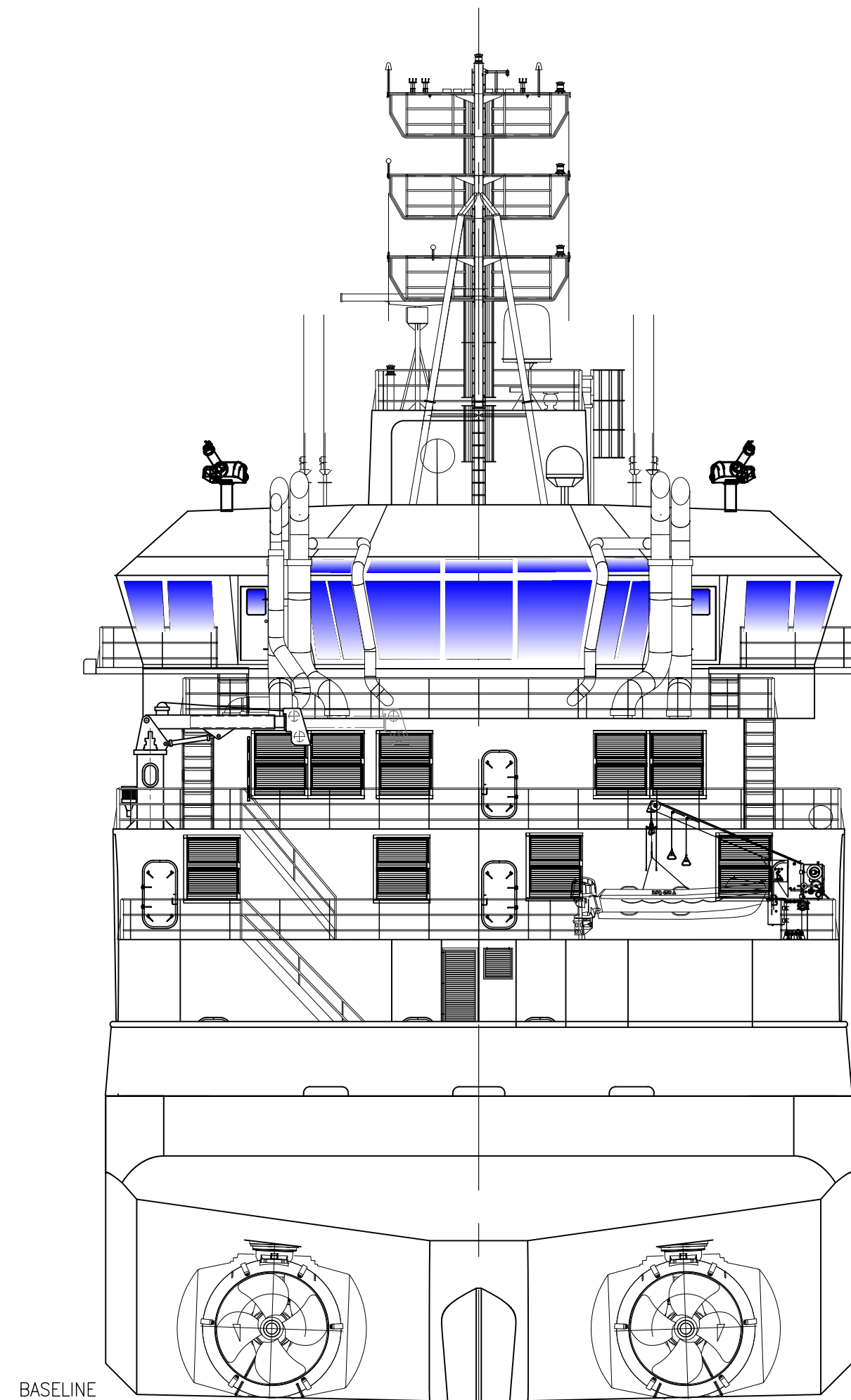
A

D

C

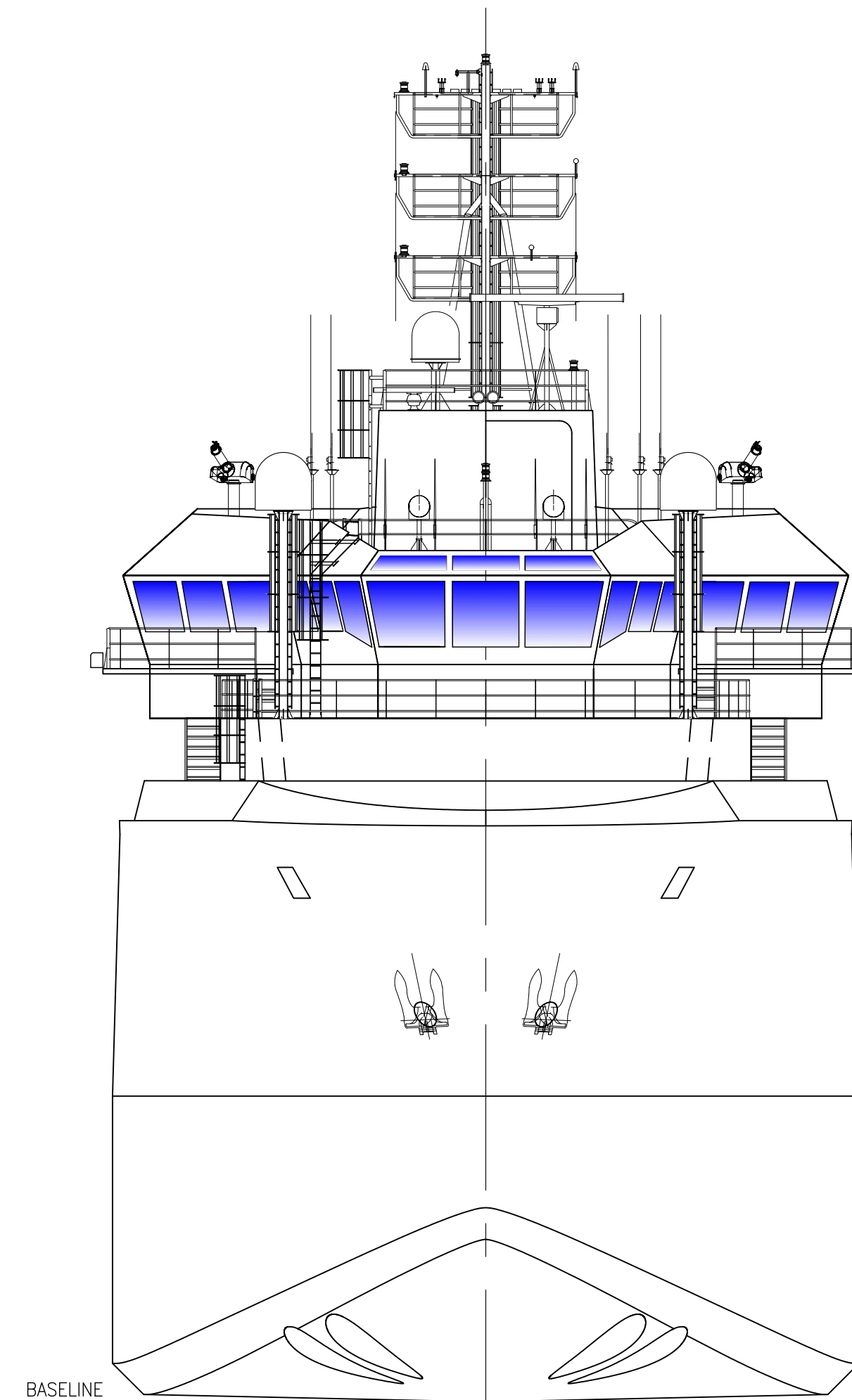
B

A




**STERN VIEW**  
LOOKING FWD

- 05 DECK - WHEELHOUSE TOP  
67'-10 1/2" [20.69m] ABL
- 04 DECK - WHEELHOUSE  
58'-10 1/2" [17.95m] ABL
- 03 DECK - WHEELHOUSE VOID  
54'-10 1/2" [16.73m] ABL
- 02 DECK - ACCOMMODATION DECK  
45'-11 3/4" [14.02m] ABL
- 01 DECK - FOCsLE DECK  
37'-1" [11.30m] ABL
- 1 DECK - MAIN DECK  
24'-6" [7.47m] ABL
- 2 DECK - MEZZANINE DECK  
14'-5" [4.39m] ABL
- TANK TOP  
4'-0" [1.22m] ABL



**BOW VIEW**  
LOOKING AFT

- 05 DECK - WHEELHOUSE TOP  
67'-10 1/2" [20.69m] ABL
- 04 DECK - WHEELHOUSE  
58'-10 1/2" [17.95m] ABL
- 03 DECK - WHEELHOUSE VOID  
54'-10 1/2" [16.73m] ABL
- 02 DECK - ACCOMMODATION DECK  
45'-11 3/4" [14.02m] ABL
- 01 DECK - FOCsLE DECK  
37'-1" [11.30m] ABL
- 1 DECK - MAIN DECK  
24'-6" [7.47m] ABL
- 2 DECK - MEZZANINE DECK  
14'-5" [4.39m] ABL
- TANK TOP  
4'-0" [1.22m] ABL

	<small>THIS DRAWING, DESIGN CONCEPT AND SPECIFICATIONS ARE THE PROPERTY OF HORNBECK OFFSHORE SERVICES AND ARE FURNISHED ON A CONFIDENTIAL BASIS WITH AN EXPRESSED UNDERSTANDING THAT THEY WILL NOT BE COPIED IN ANY MANNER USED FOR MANUFACTURE, SALE, TRANSFERRED, NOR USED TO THE DETRIMENT OF SAID FIRM WITHOUT WRITTEN PERMISSION.</small>			<b>OUTBOARD PROFILE &amp; GENERAL ARRANGEMENT</b>	SIZE
	TASK No. 7629	DRAWING No. 1.001	SCALE: 3/32"=1'-0" DATE: 03/10/22		REV.
HORNBECK OFFSHORE SERVICES			HULL No. 155 SY: ESG	SHEET 5 OF 5	0

40

39

38

37

36

35

34

33