

**PRINCIPAL PARTICULARS**

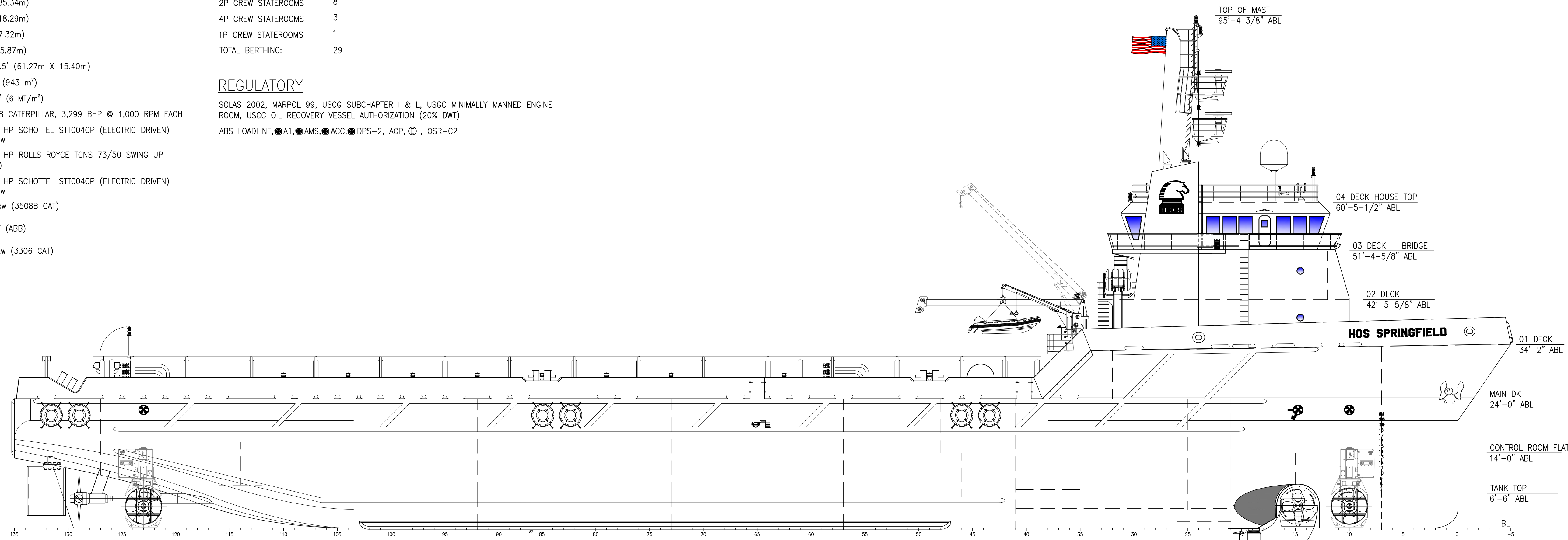
LOA	280'-0" (85.34m)
BREADTH	60'-0" (18.29m)
DEPTH	24'-0" (7.32m)
DRAFT (LOADLINE)	19.25' (5.87m)
CLEAR DECK CARGO SPACE	201' X 50.5' (61.27m X 15.40m)
CLEAR DECK CARGO AREA	10,151 ft <sup>2</sup> (943 m <sup>2</sup> )
CARGO DECK RATING	1,200 lb/ft <sup>2</sup> (6 MT/m <sup>2</sup> )
MAIN PROPULSION	(2) X 3608 CATERPILLAR, 3,299 BHP @ 1,000 RPM EACH
BOW THRUSTER-TUNNEL	1 X 1,700 HP SCHOTTEL STT004CP (ELECTRIC DRIVEN) 1,267.52 kw
BOW THRUSTER-SWING	1 X 1,100 HP ROLLS ROYCE TCNS 73/50 SWING UP (3508 CAT)
STERN THRUSTER-TUNNEL	1 X 1,700 HP SCHOTTEL STT004CP (ELECTRIC DRIVEN) 1,267.52 kw
SHIPS SERVICE DIESEL GENERATOR	2 X 910 kw (3508B CAT)
SHAFT GENERATOR FOR ELECTRIC THRUSTERS	2 X 2 mW (ABB)
EMERGENCY DIESEL GENERATOR	1 X 170 kw (3306 CAT)

**ACCOMMODATIONS**

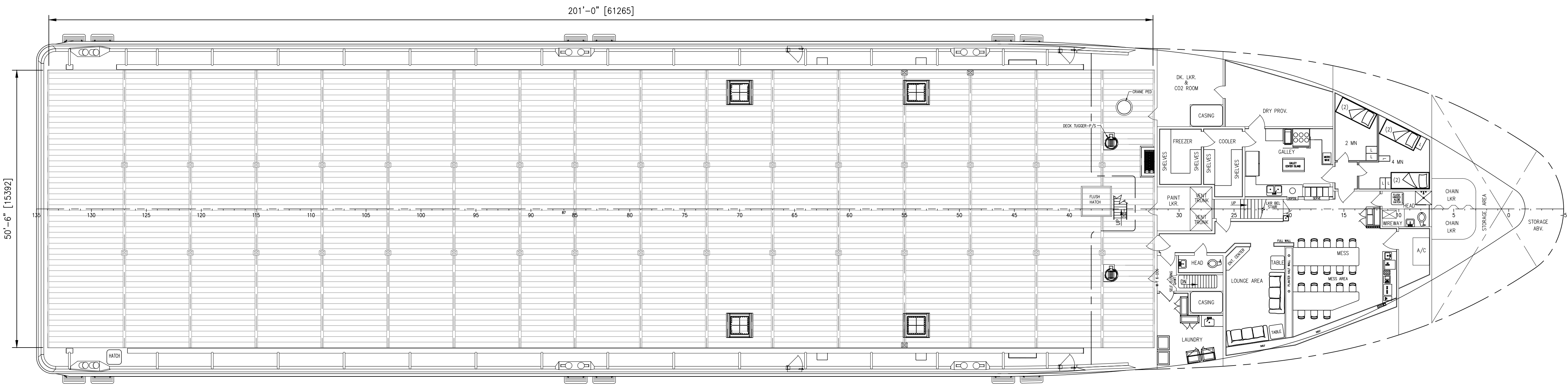
2P CREW STATEROOMS	8
4P CREW STATEROOMS	3
1P CREW STATEROOMS	1
TOTAL BERTHING:	29

**REGULATORY**

SOLAS 2002, MARPOL 99, USCG SUBCHAPTER 1 & L, USCG MINIMALLY MANNED ENGINE ROOM, USCG OIL RECOVERY VESSEL AUTHORIZATION (20% DWT)  
ABS LOADLINE, A1, AMS, ACC, DPS-2, ACP, OSR-C2



**OUTBOARD PROFILE**



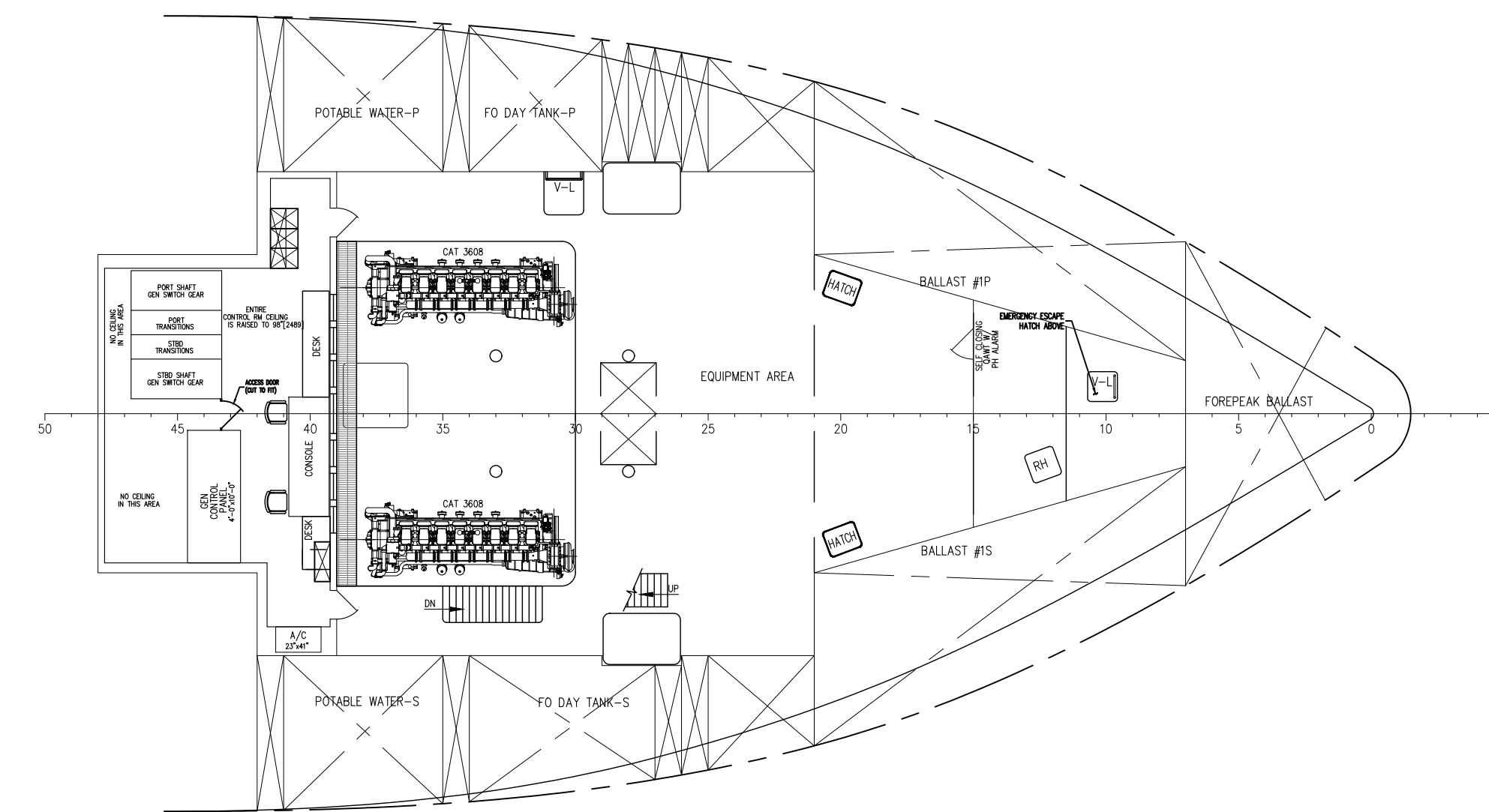
**MAIN DECK PLAN**  
24'-0" ABL

**HOSMAX 280 / HOS SPRINGFIELD**

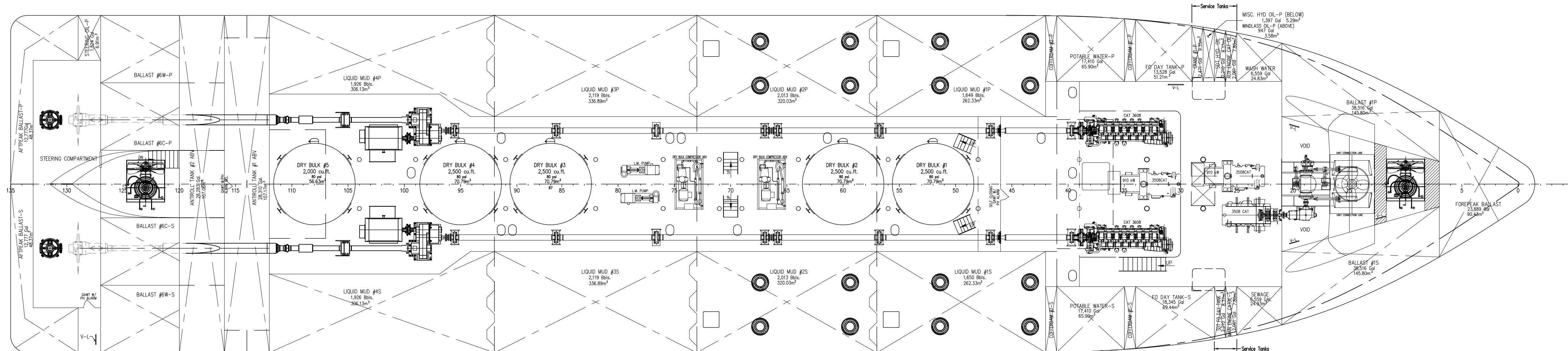
THIS DRAWING, DESIGN CONCEPT AND SPECIFICATIONS ARE THE PROPERTY OF HORNBECK OFFSHORE SERVICES AND ARE FURNISHED ON A CONFIDENTIAL BASIS WITH AN EXPRESSED UNDERSTANDING THAT THEY WILL NOT BE COPIED IN ANY MANNER USED FOR MANUFACTURE, SOLD, TRANSFERRED, NOR USED TO THE DETRIMENT OF SAID FIRM WITHOUT WRITTEN PERMISSION. HOS ©  
HORNBECK OFFSHORE SERVICES

DRAWN BY:	S. MAUL	280'-0" X 60'-0" X 24'-0"		SIZE	D
CHECKED BY:	M. STANSBURY	OUTBOARD PROFILE & GENERAL ARRANGEMENT		REV.	1
APPROVED BY:	J. GUIDRY	TASK No. 7582	DRAWING No. 1,001	SCALE: 3/32"=1'-0"	DATE: 03/07/22
		HULL No. 225	SY: NAS	SHEET 1 OF 3	

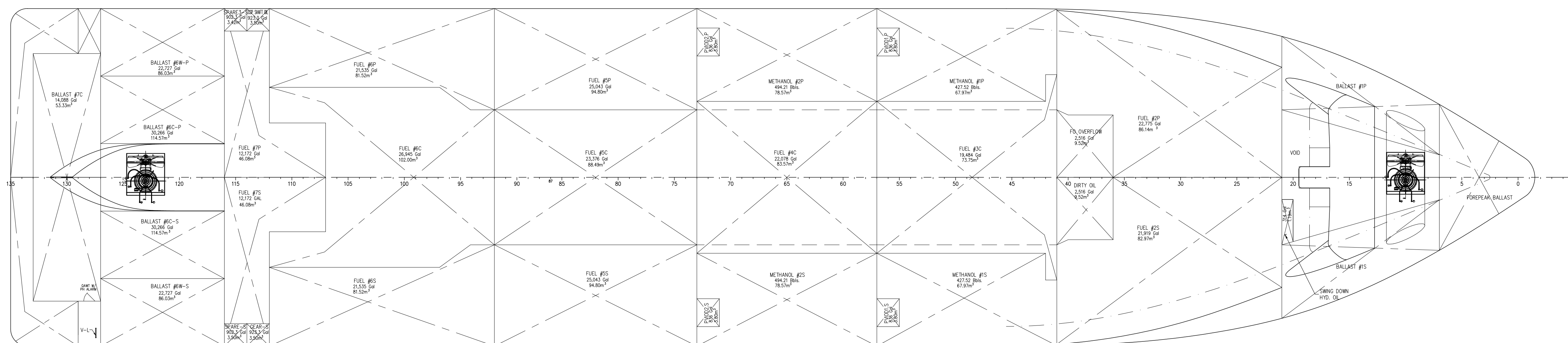
FILE: 12/20/2022 7:33 AM  
DWG: JSALVA  
SHEET: AMB 0 2254



**CONTROL ROOM FLAT**  
14'-0" ABL



**ABOVE TANK TOP PLAN**



**TANK TOP**

THIS DRAWING, DESIGN CONCEPT AND SPECIFICATIONS ARE THE PROPERTY OF HORNBECK OFFSHORE SERVICES AND ARE FURNISHED ON A CONFIDENTIAL BASIS WITH AN EXPRESSED UNDERSTANDING THAT THEY WILL NOT BE COPIED IN ANY MANNER USED FOR MANUFACTURE, SALE, TRANSFER, OR REUSE TO THE DETRIMENT OF SAID FIRM WITHOUT WRITTEN PERMISSION. HOS

**HORNBECK OFFSHORE SERVICES**

OUTBOARD PROFILE & GENERAL ARRANGEMENT		SIZE D
TASK No. 7582	DRAWING No. 1.001	REV. 1
HULL No. 225	SY: NAS	DATE: 03/07/22
		SHEET 2 OF 3

24

23

22

21

20

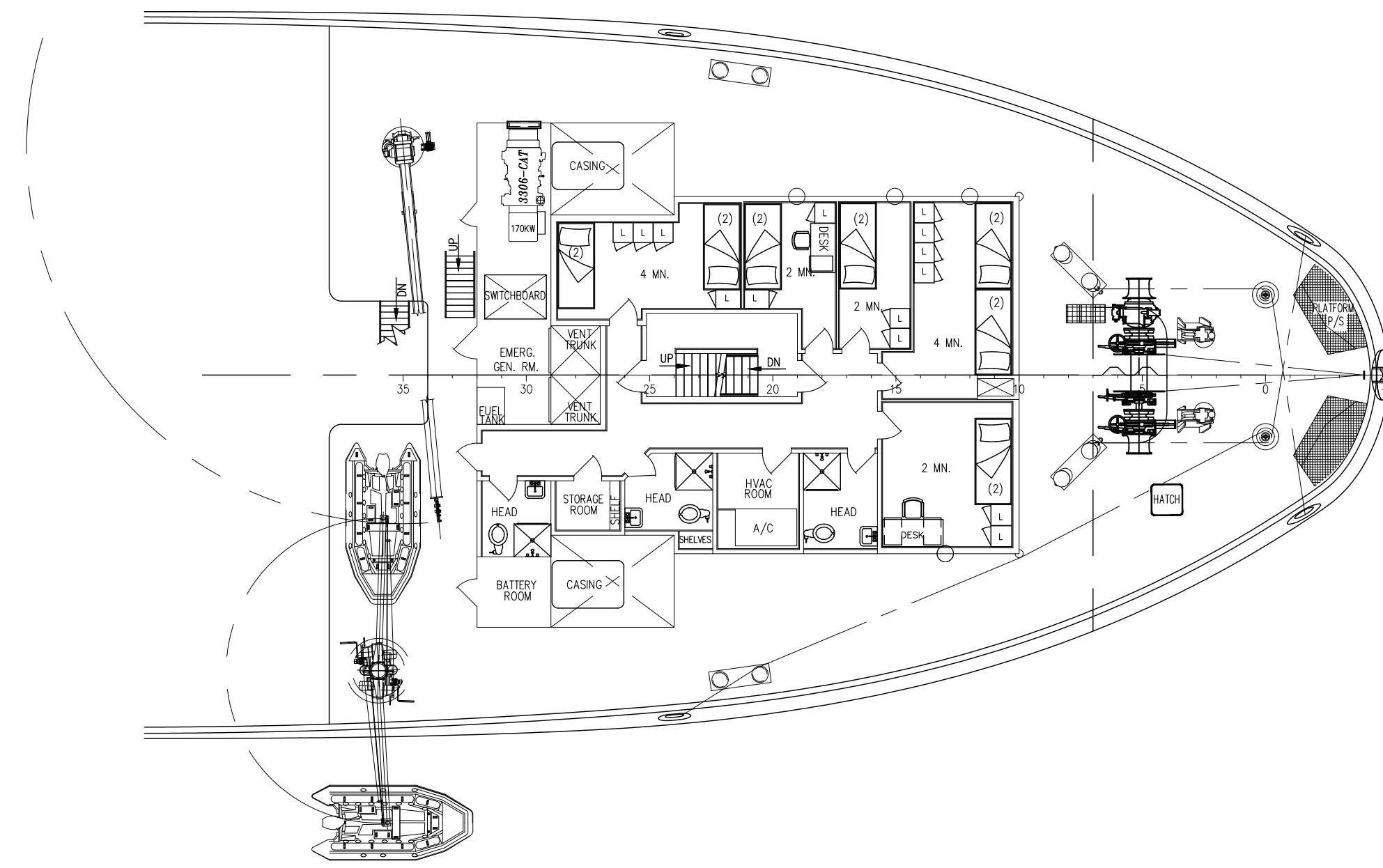
19

18

17

D

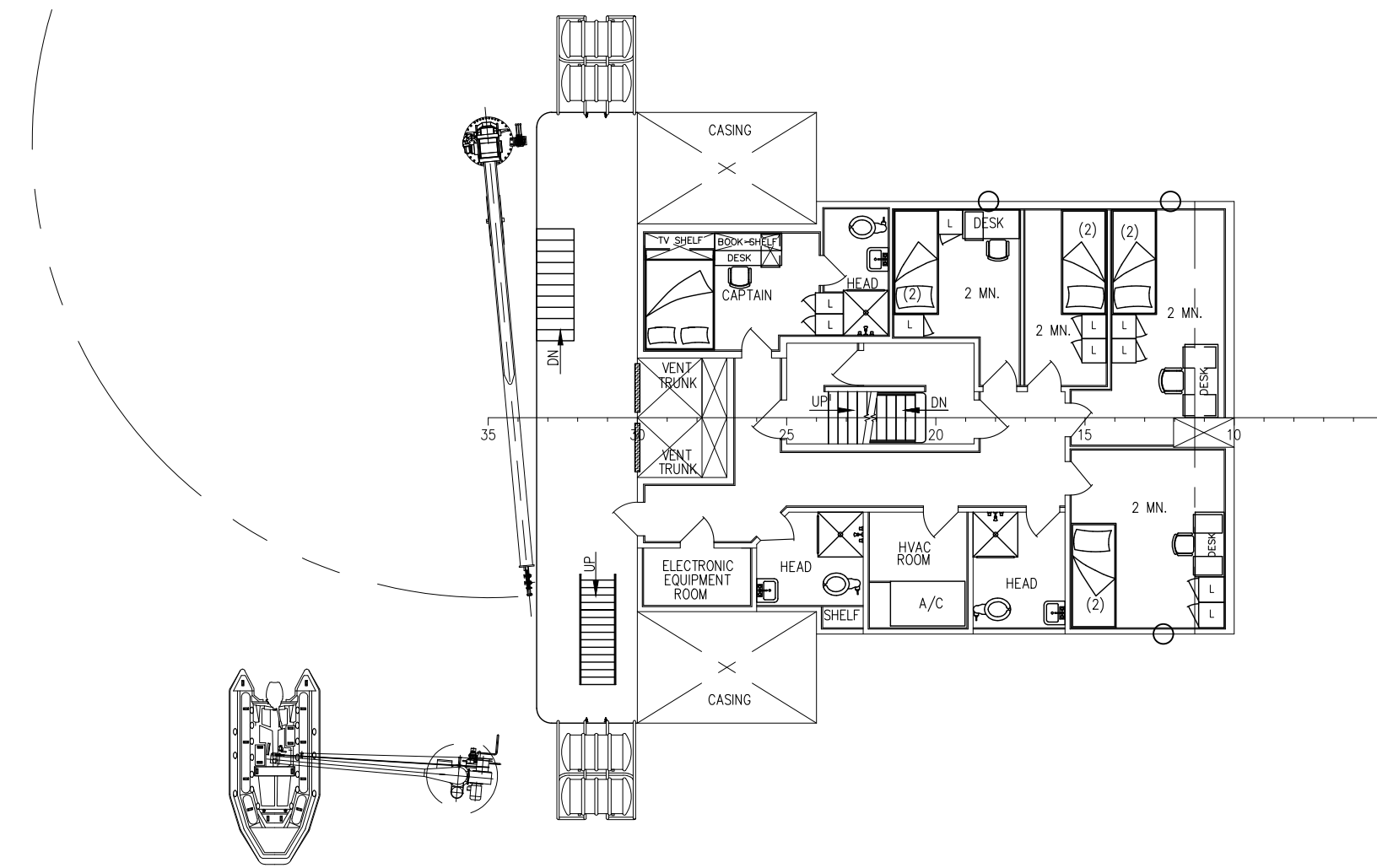
D



**01 DECK PLAN**  
34'-2" ABL (⊙ FR5)

C

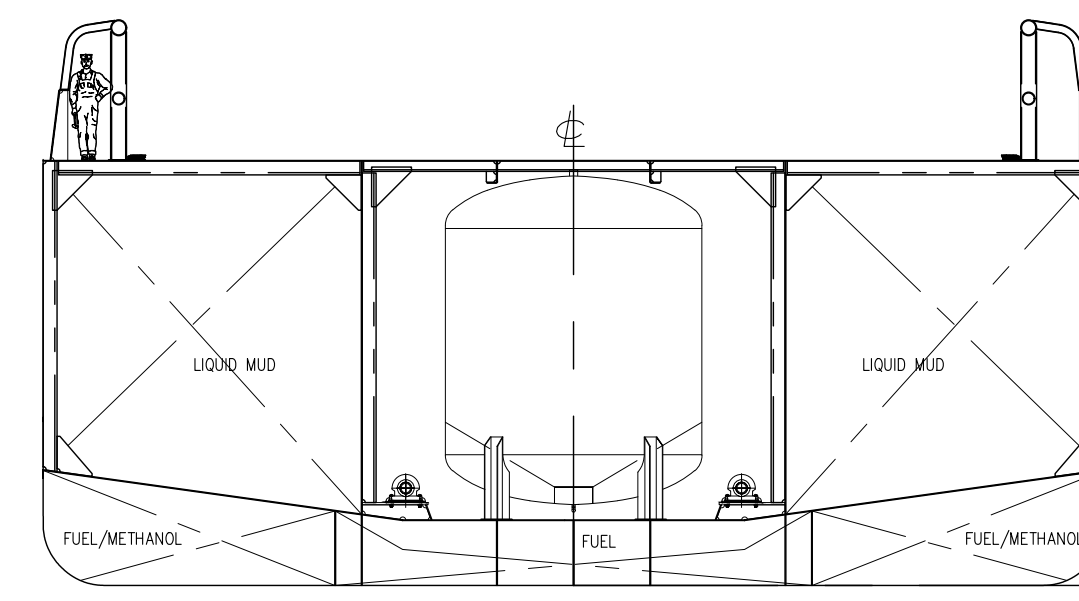
C



**02 DECK PLAN**  
42'-5 5/8" ABL

B

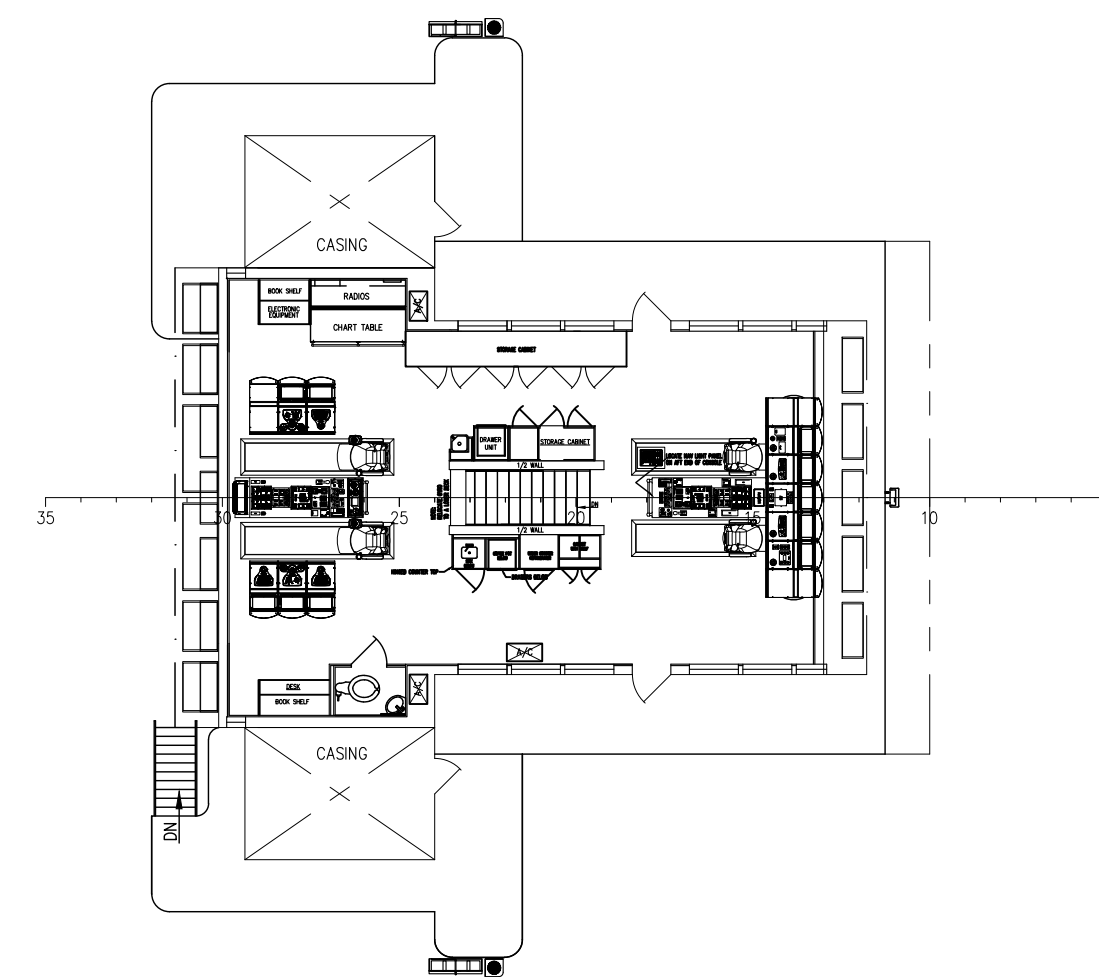
B



**CARGO AREA SECTION**  
APPROX. FR85

A

A



**03 DECK PLAN**  
BRIDGE - 51'-4 5/8" ABL

24

23

22

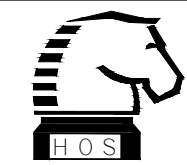
21

20

19

18

17

 <p>THIS DRAWING, DESIGN CONCEPT AND SPECIFICATIONS ARE THE PROPERTY OF HORNBECK OFFSHORE SERVICES AND ARE FURNISHED ON A CONFIDENTIAL BASIS WITH AN EXPRESSED UNDERSTANDING THAT THEY WILL NOT BE COPIED IN ANY MANNER USED FOR MANUFACTURING, SOLD, TRANSFERRED, NOR USED TO THE DETRIMENT OF SAID FIRM WITHOUT WRITTEN PERMISSION.</p> <p><b>HORNBECK OFFSHORE SERVICES</b></p>	<b>OUTBOARD PROFILE &amp; GENERAL ARRANGEMENT</b>		SIZE <b>D</b>
	TASK No. <b>7582</b>	DRAWING No. <b>1.001</b>	SCALE: 3/32"=1'-0"
	HULL No. Z25	SY: NAS	DATE: 03/07/22 SHEET 3 OF 3

REV.

1